



CHAMBER SAN MATEO COUNTY PROGRESS SEMINAR

BUSINESS • GOVERNMENT • LABOR • EDUCATION

Hyatt Regency Sonoma Wine Country
April 17-19, 2026



Printed Program Sponsors





Envisioning a World Without Waste

Recology isn't just adapting to a sustainable future—we're actively shaping it.



[recology.com/
sustainability](https://recology.com/sustainability)



Welcome to the Progress Seminar!

We are proud to mark the 57th year of this longstanding program, which brings together the region's thought leaders and decision-makers to address enduring community challenges and explore new opportunities. Each year, the Progress Seminar convenes a dynamic group of nearly 300 participants representing business, government, labor, nonprofit, and education from across San Mateo County and beyond.

Our planning team has worked thoughtfully to develop an agenda focused on timely and impactful issues that call for meaningful community dialogue. This year, you'll engage in discussions on topics such as strengthening trust in democratic institutions, sustaining San Mateo County's leadership in biotechnology, fostering regional collaboration, navigating the integration of artificial intelligence, and expanding housing and strengthening our transportation systems – all in support of San Mateo County's long-term prosperity.

The Progress Seminar is unique in its ability to bring people together in a constructive forum that inspires collective action and shared progress. Our goal is for every attendee to leave with fresh perspectives, valuable connections, and renewed energy to fuel stronger partnerships, more effective public policy and a culture grounded in listening, understanding, collaboration and action.

As the Peninsula continues to evolve across economic, social and environmental dimensions, Chamber San Mateo County remains committed to helping shape a thriving future. Through the Progress Seminar and other initiatives, we embrace this responsibility with focus, collaboration and a commitment to meaningful outcomes.

We hope you find the 2026 Progress Seminar engaging, insightful, and supportive in your leadership journey. Please don't hesitate to let us know how we can make your experience even more valuable.



Rosanne Foust

Progress Seminar Co-Chair
President & CEO, San Mateo County
Economic Development Association



Julie Lind

Progress Seminar Co-Chair
Executive Officer & Executive Secretary/
Treasurer, San Mateo County Central
Labor Council



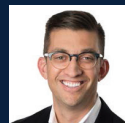
Nicole Taylor

Progress Seminar Co-Chair
President & CEO, Silicon Valley
Community Foundation



Mike Callagy

Progress Seminar Co-Chair
County Executive Officer, County of San Mateo



Aaron Aknin

Chair of the Board, Chamber San Mateo County
Principal & Co-Owner, Good City Company



Amy Buckmaster

President & CEO, Chamber San Mateo County

Thank You to Our Sponsors!

Principal Sponsors

Genentech

A Member of the Roche Group



Saturday Evening Dinner Sponsor



Premier Sponsors



General Session Sponsors



Media Sponsors



Mid-Morning Break Sponsor



Badge Sponsor



Corporate Sponsors



Schedule of Events

Friday, April 17

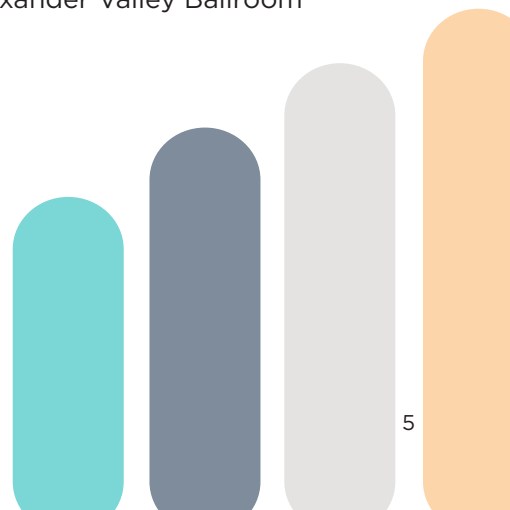
Time	Event	Location
4:00pm – 6:00pm	Registration	Alexander Valley Foyer
6:00pm – 8:00pm	Welcome Reception and Dinner	Knights Valley Garden

Saturday, April 18

Time	Event	Location
7:30am – 8:30am	Registration	Alexander Valley Foyer
7:45am – 9:20am	Opening General Session and Breakfast	Alexander Valley Ballroom
9:30am – 10:20am	Session 1 (Breakouts A – D)	See session descriptions on pages 6 - 7
10:25am – 11:15am	Session 2 (Breakouts A – D)	
11:15am – 11:25am	Mid-morning Break	Alexander Valley Foyer
11:25am – 12:15pm	Session 3 (Breakouts A – D)	See session descriptions on pages 6 - 7
12:20pm – 1:10pm	Session 4 (Breakouts A – D)	
1:10pm – 2:50pm	Luncheon General Session	Alexander Valley Ballroom
2:50pm – 6:00pm	Unscheduled Time – Networking	
6:00pm – 7:00pm	Reception	Sonoma Valley Courtyard
7:00pm – 9:00pm	Dinner and Networking	Alexander Valley Ballroom

Sunday, April 19

Time	Event	Location
8:30am – 11:00am	Closing General Session and Breakfast	Alexander Valley Ballroom



Session Descriptions

Opening General Session

Leading with Trust: How Confidence in Government, Public Institutions and Each Other Is Essential for our Shared Prosperity

Location: Alexander Valley Grand Ballroom

Our capacity to resolve issues and plan for and build a prosperous future is predicated on the simple element of trust. Unfortunately, trust in our government is at an all-time low; trust in our public institutions is routinely under question; and our trust in each other is increasingly lacking. In this session, three prominent leaders in our region will discuss how transparency, collaboration and accountability build confidence and will explore what it takes to restore and sustain trust in an era of rapid change.

Speakers

- Peter Leroe-Muñoz, Senior Vice President & General Counsel, Bay Area Council
- Sam Liccardo, U.S. Representative, California's 16th District, United States House of Representatives
- Dr. Lynn Mahoney, President, San Francisco State University

Moderators

- Julie Lind, Executive Officer, San Mateo County Central Labor Council & Progress Seminar Co-Chair
- Nicole Taylor, President & CEO, Silicon Valley Community Foundation & Progress Seminar Co-Chair

Breakout Session A

Continued Progress on the Horizon: What's Holding Us Back?

Location: Dry Creek 1

There are a number of factors that are key determinants to the success of a community. San Mateo County is fortunate to have a healthy economy, safe cities and towns, stable local governments, nationally-ranked educational institutions and a spirit and history of innovation and entrepreneurship. However, even with those strengths, our community faces challenges that put our future prosperity at risk. This session will explore a number of those areas and focus discussions on how to mitigate those risks.

Speakers

- Andrea Jones, Consulting Director, Children's Collective and San Mateo County's Child Care Blueprint
- Mark Orcutt, President & CEO, East Bay Leadership Council
- Marlena Sessions, Executive Director, NOVAworks

Moderators

- Lisa Gauthier, Supervisor, San Mateo County Board of Supervisors
- Melissa Moreno, Chancellor, San Mateo County Community College District

Breakout Session B

Addressing our Regional Transit Crisis: Ballot Measure Funding, Accountability & Efficiency, and Transit Transformation

Location: Russian River Valley Ballroom 2

It's simple: our regional public transportation agencies are facing a budget cliff, and without new funding sources, services are at risk of being drastically curtailed. A fiscally healthy public transportation network keeps our region moving and working – literally. Last year, through the leadership of our regional state legislative delegation, Senate Bill 63 was signed into law, allowing for a regional transportation measure to be placed on the ballot for a sales tax to support the Bay Area transit systems. This session will discuss the details of that measure and the impact of its passage or failure.

Speakers

- Michelle Bouchard, Executive Director, CalTrain
- April Chan, General Manager/CEO, San Mateo County Transit District
- Michael Jones, Deputy General Manager, Bay Area Rapid Transit

Moderators

- Marc Berman, Assemblymember, California State Assembly
- Don Cecil, Principal, MC2 Bay Area Public & Government Affairs Consulting

Session Descriptions (Continued)

Breakout Session C

Building with Backbone: Confronting the Forces that Limit, Frustrate and Stop Housing Development

Location: Chalk Hill

Not sure if you've heard, but San Mateo County needs more housing. It's cheeky but true. Recent changes to housing regulations at the state level are impacting how cities are working to address the ongoing affordable housing crisis in the Bay Area. This session will explore the flexibility for and expectations of cities to deliver housing opportunities and the reforms needed to make building more financially viable for developers.

Speakers

- Elaine Breeze, Senior Vice President for Development, SummerHill Apartment Communities
- David Hopkins, President of Development and Investment and Managing Partner, Sares Regis
- Linda Mandolini, President & CEO, Eden Housing
- Jeff Schwob, Community Development Director, City of Redwood City
- Nell Selander, Director of the Economic & Community Development, City of South San Francisco

Moderators

- Donna Colson, Councilmember, City of Burlingame
- Nicole Fernandez, Deputy Mayor, City of San Mateo

Breakout Session D

Integration, not Elimination: AI and the Transformation of How We Work

Location: Sonoma Mountain

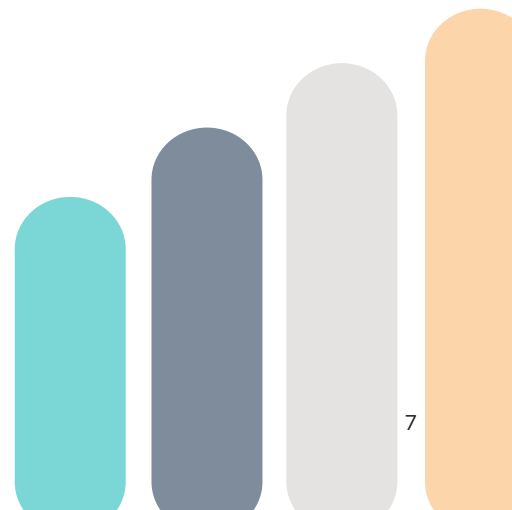
As AI rapidly reshapes the workplace, organizations are rethinking how work is designed, distributed, and valued. This session will examine the balance employers must strike in reinforcing that people do the work, while AI serves as an increasingly sophisticated tool to enhance workers' capabilities to allow for more meaningful, mission-driven work. The discussion will also address the growing urgency to train, protect, and recalibrate the workforce; balance artificial intelligence with emotional intelligence; navigate ethical considerations; and develop practical frameworks that enable productive, responsible coexistence between people and technology in the evolving future of work.

Speakers

- Amanda Brophy, Director, Grow with Google
- Dhruv Diddi, Founder, Solo Tech
- Lisa Kresge, Senior Researcher, Technology and Work Program, UC Berkeley Labor Center
- Dr. Vincent Liu, Chief Data Officer, The Permanente Medical Group, Kaiser Permanente
- Chris Waugh, Chief Innovation Officer, Sutter Health

Moderators

- Rosanne Foust, President & CEO, SAMCEDA & Progress Seminar Co-Chair
- Michele Lew, Senior Vice President and Chief Government Relations Officer, Stanford Medicine Children's Health



Session Descriptions (Continued)

Luncheon General Session

Leading with Innovation: Keeping San Mateo County America's Biotech Capital

Location: Alexander Valley Grand Ballroom

This session will highlight San Mateo County's international biotech leadership and innovation roles, from groundbreaking research to a thriving public-private ecosystem. Business and thought leaders of our region's biotech industry will share the strategies, policies and partnerships that fuel continued growth in San Mateo County and the lessons other regions can learn from our success. Attendees will leave with a clear view of what it takes to sustain biotech leadership in a rapidly evolving global business, political and legal landscape.

Speakers

- Mike Guerra, President & CEO, California Life Sciences
- Fergus O'Shea, Senior Vice President, Real Estate & Workplace, Genentech
- Betsy Ricketts, Vice President, Policy, Government and Public Affairs, Ultragenyx

Moderators

- Kevin Mullin, U.S. Representative, California's 15th District, United States House of Representatives
- Diane Papan, Assemblymember, California State Assembly

Sunday Closing Session

Leading and Collaborating Together: Strengthening the Peninsula's Three Counties

Location: Alexander Valley Grand Ballroom

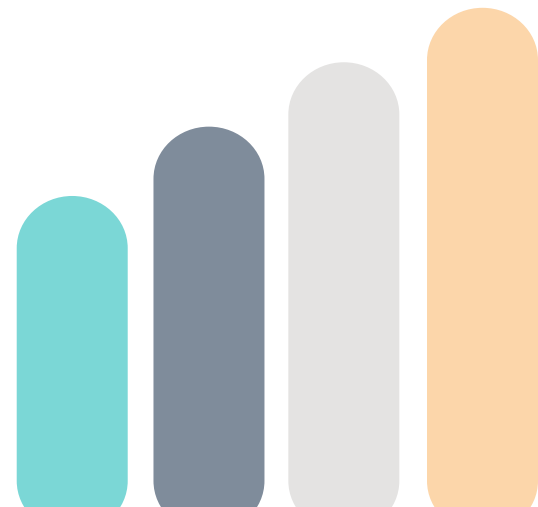
San Mateo, San Francisco and Santa Clara Counties and the 36 cities and towns that form the greater Peninsula are hubs of innovation, prosperity, opportunity, excellence, culture and natural beauty. For the region's prosperity to be sustained, intentional care must be taken to nurture existing relationships and partnerships and opportunities leveraged to forge new ones. Yet, the Peninsula - with all its exemplars - still faces dramatic economic, social, racial, legal and social inequities that can only be addressed through shared efforts across county borders.

Speakers

- Noelia Corzo, President, San Mateo County Board of Supervisors
- Otto Lee, President, Santa Clara County Board of Supervisors
- Rafael Mandelman, President, City and County of San Francisco Board of Supervisors

Moderators

- Mike Callagy, County Executive Officer, County of San Mateo & Progress Seminar Co-Chair
- Rosanne Foust, President & CEO, SAMCEDA & Progress Seminar Co-Chair



Progress Seminar Attendees

Note: Names in **bold, teal** signify a Chamber San Mateo County Board Member. Names in **bold, black** signify a first-time Progress Seminar attendee.

Name	Title	Representing
Aaron Aknin	Principal	Good City Company
Lelan Anders	Employment Training Manager	NOVAworks
Amanda Anthony	Economic Development Manager	City of Redwood City
Jessica Arline	Senior Director, Community Health & Partnerships	Stanford Healthcare
Noemi Avram	Board Member	San Mateo County Event Center
Mitchell Bailey	Owner & Principal Consultant	MBailey Advisors, LLC
Ed Barberini	Chief of Police	San Mateo Police Department
Leslie Barker Rodriguez	Partner	California Strategies, LLC
Felicia Basques	Director of Administration	Chamber San Mateo County
Diana Bautista	Government Relations Manager	Stanford Medicine Children's Health
Emily Beach	Chief Communications Officer	San Mateo County Transit District
Sue Beckmeyer	Councilmember	City of Pacifica
Kristina Bell	Chief of Police	Redwood City Police Department
Laura Bent	CEO	Samaritan House
Marc Berman	Assemblymember, District 23	California State Assembly
Eric Bet	Principal	Lane Partners
Nil Blackburn	Interim City Manager	City of San Carlos
Glen Bongji	General Manager	Recology of the Coast
Rolando Bonilla	Chief Strategy Officer	Voler Strategic Advisors
Sabrina Bortoli DeBattista	Administrative Manager	South San Francisco Scavenger Company
Michelle Bouchard	Executive Director	Caltrain
Evan Boyd	Regional Vice President	Recology
Elaine Breeze	Senior Vice President	SummerHill Apartment Communities
Amanda Brophy	Director	Grow with Google
Elyse Brummer	Executive Director	AgeUp, Inc.
Amy Buckmaster	President & Chief Executive Officer	Chamber San Mateo County
Mark Burri	Business Manager	Plumbers & HVACR Mechanics Local Union 467 & Apprenticeship Training Center
David Burruto	District Director	Office of Assemblymember Diane Papan
David Button	President	South San Francisco Scavenger Company
Mike Callagy	County Executive	County of San Mateo
Héctor Camacho	Executive Director	San Mateo County Office of Education
Aracely Campa Ramirez	Senior Director, Government Relations	California Life Sciences
Baraka Carter	Fire Chief	Redwood City Fire Department
Mollie Carter	Outreach and Community Lead	Sustainable San Mateo County
Gustavo Castillo	Community Relations Manager	Monterra Credit Union
Katie Causey	Manager, Community Relations	Sutter Health
Don Cecil	Principal	MC2 Bay Area Public Affairs
April Chan	General Manager/CEO	San Mateo County Transit District
Charlsie Chang	Government & Community Affairs Officer	SamTrans
Tilly Chang	Executive Director	San Francisco County Transportation Authority
Bill Chiang	Regulatory Relations Manager	PG&E
Isabella Chu	Councilmember	City of Redwood City

Progress Seminar Attendees

Name	Title	Representing
Marie Chuang	Councilmember	Town of Hillsborough
Sam Chung	Senior Vice President, Government Relations & External Affairs	California Life Sciences
Heather Cleary	CEO	Peninsula Family Service
James Coleman	Councilmember	City of South San Francisco
Donna Colson	Councilmember	City of Burlingame
Kate Comfort Harr	Executive Director	HIP Housing
Noelia Corzo	Board President	San Mateo County Board of Supervisors
Lisa Costa Sanders	Co-Owner	Good City Company
Leah Cowan	Director, External Affairs	Sutter Health
Terrie Crenshaw	Workforce Development Consultant	San Mateo Adult Career Education
Linda Crose-Andersen	President	San Mateo County Association of REALTORS
Rod Daus-Magbual	Councilmember	City of Daly City
Nicole Davis	Founder	Fortitude Careers
Monica Devincenzi	Community Outreach Manager	Recology San Mateo County
Lisa Diaz Nash	Councilmember	City of San Mateo
Dhruv Diddi	Founder	Solo Tech
Kathy Duong	Public Policy Manager	Amazon
Kaia Eakin	Vice Mayor	City of Redwood City
John Ehrbar	CEO	YMCA of Silicon Valley
Adam Ely	Assistant County Executive	County of San Mateo
Jessica Epstein	Director, Government and Community Affairs	San Mateo County Transit District
Georgia Farooq	Chief Executive Officer	Thrive Alliance
Tyra Fennell	Senior Manager, External Affairs	Genentech
Nicole Fernandez	Deputy Mayor	City of San Mateo
Eddie Flores	Councilmember	City of South San Francisco
Allison Follett	Program Coordinator	Chamber San Mateo County
Rosanne Foust	President & Chief Executive Officer	San Mateo County Economic Development Association
Anders Fung	Councilmember	City of Milbrae
Sarah Galvez	Public Policy Manager, AI Innovation	Meta
Papia Gambelin	Managing Director, State & Local Government Affairs - Western Region	United Airlines
Iliana Garcia-Ruiz	Owner	Iliana Garcia Photography
Kevin Gardiner	Principal	Kevin Gardiner & Associates
Dani Gasparini	Commissioner	Port of Redwood City
Lisa Gauthier	Supervisor	San Mateo County Board of Supervisors
Jeff Gee	Vice President	Swinerton Management & Consulting
Alane Gilbrech	Executive Officer	San Mateo County Association of REALTORS
Jill Golub	Principal	BMW
Emma Gonzalez	Chief of Community Affairs and Programming	County of San Mateo
Javier González	Head of Government Affairs and Public Policy	Google
Maurice Goodman	President	San Mateo NAACP
Desiree Green	San Mateo County Central Labor Council	San Mateo Labor Council

Progress Seminar Attendees

Name	Title	Representing
Greg Greenway	Executive Director	Seaport Industrial Association
Mike Guerra	President & CEO	California Life Sciences
Judith Guerrero	Executive Director	Coastside Hope
Michael Guingona	Trustee	San Mateo County Community College District
Lennies Gutierrez	Principal and Owner	LMG Consulting & Strategies
Gina Hamilton	Business Manager	Redwood City Fire Department
George Hamilton	Chief Strategy Officer	Stanford Medicine Children's Health
Charles Hansen	Chief Program Officer	Peninsula Family Service
Kaarin Hardy	Co-President	Leadership Council San Mateo County
Darian Harris	CEO, Mills Peninsula Medical Center	Sutter Health
Jim Hartnett	CEO	HJSR Solutions LLC
Patrick Heisinger	City Manager	City of Redwood City
Marc Hershman	Director of Government Affairs	Peninsula Clean Energy
Nicholas Hodges	Chief Operating Officer	LifeMoves
Ariane Hogan	Head of Local Government Affairs	Genentech
Ka'Ryn Holder-Jackson	Executive Director	San Mateo County Consortium for Adult & Career Education
Reuben Holober	Mayor	City of Milbrae
Richard Holober	Board Vice President	San Mateo County Community College District
David Hopkins	President of Development and Investment and Managing Partner	Sares Regis
Diane Howard	Councilmember	City of Redwood City
Sarah Hubbard	Executive Director	Sustainable San Mateo County
Joshua Hugg	Governmental Affairs Program Manager	Midpeninsula Regional Open Space District
Chip Huggins	Founder and Principal	Chip Huggins Consulting
John Hutar	President & CEO	The San Francisco Peninsula
Dawn Jedkins	Co-CEO	DES Architects + Engineers
Stacy Jimenez	Councilmember	City of Foster City
Blain Johnson	Director, Site Services Communications	Genentech
Dana Johnson	Commissioner	San Mateo County LGBTQIA+ Commission
Carlin Johnson Politzer	Senior Program Officer	The Sobrato Organization
Michael Jones	Deputy General Manager	Bay Area Rapid Transit
Andrea Jones	Consulting Director	The Children's Collective
Cathy Jordan	Vice Mayor	City of Belmont
Ellen Kamei	Director of Government Affairs & Public Information Officer	Foothill-De Anza Community College District
Allison Keaney	Chief Executive Officer	Cow Palace
Frank Kern	Councilmember	City of Brisbane
Rabiah Khalid	Manager, Government & Community Affairs, South Bay & San Francisco	Comcast
Ramsey Khash	Chief Business & Strategy Officer	One Life Counseling Center
Alex Khojikian	City Manager	City of San Mateo
Art Kiesel	Mayor	City of Foster City
Sarah Kinahan	Board President	San Carlos School District
Camren Kremers	Real Estate Investment Analyst	Stanford University

Progress Seminar Attendees

Name	Title	Representing
Lisa Kresge	Senior Researcher, Technology and Work Program	UC Berkeley Labor Center
Paul Krupka	Owner	Krupka Consulting
Pamela Kurtzman	CEO	Sequoia Healthcare District
Joe La Mariana	Executive Director	RethinkWaste
Amy Lam	Trustee	South San Francisco Unified School District
Maggie Lang	Chief Sales & Marketing Officer	The San Francisco Peninsula
Gina Latimerlo	Councilmember	City of Belmont
Neil Layton	Councilmember	City of San Carlos
Rich Lee	Assistant City Manager	City of South San Francisco
Junsen Lee	Patrol Captain	Redwood City Police Department
Wayne Lee	Board President	San Mateo County Community College District
Otto Lee	Board President	Santa Clara County Board of Supervisors
Felicia Leong	Chief Executive Officer	Daly City Colma Chamber of Commerce
Peter Leroe-Munoz	General Counsel and Senior Vice President of Technology & Innovation	Bay Area Council
Jeremy Levine	Policy Manager	Housing Leadership Council of San Mateo County
Michele Lew	Senior Vice President and Chief Government Relations Officer	Stanford Medicine Children's Health
Daisy Li	Owner	MoonChef
Sam Liccardo	U.S. Representative, California's 16th District	United States House of Representatives
Yayu Lin	President, Commercial Development & Advisory	Sares Regis
Webster Lincoln	Mayor	City of East Palo Alto
Julie Lind	Executive Officer/Executive Secretary-Treasurer	San Mateo County Central Labor Council
Vincent Liu	Chief Data Officer	The Permanente Medical Group, Kaiser Permanente
Kim Lopez	President	Cañada College
Kitty Lopez	Executive Director	First Five San Mateo County
Adam Loraine	Mayor	City of San Mateo
Avery Lyford	Commissioner	Belmont Parks & Recreation
Rhovy Lyn Antonio	Senior Vice President, Local Public Affairs	California Apartment Association
Yvette Madera	Senior Waste Zero Specialist	Recology San Mateo County
Lynn Mahoney	President	San Francisco State University
Jack Mahoney	Senior Director	Silicon Valley Community Foundation
Nova Maldonado	Chief Advocacy Officer	The San Francisco Peninsula
Juslyn Manalo	Councilmember	City of Daly City
Rita Mancera	Executive Director	Puente De La Costa Sur
Rafael Mandelman	Board President	City and County of San Francisco Board of Supervisors
Linda Mandolini	President & CEO	Eden Housing
Ivan Martinez	Board Chair	Sequoia Healthcare District
Elmer Martinez Saballos	Director of Community Engagement and Public Affairs	LifeMoves
Charlie Mastaloni	External Affairs	AT&T
Julia Mates	Mayor	City of Belmont
Stan Maupin	Commissioner	Port of Redwood City

Progress Seminar Attendees

Name	Title	Representing
Sara McDowell	Councilmember	City of San Carlos
Jim McGowan	Vice President, Government Relations	YMCA of Silicon Valley
Alex McIntyre	City Manager	City of San Bruno
David McLain	Executive Director of Community & Government Relations	San Mateo County Community College District
Camryn McNab	Director of Administration	BMW
Aaron McVean	Vice Chancellor of Educational Services and Planning	San Mateo County Community College District
Rico Medina	Mayor	City of San Bruno
Nevada Merriman	Vice President, Policy & Advocacy	MidPen Housing
Deborah Miller	Chief Advancement Officer	Peninsula Family Service
Marcus Mirt	General Manager	Recology San Mateo County
Karen Molinari	Economic Development Advisory Commission	City of San Carlos
Larry Moody	Government Affairs & Community Liaison	JobTrain
Jamillah Moore	Vice President of Student Affairs & Enrollment Management	San Francisco State University
Melissa Moreno	Chancellor	San Mateo County Community College District
Kevin Mullin	U.S. Representative, California's 15th District	United States House of Representatives
Seamus Murphy	Executive Director	The San Francisco Bay Ferry
Mark Murray	Principal	Lane Partners
Mollie Naber	Vice President of Housing Development, Strategic Initiatives	MidPen Housing
Mark Nagales	Vice Mayor	City of South San Francisco
Robert Newsom Jr.	Councilmember	City of San Mateo
Cameron Newton	Film Commissioner & Convention Services Manager	The San Francisco Peninsula
Bob Nguyen	Councilmember	City of Millbrae
Simon North	Practice Leader-Land Development / Principal	BKF Engineers
Larisa Ocañada	Marketing, Communications and Operations Manager	San Mateo County Economic Development Association
Christie Ochoa	Assistant Director of Community Affairs	Stanford Healthcare
Mike O'Neill	Trustee	San Mateo County Board of Education
Mark Orcutt	President & CEO	East Bay Leadership Council
Fergus O'Shea	Senior Vice President Real Estate & Workplace	Genentech
Afshin Oskoui	City Manager	City of Belmont
Christine Padilla	Director	Build Up San Mateo County
Marcella Padilla	Councilmember, District 7	City of Redwood City
Wade Painter	President & CEO	Monterra Credit Union
Robin Pang-Maganaris	Councilmember	City of Belmont
Bart Pantoja	Business Manager	Building & Construction Trades Council of San Mateo County
Diane Papan	Assemblymember, District 21	California State Assembly
Gina Papan	Commissioner	Metropolitan Transportation Commission
Andrea Pappajohn	Vice Mayor	City of Burlingame

Progress Seminar Attendees

Name	Title	Representing
Laura Parmer-Lohan	Executive Director	NAMI San Mateo County
Kathy Parmer-Lohan	Executive Director	San Carlos Education Foundation
Christine Pelosi	Candidate	CA Senate District 11 Candidate
Fernando Peña	Government Affairs Director	San Mateo County Association of REALTORS
Manuel Alejandro Pérez	President	College of San Mateo
Maya Perkins	Executive Director, Stakeholder Relations, Office of Government Affairs	Stanford University
Lisa Petrides	Trustee	San Mateo County Community College District
John Pimentel	Trustee	San Mateo County Community College District
Kirsten Pinochi	General Manager	Recology
Anthony Portantino	Director of California Government Affairs & Public Policy	Google
Margi Power	Co-President	Leadership Council San Mateo County
Mary Prem	CEO	South San Francisco Chamber of Commerce
Rebecca Prozan	CEO	Prozan Strategies, LLC
Dave Pucci	Fire Chief	Central County Fire Department
Alma Pulido	Program Officer	Chan Zuckerberg Initiative
Ashley Quintana	Public Policy Manager	Meta
Nancy Radcliffe	Commissioner	Port of Redwood City
Stephen Rainaldi	Councilmember	City of Milbrae
Patty Rally	Chief Development Officer	YMCA of Silicon Valley
Victoria Ramirez	Director of State and Local Government Affairs	Stanford Healthcare
Mario Rendon	District Director	Office of Congressman Kevin Mullin
Betsy Ricketts	Vice President, Policy, Government and Public Affairs	Ultragenyx
Sissy Riley	Councilmember	City of Milbrae
Alexandra Rinear	Waste Zero Manager	Recology San Mateo County
Zelica Rodriguez-Deams	Director of Thriving Communities	The Sobrato Organization
Marjory Ruiz Hidalgo	Senior Government Affairs Representative	PG&E
Kalimah Salahuddin	Executive Director	Rooted Together/ REACH Coalition
Juan Salazar	Public Policy Manager, Local Policy and Community Affairs	Meta
Jeff Schmidt	Councilmember	City of Menlo Park
Jeff Schwob	Community Development Director	City of Redwood City
Nell Selander	Director of the Economic & Community Development	City of South San Francisco
Marléna Sessions	Executive Director	NOVAworks
Sanya Singhal	Municipal Relationship Manager	Republic Services
Tom Smegal	General Manager	Bay Area Water Supply & Conservation Agency
Jenny Stahler	Business Manager	Redwood City Police Department
Mike Stancil	Executive Director	Daly City Partnership
Dana Stoehr	CEO	San Mateo County Event Center
Charles Stone	Partner	Goethals & Stone, PC
Chris Sturken	Councilmember	City of Redwood City
Patrick Sullivan	Councilmember	City of Foster City

Progress Seminar Attendees

Name	Title	Representing
Jennifer Sussman	Senior Vice President & Chief Marketing Officer	Monterra Credit Union
Glenn Sylvester	Mayor	City of Daly City
Lydia Tan	Senior Advisor	Bay Area Housing Finance Authority
Chek-Fong Tang	Founder/Principal	Studio T-SQ
Cecilia Taylor	Councilmember	City of Menlo Park
Angela Taylor	Director	San Mateo Adult & Career Education
Nicole Taylor	President & CEO	Silicon Valley Community Foundation
Lisa Tealer	Executive Director	Bay Area Community Health Advisory Council
Koren Temple-Perry	Chief Marketing Officer	Peninsula Family Service
Robert Tersini	Senior Vice President, Real Estate	The Sobrato Organization
Christine Thorsteinson	Senior Director, Community Impact & Policy	Silicon Valley Community Foundation
Crystal Tilton	Chief Executive Officer	Foster City Chamber of Commerce
Joey Toney	Assistant City Manager	City of San Bruno
Jennifer Torai	Senior Director of Local Government Affairs	Stanford Healthcare
Agustin Torres	Director of Local Government Affairs	Stanford University
Peter Tsai	Principal	Cadence Investments
Athena Ushana	Community and Government Affairs Manager	SIMS Metal
Adam Van De Water	Executive Director	Transbay Joint Powers Authority
Ana Vasudeo	Government & Community Affairs Manager	SamTrans
Joey Vaughan	Manager of Community Partnerships	Stanford Medicine Children's Health
Vicki Veenker	Mayor	City of Palo Alto
Lizet Vega	Business Development Officer	Monterra Credit Union
Louis Vella	Board President	Mid-Peninsula Water District
Phoebe Venkat	Councilmember	City of Foster City
Pranita Venkatesh	Mayor	City of San Carlos
Michael Verdone	Director	San Mateo County Association of REALTORS
Stacey Wagner	Public Affairs Director	Kaiser Permanente
Thomas Walsh	Councilmember	Town of Colma
Chris Waugh	Vice President and Chief Innovation Officer	Sutter Health
Vinny Way	Area Operations Manager	Graniterock
Jason Webb	Vice President, Real Estate & Operations	Chan Zuckerberg Initiative
John Whitehurst	Principal	BMW
Lucy Wicks	Assistant Vice President, Office of Government Affairs	Stanford University
Jennifer Wise	Vice Mayor	Menlo Park
Derek Wolfram	Interim Assistant City Manager	City of Redwood City
Megan Wooley-Ousdahl	Deputy City Manager	City of South San Francisco
Greg Wright	Vice Mayor	City of Pacifica
Kat Wuelfing	General Manager	Mid-Peninsula Water District
Jennifer Yamaguma	Deputy City Manager	City of Redwood City
Alex Youn	Director of Government & Community Affairs	Comcast
Allen Zaman	Director	Intrepid Electronic Systems
Moses Zapien	Executive Vice President	Silicon Valley Community Foundation
Renee Zimmerman	Vice President, Operations	YMCA of Silicon Valley
Irma Zoepf	Chief Operating Officer	Thrive Alliance
Kristine Zortman	Executive Director	Port of Redwood City

Progress Seminar Presenters



Marc Berman

Assemblymember, District 23, California State Assembly

Marc Berman has served in the California State Assembly since 2016, representing the 23rd District in Silicon Valley and surrounding coastal areas. He chairs the Assembly Business and Professions Committee and previously led the Elections Committee, focusing on voting rights, election security, and campaign transparency. He also heads the Select Committee reviewing California's higher education system.

Berman has passed over 100 laws, including measures to mail ballots to voters, phase out gas-powered landscaping equipment, improve college transfers, and simplify online subscription cancellations. His earlier work includes legislation on firearm safety training for physicians, suicide prevention in schools, deepfake regulation, and protections for sexual assault survivors.

Before state office, he served on the Palo Alto City Council and worked in education and law, including pro bono immigration and domestic violence cases. He lives in Menlo Park with his wife.



Michelle Bouchard

Executive Director, Caltrain

Michelle Bouchard has served as Executive Director of Caltrain since April 2021. She brings nearly 30 years of experience in the transit industry, with a long history of progressively senior leadership roles at Caltrain. Under her direction, Caltrain successfully completed the landmark \$2.44 billion Electrification Project, which marked its one-year anniversary in September 2025 and represents the most significant transformation in the railroad's 160-year history. The project has delivered faster, quieter, and more reliable and frequent service - benefiting both riders and the communities Caltrain serves.

In 2018, Ms. Bouchard was recognized by Railway Age as one of its "Women in Rail" for her leadership, industry contributions, and community service. She currently serves as Chair of the Commuter Rail Coalition, a national advocacy organization for commuter railroads.

Ms. Bouchard earned a BA in Economics from Brown University and an MSc in Urban and Regional Planning from the London School of Economics.



Elaine Breeze

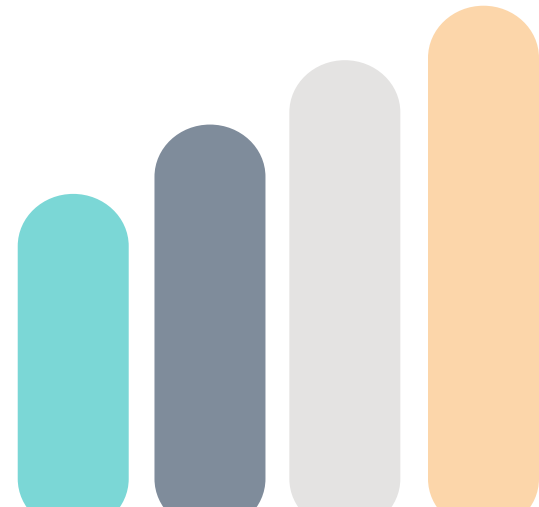
Senior Vice President of Development, SummerHill Apartment Communities

Elaine has been with SummerHill Apartment Communities since 2008 and is responsible for project entitlements and development for new communities in Northern California.

She has been affiliated with the Marcus & Millichap companies since 1988, starting as a research analyst. While holding the positions as Senior Vice President and Managing Director with affiliate SummerHill Homes until 2008, she oversaw the development of award-winning single-family and multifamily for-sale projects throughout San Mateo and Santa Clara Counties.

Elaine graduated from the University of California, Berkeley in 1988 with a Bachelor of Arts degree in History. She completed post-graduate studies in Real Estate and Architecture at UC Berkeley and courses in Construction Practices at San Jose State University.

She is a member of the SAMCEDA Executive Board and HEART of San Mateo County Board. She has previously served on the boards of San Mateo County Home for All, Grand Boulevard Task Force, San Mateo County Historical Association, San Mateo Area Chamber of Commerce, Hillsborough Auxiliary to Peninsula Family Service, and AbilityPath.



Progress Seminar Presenters



Amanda Brophy
Director, Grow with Google, Google

Amanda leads Google's workforce development work, including the Google Career Certificates program, which provides people access to in-demand, high paying jobs regardless of educational background or work experience. Under her leadership, these certificates have provided significant upward mobility to 1 million jobseekers and counting.

Amanda has over 20 years of experience in General Management, Marketing, and Business Development. Her career spans from early stage startups to Fortune 50 companies like Box and Microsoft. She holds an MBA from the MIT Sloan School of Management and a BA in Economics from Stanford University. Amanda is a proud mom of three kids, her dog Einstein and lives in the Bay Area with her family.



Mike Callagy
County Executive, County of San Mateo

As County Executive Officer, Mike Callagy oversees the efficient running of daily County operations and carries out policies established by the Board of Supervisors. Mike joined the County in 2013 as a Deputy County Manager and was named Assistant County Manager in April 2016. In November 2018, he assumed the role of County Manager after being appointed by the Board of Supervisors. In this role, Mike has made ending homelessness a key priority and has deemed 2022 "The Year of Working Together to End Homelessness."

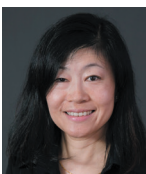
Mike has more than 37 years of public sector service experience. Before joining the County, Mike spent 29 years with the San Mateo Police Department, running day-to-day operations as the deputy police chief until his retirement. He is a licensed attorney and in addition to his law degree from Santa Clara University, holds a Bachelor of Arts and Master's in public administration from the College of Notre Dame and a Master's in homeland defense and security from the Naval Postgraduate School.



Don Cecil
Principal, MC² Bay Area Public Affairs Consulting

Don Cecil has been providing public and government affairs consulting to corporations, public agencies, trade associations, campaigns, and nonprofits in the Bay Area for the past 25 years. Don works successfully on behalf of clients, stakeholders, and issues by maintaining positive relationships and always being honest and focused on solutions with all parties.

Don founded MC2 Bay Area Public Affairs Consulting in 2010 with the late Muffie Meier. The firm remains focused on matters that improve local government, build strong communities for residents and businesses, and create a common sense balance between a strong local economy, land use development, responsive government, and enhanced quality of life. MC2 blends an extensive network in business, government, media, and community circles - resulting in customized, intelligent, and winning approaches for clients.



April Chan
General Manager/CEO, San Mateo County Transit District (SamTrans)

April Chan became General Manager/CEO of the San Mateo County Transit District on November 1, 2022. The District manages mobility in San Mateo County, operating SamTrans bus service and Redi-Wheels and RediCoast paratransit. In her role, Chan also serves as Executive Director of the San Mateo County Transportation Authority, overseeing transportation sales tax funds for countywide projects. She leads shared staff services for the Peninsula Corridor Joint Powers Authority, which runs Caltrain, and supports the San Mateo County Express Lanes Joint Powers Authority Board, which manages the county's express lanes.

Chan has worked for the Transit District since 2000, advancing from Senior Planner to Chief Officer and Acting Deputy General Manager. She began her transportation career at the Metropolitan Transportation Commission in 1992. Chan holds a Juris Doctor degree from Santa Clara University.

Progress Seminar Presenters



Donna Colson
Councilmember, City of Burlingame

Donna served as Mayor in 2024 and was elected to the Burlingame City Council in 2015 after years of community involvement, including roles in parks and recreation, redevelopment committees, and local foundations. She previously served on the San Mateo County Employees' Retirement Association Board (1998-2007), holding leadership roles such as Chair and committee head. Her council work emphasizes affordable housing, sustainability, fiscal responsibility, pension management, and economic development.

Her community service includes leadership in school organizations, youth sports, and local education funding initiatives. She also serves on advisory and nonprofit boards, including UC Berkeley Haas Center for Gender Equity and Leadership, Filoli Estate, and the National Trust for Historic Preservation.

Donna had a 25-year finance career, working in real estate, investment consulting, and asset management. She later founded a futsal sports center. A Burlingame resident since 1998, she holds a BA and MBA from UC Berkeley and has received multiple community service awards.



Noelia Corzo
President, San Mateo County Board of Supervisors

A lifelong resident of San Mateo County, Noelia Corzo is the daughter of Guatemalan immigrants and a proud graduate of all local public schools including Cañada College and San Francisco State University. Noelia became a mother at the age of 20 and has worked as a foster youth advocate, community organizer, and non-profit social worker.

In 2017, she was elected as a trustee for the San Mateo-Foster City School District and served for five years. Supervisor Corzo began her term in January of 2023 and became the first Latina and Indigenous County Supervisor in San Mateo County history.

Supervisor Corzo represents District 2 which is made up of San Mateo, Foster City, and over half of Belmont, but prides herself on having a county-wide and regional approach to her decision-making. Most importantly, she is Mikey's mama and a dog-mom to their dog, Quetzi.



Dhruv Diddi
Founder, Solo Tech

Dhruv Diddi is an entrepreneur, software engineer, and AI innovator with more than a decade of experience working and creating in the San Francisco Bay Area. He is the founder of Solo Tech, a platform building the infrastructure for Physical AI, with a focus to train, deploy, and iterate on robot intelligence, and backed by Meta and NVIDIA. Dhruv has also worked at leading technology companies including Google and Turo, building scalable software and machine learning systems. His work spans full-stack engineering, data systems, and hardware-integrated AI applications.

Dhruv is passionate about democratizing AI, particularly in underserved environments, with applications across healthcare, agriculture, and education. He holds a bachelor's degree in computer science from the University of Illinois Urbana-Champaign.



Nicole Fernandez
Deputy Mayor, City of San Mateo

Born in San Mateo and raised in Belmont, Deputy Mayor Nicole Fernandez is a lifelong San Mateo County resident. Deputy Mayor Fernandez is also on the board of directors for the Home Association of North Central San Mateo and is a former two-term San Mateo Community Relations Commissioner.

Deputy Mayor Fernandez is a proud first-generation American and the first person of South Asian origin to serve on the San Mateo City Council. When not working on City of San Mateo business, you will find Nicole spending time with her family or at karaoke singing classic Fleetwood Mac.

Progress Seminar Presenters



Rosanne Foust

President & CEO, San Mateo County Economic Development Association (SAMCEDA)

At SAMCEDA, Rosanne Foust directs conversations important to maintaining a strong local and regional economy, attracting and retaining major employers and good jobs, and creating partnerships between business and government to address the critical issues of affordable housing, mobility improvements and maintaining a good quality of life. Previously, Rosanne had a twenty-year career with Alsace Development International USA, Inc.

Rosanne currently serves as a board member of the Sequoia Healthcare District. She previously served for twelve years on the City Council in Redwood City, including as Mayor and Vice Mayor. Rosanne has also served on and led numerous boards and commissions. She holds a master's degree in public administration and bachelor of arts degree in International Studies and Economics.

She has been honored as one of the "Most Influential Women in Business in the Bay Area" by the San Francisco Business Times, as "Businesswoman and Person of the Year" by Chamber San Mateo County, named "Woman of the Year" by then Assemblymember Kevin Mullin, and was inducted to the San Mateo County Women's Hall of Fame.



Lisa Gauthier

Supervisor - District 4, San Mateo County Board of Supervisors

Supervisor Lisa Gauthier was elected to the San Mateo County Board of Supervisors in November 2024. She represents District 4, which includes Redwood City, East Palo Alto, the areas within Menlo Park east of El Camino Real and including the Belle Haven neighborhood, and the unincorporated community of North Fair Oaks.

Supervisor Gauthier was elected to the East Palo Alto City Council in 2012. She held the positions of Vice Mayor in 2014, 2018, and 2022, and Mayor in 2015, 2019, and 2023. In addition to her roles in city government, Supervisor Gauthier served as the Senior Vice President of Inclusion & Belonging at the Silicon Valley Leadership Group.

Supervisor Gauthier is an active board member of the City/County Association of Governments, San Mateo County Office of Emergency Services, San Mateo County's One Shoreline Agency and a regional area director for Black Women Organized for Political Action.

Her contributions have been recognized as one of Silicon Valley's 100 Women of Influence by the Silicon Valley Business Journal in 2020 and receiving the Woman of the Year Award from Assemblymember Marc Berman in 2022.



Mike Guerra

President and Chief Executive Officer, California Life Sciences

Mike Guerra is President and CEO of California Life Sciences (CLS), the state's leading trade association for the life sciences industry, representing over 1,300 member companies. He strives to advance California's leadership as the world's leading life sciences innovation ecosystem by advocating for effective national, state, and local public policies and supporting entrepreneurs and life sciences businesses.

A seasoned business leader, Mike chairs the Council of State Biotech Associations and serves on multiple boards, including CLS, CLSI, GeminiBio, and the Life Sciences Workforce Collaborative. He previously held senior roles at VWR International, including serving as Vice President of Sales for the Western U.S., overseeing the pharmaceutical, biopharmaceutical, and industrial sectors. Before joining CLS, he was Vice President of the Americas at Avidity Science, where he helped grow the company's life sciences business and strategy.

Mike holds a Bachelor of Science from San Jose State University.



Dave Hopkins

President, Development + Investment | Managing Partner, Sares Regis Group of Northern California

Dave Hopkins joined Sares Regis Group in 2007. His responsibilities include leading the strategic direction for Sares Regis and Regis Homes' development activities, as well as executive management of the various Sares Regis operating divisions. Dave is a member of the firm's Investment Committee.

Progress Seminar Presenters



Andrea Jones
Consulting Director, The Children's Collective

Andrea believes in the intersections of inclusivity, values-based leadership and results. She knows that empowered, diverse and equitable groups create great change in the world and as a leader in the philanthropic and social impact sectors, she brings those core beliefs to her work, whether that is in grantmaking, community building, program design or leading teams and organizations. Andrea's career has ranged from the nonprofit sector to philanthropy, including Senior Director of Bay Area Giving for the Chan Zuckerberg Initiative where she led strategic and place-based portfolios across the region, resulting in more than \$50 million in funding. In her current role, she serves as the Consulting Director for The Children's Collective, an initiative of Silicon Valley Community Foundation. The Children's Collective unites communities to advocate, mobilize, and connect sectors so every child and family in San Mateo County has the support they need to thrive.



Michael Jones
Deputy General Manager, San Francisco Bay Area Rapid Transit District (BART)

Michael Jones is the Deputy General Manager (DGM) at the San Francisco Bay Area Rapid Transit District (BART), where he brings more than two decades of executive leadership experience in the transit industry to support the agency deliver on its mission of safe, reliable, clean, and quality service. As the DGM, Jones supports the General Manager in leading day-to-day operations performing the functions of Chief Operating Officer.



Lisa Kresge
Senior Researcher, Technology & Work Program, UC Berkeley Labor Center

Lisa is a Senior Researcher in the Technology and Work Program at the UC Berkeley Labor Center, where she studies issues at the intersection of technology, labor, and employment relations. Her work examines artificial intelligence and other digital workplace technologies, with particular attention to the implications for job quality, worker voice, and collective bargaining. Most recently, she published *Negotiating Tech: An Inventory of U.S. Union Contract Provisions for the Digital Age*, an online resource documenting technology-related provisions in over 500 U.S. collective bargaining agreements. Trained as a social scientist, she holds degrees in anthropology, sociology, and community development.



Otto Lee
President, Santa Clara County Board of Supervisors

Otto grew up in Hong Kong and immigrated to California at 15 amid political unrest. His parents sacrificed their careers—his father became a restaurant owner—instilling in him a strong work ethic and commitment to service. Otto earned a B.S. in Chemical and Nuclear Engineering from UC Berkeley and a law degree from UC Hastings.

He joined the U.S. Navy, serving on active duty during the Gulf War and later in the Reserves. In 2008, he deployed to Baghdad as Chief of Drawdown Logistics Policy, helping coordinate the safe return of over 150,000 troops and closure of more than 200 bases. For his leadership under dangerous conditions, he received the Bronze Star and later retired with the Meritorious Service Medal.

A longtime Sunnyvale resident, Otto served on the Planning Commission and City Council, including as Mayor, advancing environmental initiatives. He co-founded an intellectual property law firm and, in 2020, was elected Supervisor for District 3.



Peter Leroe-Muñoz
Senior Vice President & General Counsel, Bay Area Council

Peter brings deep expertise at the intersection of law, technology, and public policy, along with years of respected leadership in Silicon Valley. In his role, Peter oversees policy management and advocacy to ensure Silicon Valley's innovation leadership in matters of artificial intelligence, data centers, data privacy, international trade, antitrust, digital assets, immigration and more.

Peter began his career in intellectual property litigation and held leadership legal roles at a financial firm. Prior to his corporate experience, Peter served as a Deputy District Attorney where he prosecuted narcotics crimes, violent offenses, and financial crimes. From 2011-2022, Peter was an elected official and served as Mayor Pro Tem and Council Member for the City of Gilroy.

Peter is considered a thought leader for innovation topics and is often quoted in a variety of publications including Bloomberg, The Wall Street Journal, The New York Times, China Global Television Network, The SF Chronicle, and San Jose Mercury, among others.

He earned a BA with honors in Political Science from UC Berkeley and a JD from Harvard Law School.

Progress Seminar Presenters



Michele Lew

Senior Vice President and Chief Government Relations Officer, Stanford Medicine Children's Health

Michele Lew serves as Senior Vice President and Chief Government Relations Officer for Stanford Medicine Children's Health. Prior to joining Stanford, Michele served as CEO of The Health Trust, a nonprofit operating foundation focused on building health equity in Silicon Valley, and CEO of AACI, a nonprofit community health center in San Jose. In addition, Michele served as the district director for former California state legislator Joe Simitian. Michele has served on numerous nonprofit boards, and she served as the community member on the San Jose Mercury News editorial board. A Santa Clara County native, Michele holds a B.A. in economics from Yale University and a Master in Public Policy degree from Harvard University.



Sam Liccardo

U.S. Representative, California's 16th District, United States House of Representatives

Congressman Sam Liccardo represents California's 16th Congressional District, spanning Half Moon Bay, Pacifica, San Jose, Palo Alto, and Mountain View. Formerly Mayor of San José, he led economic growth, climate initiatives, housing expansion, and public safety reforms, making the city the largest in the U.S. to commit to carbon neutrality and the safest large city during his tenure. Liccardo secured funding for housing, transit, and Caltrain electrification, attracting tech investments from Google, Apple, Amazon, and Adobe.

In Congress, he serves on the House Financial Services Committee and chairs the New Democratic Coalition's Innovation & Technology Working Group, promoting bipartisan solutions to lower costs, expand housing, strengthen safety, and advance clean energy. In 2025, he launched the New Dems' Innovation Agenda. A former criminal and federal prosecutor, Liccardo holds degrees from Harvard Law, Harvard Kennedy School, and Georgetown University. He lives in Saratoga with his wife, Jessica Garcia-Kohl, a nonprofit leader in child health and education.



Julie Lind

Executive Officer/Executive Secretary-Treasurer, San Mateo County Central Labor Council

Julie Lind is a fourth-generation union member and is proudly in her fifteenth year with the San Mateo Labor Council. Julie began her career over 20 years ago working as a legislative staffer. Julie came to the San Mateo Labor Council in 2010 as the Political Director and became head of the organization in 2016.

Julie currently serves as a member of the State Federation/Central Labor Council Advisory Committee, Chair of the Board of the San Mateo County Union Community Alliance and Vice President of the California Federation of Labor Unions and served on the 2018 San Mateo County Charter Review Commission.

Julie has a bachelor's degree in English and a master's degree in public administration from San Jose State University. She serves as Vice President of the NOVAworks Board and is a member of the Chamber San Mateo County board. Julie has served as a Co-Chair of the Progress Seminar since 2021 and was honored as Chamber San Mateo County's 2023 Woman of the Year. Outside of work Julie volunteers in her second grader's classroom and is an active member of the PTA.



Dr. Vincent Liu

Chief Data Officer, The Permanente Medical Group, Kaiser Permanente

Vincent Liu, MD MSc is the Chief Data Officer for The Permanente Medical Group, Kaiser Permanente, a Senior Research Scientist at KP, Division of Research, and a pulmonary-critical care physician at the Kaiser Permanente Santa Clara Medical Center. He leads programs in AI implementation and evaluation to improve care delivery and patient outcomes in KP Northern California.

He has authored more than 200 scholarly publications and is an expert in the use of complex EHR data and health system implementation-evaluation to improve value-based care, including in sepsis and acute care. He has served as a technical expert panelist in AI and sepsis research for various agencies and chairs the NIH Clinical Data Management and Analysis study section.

Dr. Liu completed his medical education and residency at NYU's School of Medicine and his fellowship at Stanford University School of Medicine. He also holds two Master's degrees from Stanford in Health Services Research and Biomedical Informatics, and he completed his residency at Memorial Sloan Kettering Cancer Center.

Progress Seminar Presenters



Dr. Lynn Mahoney
President, San Francisco State University

Lynn Mahoney is the 14th president of San Francisco State University, serving over 22,000 students. The first woman appointed permanently to this role, she assumed office in 2019. Previously, Mahoney was provost and vice president for academic affairs at California State University, Los Angeles, and held leadership roles at CSU Long Beach and Purchase College, SUNY. She earned a B.A. in American Studies from Stanford University and a Ph.D. in History from Rutgers University and authored *Elizabeth Stoddard and the Boundaries of Bourgeois Culture*.

Mahoney serves on boards including the Bay Area Council, San Francisco Chamber of Commerce, and Workforce Investment Board, and is active in CSU and higher education advisory councils. Recognized for advancing student success, she has received awards from CSSA, NASPA, Excelencia in Education, and the San Francisco Business Times. Committed to enhancing student learning and faculty development, Mahoney continues to champion an exceptional educational experience for San Francisco State students.



Rafael Mandelman
President, City and County of San Francisco Board of Supervisors

Supervisor Rafael Mandelman represents District 8 on the San Francisco Board of Supervisors, including the Castro, Glen Park, Noe Valley, Diamond Heights, Mission Dolores, and Cole Valley. An openly LGBTQ leader, he joined the Board in 2018 and has focused on mental health, substance use, and homelessness, co-chairing the Methamphetamine Task Force, expanding behavioral health respite programs, and funding Street Crisis Response Teams. He has led climate initiatives, passing the Climate Emergency Resolution and requiring all-electric construction in new buildings.

Mandelman champions housing and LGBTQ+ rights, creating the Castro LGBTQ Cultural District, expanding trans healthcare, preserving affordable housing, and enabling safe shelters for unhoused residents. He supports transportation, pedestrian and bicycle safety, small businesses, and cannabis equity programs. Prior to the Board, he served as a Deputy City Attorney in Oakland and as a Trustee of City College of San Francisco. Mandelman holds degrees from Yale, Harvard Kennedy School, and UC Berkeley School of Law and lives in the Mission District.



Linda Mandolini
President and CEO, Eden Housing, Inc.

Linda Mandolini has served as President & CEO of Eden Housing since 2001, leading Eden to develop or acquire over 12,000 affordable rental apartments to serve over 22,000 low-income residents in communities throughout California.

Linda is also a leader in housing policy at the local, state, and national level, serving on several housing policy boards. Linda's advocacy has contributed to the passage of statewide and local housing initiatives that have generated billions in funding for affordable housing production.

Linda has received a number of awards, including being inducted into the Affordable Housing Finance's Hall of Fame (2025), California Homebuilder's Hall of Fame (2022), and Alameda County Women's Hall of Fame (2017). Under her leadership, Eden has been recognized as one of the top 50 affordable housing owners nationally.

A native of Massachusetts, Linda received her AB degree from Wheaton College and her MBA from Boston University. In her free time, Linda is an avid bicyclist, frequently riding for charitable causes.



Melissa Moreno
Chancellor, San Mateo County Community College District

Melissa Moreno came to the California Community College system in 2008 after 23 years as a small business owner in real estate. At Santa Barbara City College, she founded the award-winning Scheinfeld Center for Entrepreneurship & Innovation and rose to Dean of the Business Division and Vice President of the School of Extended Learning. In 2020, she joined the San Mateo County Community College District as President of Skyline College. In April 2023, she was named Chancellor—the second woman to hold that role in the District's century-plus history. As Chancellor, Melissa has championed the District's Free College initiative, driving exponential enrollment growth and benefiting tens of thousands of first-generation students. She has prioritized institutional accountability, equity, and community access across the District's three colleges.

Melissa holds a B.A. from UC Santa Barbara, a J.D. from Santa Barbara College of Law, and earns an MBA from UMass in May 2026.

Progress Seminar Presenters



Kevin Mullin

U.S. Representative, California's 15th District , United States House of Representatives

Congressman Kevin Mullin was first elected to the U.S. House of Representatives in 2022 after 10 years serving in the California State Assembly where he rose to leadership as Speaker Pro Tem. He previously served on the South San Francisco City Council and holds a bachelor's from the University of San Francisco and a master's in public administration from San Francisco State University.

Congressman Mullin sits on the influential House Committee on Energy and Commerce, which has the broadest jurisdiction of any congressional committee and impacts issues related to energy policy, consumer protections, public health, medical research, food and drug safety, environmental quality, telecommunications, and more.

Throughout his public service career, he has prioritized issues related to enhancing voter rights and defending democracy, protecting the environment while preparing communities for the impacts of climate change, and addressing affordability issues for working families.



Mark Orcutt

President & CEO, East Bay Leadership Council

Mark Orcutt is President & CEO of the East Bay Leadership Council and Executive Director of the Contra Costa Economic Partnership, where he leads cross-sector coalitions that advocate for policies helping businesses start, stay, and grow. With more than a decade of experience in public policy and nonprofit leadership, including roles at California Forward and leading Bay Area political campaigns, Mark has helped shape legislation at the local and state levels with significant impact in areas such as housing, workforce development, transportation, and economic growth. He has also launched initiatives to strengthen civic leadership, improve nonprofit governance, and expand healthcare career pathways. A Northern California native, he is a graduate of San Francisco State University.



Fergus O'Shea

Senior Vice President, Real Estate and Workplace, and Head of the Genentech Site, Genentech

Fergus O'Shea joined Genentech in January 2025 as senior vice president, Real Estate and Workplace, and head of the Genentech site. In this role, Fergus oversees all aspects of Genentech's site operations and strategic planning for Genentech's South San Francisco site. Among his responsibilities, Fergus leads the multi-billion-dollar effort to redevelop Genentech's campus over the coming decades. This initiative will transform the site by creating cutting-edge facilities to support the collaboration, innovation, and breakthrough science Genentech and Roche have long been known for. With an extensive career spanning real estate and development, Fergus has built his solid reputation through fostering strong community relationships, thoughtfully navigating public policy and carefully listening to stakeholders. He is a staunch champion of smart and sustainable urban planning.



Diane Papan

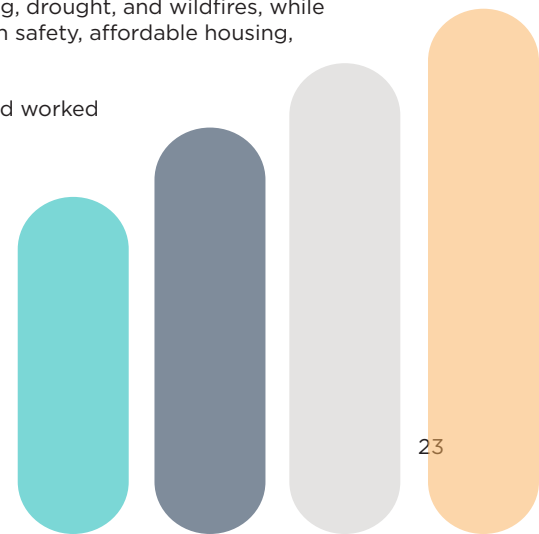
Assemblymember, District 21, California State Assembly

Diane Papan was elected to the California State Assembly in 2022 and reelected in 2024, representing the 21st Assembly District, which spans the Bayside of San Mateo County from Brisbane to East Palo Alto. She serves as Chair of the Assembly Committee on Water, Parks & Wildlife and sits on the Environmental Safety and Toxic Materials, Judiciary, Transportation, and Utilities & Energy Committees.

Prior to joining the Assembly, Papan served as mayor and city councilmember in San Mateo, where she built a reputation as a regional leader on infrastructure, transit, and climate adaptation.

In the Legislature, she focuses on addressing climate change, including flooding, drought, and wildfires, while advancing policies on water quality, women's health, accessible healthcare, gun safety, affordable housing, and public education.

A San Mateo County native, Papan earned degrees from UCLA and UC Law and worked as an attorney and nonprofit executive supporting children in need.



Progress Seminar Presenters



Jeff Schwob

Community Development Director, City of Redwood City

Jeff Schwob was appointed to his position as Community Development Director in 2023, after serving as Interim Director. He has over 30 years of experience in the Bay Area. Jeff's career began in the County of Alameda, with progressively responsible experience in San Rafael, Santa Rosa, and Fremont, where he served as Community Development Director. Since 2018, he has continued his public service with interim assignments, including as Interim Community Development Director for Walnut Creek and most recently, holding the same position in Redwood City. Throughout his career, Jeff has earned widespread recognition for his ingenuity as a creative problem solver, his exceptional managerial skills, and his role as a mentor dedicated to fostering talent and continuous improvement. He has particular strengths in urban planning, architectural design, and public engagement, and broad experience in all aspects of community development.



Betsy Scully Ricketts

Vice President, Policy, Government and Public Affairs, Ultragenyx

Betsy Ricketts is the Vice President of Policy, Government Affairs and Public Policy for Ultragenyx Pharmaceutical based in Novato. Betsy manages all international, federal, state and local government affairs and public policy efforts on behalf of the company committed to bringing to patients novel products for the treatment of rare and ultra-rare diseases, with a focus on serious, debilitating genetic diseases.

Over the last 20 years, Betsy has advocated for both small business owners and Fortune 50 corporations in developing and managing policies, programs and political activities in Northern California, in over 25 states and in Washington D.C.

Betsy Ricketts graduated with double majors in Business Marketing and Journalism Public Relations at Colorado State University.



Nell Selander

Economic & Community Development Director, City of South San Francisco

Nell Selander serves as the Economic & Community Development Director with the City of South San Francisco where she oversees the City's Building, Planning, Housing, and Economic Development functions. Beyond entitling and permitting projects, funding and monitoring affordable housing, and supporting the City's business community, the Department is also charged with winding down the City's former Redevelopment Agency, administering its federal Community Development Block Grant, and managing the North San Mateo County Economic Advancement Center.

Before joining the City of South San Francisco, Nell served as Economic Development & Housing Manager with the City of San Carlos and prior to that worked on various, large capital projects and economic development initiatives for the Columbus Downtown Development Corporation in Columbus, Ohio.

Nell received her BA from Stanford University and Masters of Urban Planning from New York University's Graduate School of Public Service.



Marléna Sessions

Executive Director, NOVAworks

Marléna Sessions began serving as Director of NOVAworks in November 2021 and additionally serves as the NOVAworks Launch Lab President. Marléna previously served as Chief Executive Officer for the Workforce Development Council of Seattle King County from 2009-2017, and as the Director of the San Bernardino County Workforce Development Board in 2020-2021.

Marléna currently serves on the John J. Heldrich School of Workforce Development National Advisory Committee at Rutgers University. She also serves on the "Higher Education Research Informing Excellence" advisory board for California Competes. She is a member of the "Stanford Next" Advisory Council. Marléna is an Executive Committee member of the California Workforce Association.

She has long advocated for career pathways and self-sufficiency for all and strategic talent pipeline development for all industries. She has testified in front of the U.S. Senate and House multiple times on these issues.

Marléna holds a Bachelor's Degree from Whitworth University and a Master of Arts in Organizational Leadership from Gonzaga University.

Progress Seminar Presenters



Nicole Taylor
President and CEO, Silicon Valley Community Foundation

Nicole Taylor is president and CEO of Silicon Valley Community Foundation (SVCF). SVCF is the world's largest community foundation, with an average of \$2 billion in annual grantmaking and a deep commitment to solving its region's toughest challenges through advocacy, research, policy and grantmaking.

Since joining in 2018, Nicole has led the organization to renew its focus on challenges facing Silicon Valley's residents. She has championed efforts to increase local giving from SVCF donors and to help them be effective philanthropists. Prior to SVCF, Nicole served in executive roles at Arizona State University, Stanford University, College Track, Thrive Foundation for Youth and East Bay Community Foundation.

She served on the board of the Federal Reserve Bank of San Francisco and is currently a board member for Common Sense Media, Carnegie Foundation for the Advancement of Teaching, and Top Hat. Nicole received both her M.A. and A.B. from Stanford University and began her career as an educator.



Chris Waugh
Chief Innovation Officer, Sutter Health

As Sutter Health's first Chief Innovation Officer, Chris Waugh applies his extensive experience in human-centered design to guide the integrated network's innovation strategy. Human-centered design is a creative approach that seeks personalized solutions to meet individual needs — understanding people and their behaviors, identifying trends and exploring solutions that improve a person's healthcare experience — in order to make healthcare more usable and accessible for patients, doctors and nurses. At Sutter, Waugh has spearheaded the digital transformation of healthcare and the implementation of Tera — a virtual-first medical practice which aims to best resolve issues before patients have to schedule an in-person appointment. This work is driven by the idea that healthcare should fit into the patient's life, and not the other way around.

Before joining Sutter Health, Waugh held entrepreneurial leadership roles at IDEO, a globally regarded Bay Area design and innovation firm, and was vice president of design at One Medical Group in San Francisco where he helped create a culture of innovation

2025 Annual Report

Scan the QR code to Read Chamber San Mateo County's 2025 Annual Report.



Progress Seminar
photography courtesy of



About the Chamber

Our Purpose

We support businesses and everyone they serve to build a brighter future for San Mateo County.

Our Promise

We are the forum where business voices are heard, engaged, supported, and elevated.

Our Difference

The Chamber uses effective engagement, diverse perspectives, and strong leadership to be a collaborative force in San Mateo County.

Our Priorities

- Serving and supporting members
- Understanding and shaping political environment
- Developing and using our regional influence
- Advocacy efforts for priority issues

We Proudly Represent:



Our Core Programs



Our Policy Committees



Our Collaborating Partners



2026 Board of Directors

Executive Officers



Chair of the Board

Aaron Aknin, Principal & Co-Owner,
Good City Company



Vice Chair

Economic Development
Simon North, Principal/Vice
President, BKF Engineers



Vice Chair

**Membership Services,
Funding & Communications**
Manuel Martinez, Owner,
LV Mar & La Viga



Vice Chair

Community Development
Dr. Jamillah Moore, Vice President,
Student Affairs & Enrollment
Management, SFSU



Vice Chair

Governmental Relations
Don Cecil, Principal, MC² Bay
Area Public & Government
Affairs Consulting



Chief Financial Officer

Bill Graham,
Health Care Consultant



Deputy Chair

Rosanne Foust, President & CEO,
San Mateo County Economic
Development Association (SAMCEDA)



Past Chair of the Board

Lennies Gutierrez, Government
Affairs Strategist



President & CEO

Amy Buckmaster, President & CEO,
Chamber San Mateo County

Directors

Diana Bautista, Stanford Medicine Children's
Health

Evan Boyd, Recology Inc.

April Chan, San Mateo County Transit District

Leah Cowan, Sutter Health

John Fong, Kenson Ventures

Samantha Friesz, Google

Greg Greenway, Seaport Industrial Association

Dawn Jedkins, DES Architects & Engineers

Clay Jones, Heritage Bank of Commerce

Ellen Kamei, Foothill/De Anza Community
College District

Yayu Lin, Commercial Development +
Advisory, Sares Regis Group of Northern
California

Julie Lind, San Mateo Labor Council

Rhovy Lyn Antonio, California
Apartment Association

Elmer Martinez Saballos, LifeMoves

Kate Mosley, OrangeTheory Fitness
Redwood City

Seamus Murphy, WETA

Mark Murray, Lane Partners

Charles Stone, Goethals & Stone, PC

Robert Tersini, The Sobrato Organization

Vincent Way, Graniterock

Jason Webb, Chan Zuckerberg Initiative

Chris Weber, Oracle Corporation

Lucy Wicks, Stanford University

Moses Zapien, Silicon Valley Community
Foundation

Kristine Zortman, Port of Redwood City



Past Chair's Council

Jim Hartnett, HJSR Solutions LLC
(1995 & 2002)

Dani Gasparini, Hotel Sequoia (1997)

Alyn Beals, Beals Martin, Inc. (2001 & 2010)

Jeff Gee, Swinerton Management & Consulting
(2008)

Ben Paul, Cushman and Wakefield (2011)

Stacey Wagner, Kaiser Permanente
(2012 & 2013)

Steve Elliott, Stanford University (2016 & 2017)

Mario Rendon, Office of Congressman Kevin
Mullin (2020 & 2021)

Peter Tsai, Cadence Investments (2022)

Chamber Team

Felicia Basques, Director of Administration

Allison Follett, Operations & Programs
Coordinator





Kaiser Permanente NCAL's Medicare and commercial health plans are the highest rated in California, according to the NCQA, an independent, non-profit that improves health care quality by accrediting health plans, medical groups, and providers.

We received 5 out of 5 stars on the 2025 National Committee for Quality Assurance Health Plan Ratings.

Kaiser Permanente is a long-time supporter of Chamber San Mateo County's Annual Progress Seminar!

A better idea for health care

Visit kp.org today



GRAB YOUR
\$475

New Business Account Bonus*

Join Provident for better dividends, no fees, and unlimited transactions and deposits.

To earn your bonus, simply do these three things for two months, starting the month following your account opening:

- 1) Deposit \$2,500 to your account within the first 60 days.
- 2) Make purchases of \$400 or more
- 3) Enroll in online banking and e-Documents with a valid email address

GET YOUR BONUS
Use promo code
SEED475



providentcu.org/bonusbusiness | (800) 632-4600

* You must be a new business member. You are not eligible if you are a current owner on a Provident Credit Union business account or if you have been an owner on a Provident Credit Union business account within the last two years. You can receive only one New Business Account Bonus per business. To be eligible, you must open a Dividend Business Checking Account. New Business Account Bonus offer may expire anytime. The minimum balance for the Business Membership Savings account is \$5.00. You must fund your Business Checking account within the first 60 days of account opening with a minimum deposit of \$100. If you fail to fund your Checking account within the first 60 days you are no longer eligible for the New Business Account Bonus and your account(s) will be closed. In order to qualify for your New Business Account Bonus your account must be active and in good standing for two consecutive months following the month that your Dividend Business Checking account is opened. All qualifying purchases and transactions referred to as "per month" or "monthly" only count towards the requirement of the month in which they POST, which will be on a business day (Monday – Friday) and may take one or more business days from the purchase/transaction date. Your account is deemed eligible by: (a) making purchases of \$400 or more using a debit and/or credit card per month, AND (b) making \$2,500 in total deposits to your Dividend Business Checking Account within 60 days of account opening, AND (c) enrolling in Provident's online banking service and e-Documents with valid email address. If your account remains inactive after 90 days from account opening you are no longer eligible for the New Business Account Bonus. Your account is in good standing if you: (a) demonstrate responsible account management—such as making regular deposits to bring your account to a positive end of day balance at least once every 30 days (including the payment of all credit union fees and charges); (b) avoid excessive overdrafts; (c) there are no legal orders, levies or liens against your account. New Business Account Bonus: The New Business Account Bonus will typically be credited to your Provident Credit Union Dividend Business Checking account within 120 days of account opening. We may report the value of the New Business Account Bonus to the IRS and any applicable taxes are the responsibility of the member. The minimum deposit to open a Dividend Business Checking account is \$100.00. Business Savings account required to open a Dividend Business Checking account. Automatic or electronic payments using your checking account and routing number are not considered purchases. By providing your payee with your debit or credit card number, your posted automatic payments will be counted as eligible purchases. Some bill payments will meet the monthly requirement for an ACH debit or credit transaction. Debit card cashback amounts, cash advances on credit cards, and checks do not count towards qualifications. 04/2026



This credit union is federally insured by the National Credit Union Administration





Community is at the heart of all we do.

Bringing people together for the greater good – that’s where transformation happens.

We are proud to support Chamber San Mateo County’s Progress Seminar so that together we can help create a more equitable community.



svcf.org



Homegrown Success

Local Banking,
Built for Local Business



BUSINESS LOANS AND DEPOSIT ACCOUNTS

Your business is rooted in the community—planted, nurtured, and grown right here. At Monterra Credit Union, we’re here to help you keep your finances healthy so you can stay focused on growing your success. Our banking solutions provide you with everything needed to flourish including:

- **Business Checking Accounts (Premier, Basic, and Nonprofit)**
- **Business Savings, Money Market & Certificate Accounts**
- **Business Debit & Credit Cards**
- **Business Lines of Credit, Auto Loans, and Term Loans**
- **Commercial Real Estate Loans**
- **Business Digital Banking & Cash Management Solutions**
- **Merchant Services, Payroll & ACH**
- *And more!*

Introductory APR as low as 1.99%APR* for 12 months on purchase transactions. Open a Business Rewards Visa® credit card today!



Plant the seeds of success from here.

Scan the QR code or visit monterra.org/business to get started today.

*APR = Annual Percentage Rate. Introductory offers carry conditions and can change without notice. Conditions and restrictions apply. Federally insured by NCUA.
© 2026 Monterra Credit Union

**THE
SAN FRANCISCO**
Peninsula

It's
Kind Of
WILD



**THAT WE HAVE OVER 80+ CULINARY TRADITIONS
REPRESENTED ON THE PENINSULA**

Join our regional Chambers, SAMCEDA and the SFP in our multi-year celebration of culinary excellence and exploration. Three events in 2026 (and beyond) will spotlight and celebrate our diverse chefs and culinary offerings to the world.



A 10-day culinary celebration, spanning Bayside to Coastside. Enjoy specially curated prix-fixe menus from over 120 local restaurants.

April 23-May 3, 2026
January 21-31, 2027



All-inclusive walk-around feast features thoughtful bites prepared by some of our most critically acclaimed kitchens, with products from locally sourced farms and sponsors. After indulging in each dish, over 800+ guests will vote for their favorite bite of the day.

July 26 - Coyote Point
San Mateo



One of the largest whiskey-tasting events in the U.S., Whiskies of the World brings together more than 200 spirits from across the globe — single malts, scotch, bourbons, and craft and small-batch distilleries — alongside the makers and curious explorers.

August 26 - HMB Brewing Co.
Half Moon Bay

For more: www.thesanfranciscopeninsula.com > Events

Stanford is proud to call the Bay Area home

We work to ensure that our teaching, research, patient care, and operations drive positive impact, locally and globally. We value nurturing existing relationships and forging new ones in support of thriving communities.

Contributing to the Region

Learn more about Stanford's economic and social impact in the region.

regionalimpact.stanford.edu

StanfordNext

Planning for Stanford's future needs on our existing academic campus lands.

next.stanford.edu

Stanford Medicine Cancer Center: Redwood City Project

Reimagining cancer innovation and care.

redwoodcity.stanfordmedicine.org

Transportation Programs

Providing sustainable ways to get to, from, and around campus.

transportation.stanford.edu

Sustainability at Stanford

Cultivating deep knowledge and high-impact solutions to pressing planetary challenges.

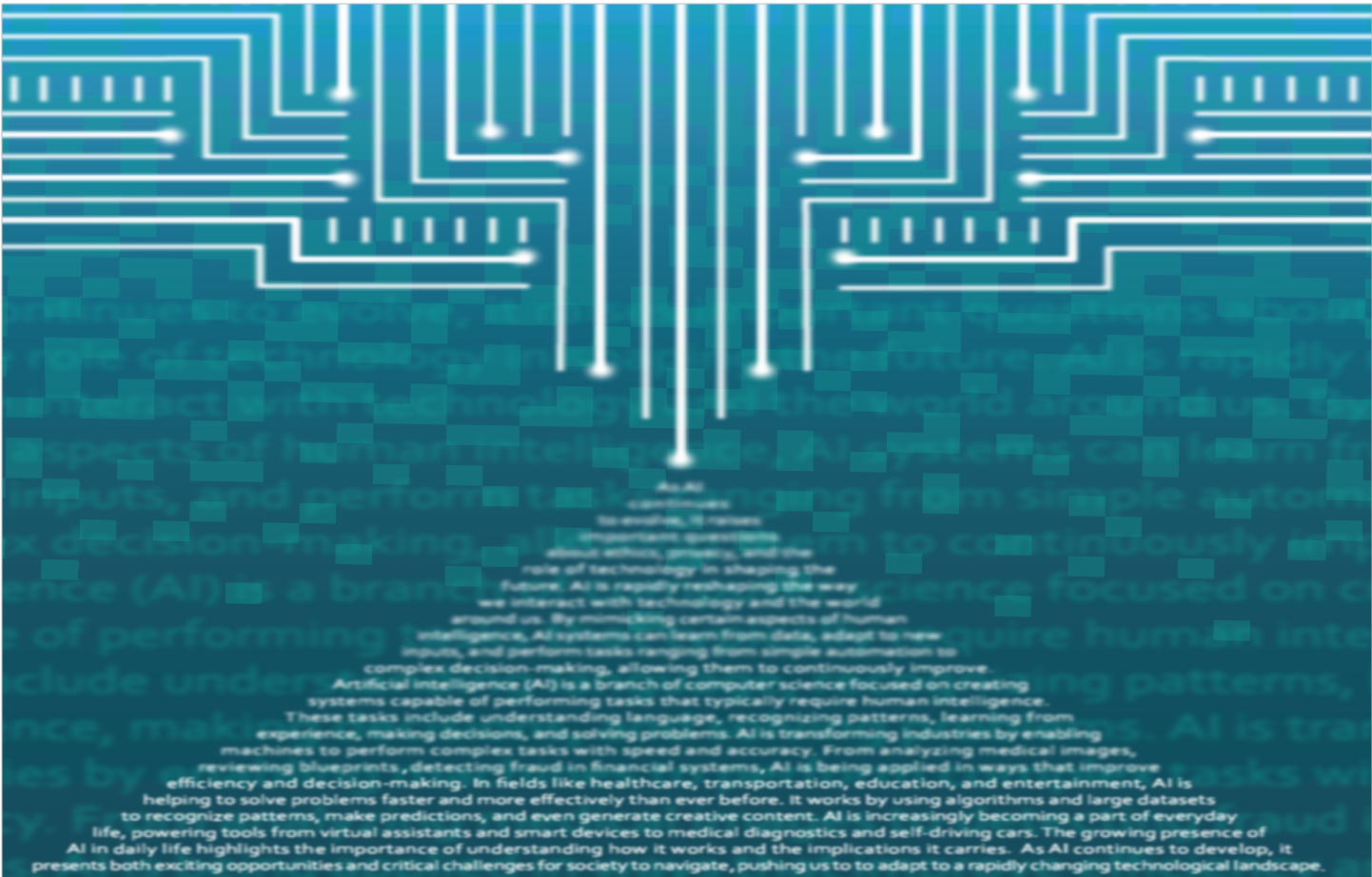
sustainable.stanford.edu/progress

Stanford's Commitment to Housing

Contributing to solutions to our region's housing challenges.

housinginfo.stanford.edu





SAMCEDA

San Mateo County Economic Development Association

[WWW.SAMCEDA.ORG | INFO@SAMCEDA.ORG]

SCAN TO LEARN MORE



bit.ly/3Q4rXGe

Since 1953, the San Mateo County Economic Development Association (SAMCEDA) has been a leading voice for the economic engine that is San Mateo County. Representing a powerful contingent of leading Bay Area businesses, institutions, organizations and entrepreneurs, SAMCEDA is recognized for its experienced, impact-driven approach as a business advocacy organization.

- Hear from industry experts and thought-leaders
- Stay on top with current updates and announcements, article insights, grant/fellowship/career advancement opportunities, and business resource/tools
- Get regional reports specific to San Mateo County
- And more!

With the rise of Artificial Intelligence (AI), we aimed to capture this moment in time through a graphic symbolizing AI. To learn more about the graphic, please visit : samceda.org/samceda-annual-update.



Comcast Business. Powering Possibilities.™

Comcast Business offers advanced, scalable solutions for small businesses with fast and reliable speeds and 24/7 customer support. With tailored solutions like advanced cybersecurity to help protect your network, Comcast Business connectivity and Wireless Connect designed for 100% reliability, and the most reliable WiFi with our best equipment, no one does business like Comcast Business.

Visit comcastbusiness.com to learn more.

COMCAST BUSINESS

Restrictions apply. Not available in all areas. Wireless Connect requires Comcast Business Internet and compatible leased router for additional monthly charges. Depending on battery option selected, fully charged battery backup will provide up to 8-16 hours of power to the Wireless Connect device. Actual backup time varies depending on number of connected devices and is not guaranteed. Most reliable WiFi based on Opensignal Awards USA: Fixed Broadband Experience Report, May 2025. ©2026 Comcast.



PG&E is committed to:

SERVING PEOPLE,
THE PLANET
AND CALIFORNIA'S PROSPERITY



[Learn more](#)

©2025 Pacific Gas and Electric Company. All rights reserved.

LEADERSHIP

Redwood City Belmont San Carlos Menlo Park

**Registration is Open for the
2026-2027 Leadership Class**
[Apply Today at www.chambersmc.org](http://www.chambersmc.org)

As a Leadership program participant, you will deepen your understanding of the community through direct engagement with influential local leaders while gaining valuable insights and resources for your professional and civic growth. You'll also become part of a network of 1,500+ alumni, connecting you with professionals and leaders across all sectors of San Mateo County.





Caring for our community never stops.

Proud to sponsor Progress Seminar.

sutterhealth.org





INTRODUCING

Instagram Teen Accounts

Automatic protections for who
can contact them and the content
they can see



Account privacy



Who can interact with them



What they can see



Time management



Learn more at [instagram.com/TeenAccounts](https://www.instagram.com/TeenAccounts)

The **SOBRATO** Organization

Building a Strong and Vibrant
Silicon Valley Community
through Business and
Philanthropic Leadership



A proud member of the Redwood City
community for more than 40 years.

Helping our community recycle today for a better tomorrow.

Visit www.simsmm.com to learn more
about us and our sustainability efforts.



California Apartment Association
is proud to support the
2026 Progress Seminar
and the partnerships shaping
solutions to our region's
important challenges.

www.caanet.org

CELEBRATING 50 YEARS OF EXCELLENCE IN TRANSPORTATION



samtrans.com

GOOD
LEADS
THE
WAY[®]

©2024 United Airlines, Inc. All rights reserved.



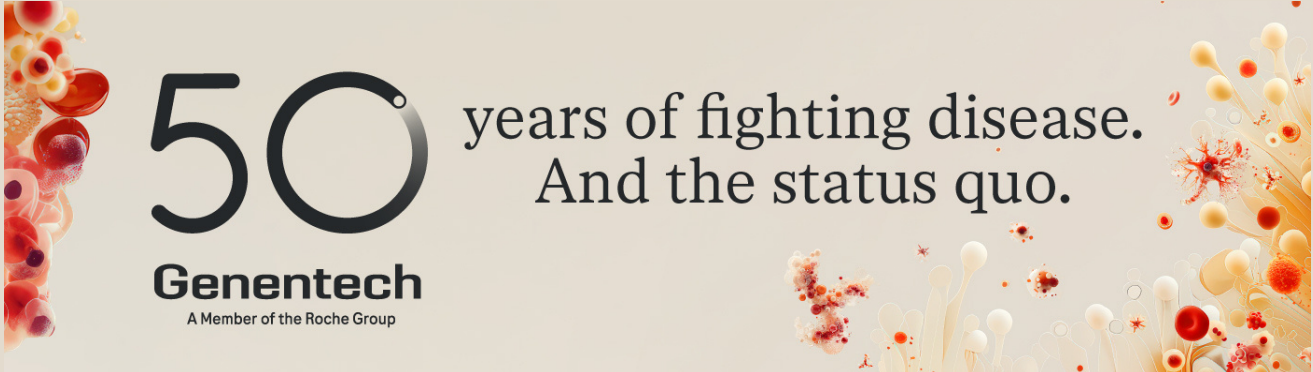
UNITED



A STAR ALLIANCE MEMBER

Genentech

A Member of the Roche Group



Thank you, San Mateo County, for being our home over the last 50 years!

With the transformation of our South San Francisco campus, Genentech is excited to drive the next revolution in human health.

Scan the QR code to learn more.

