



# CHAMBER SAN MATEO COUNTY PROGRESS SEMINAR

BUSINESS • GOVERNMENT • LABOR • EDUCATION

Hyatt Regency Sonoma Wine Country  
April 19-21, 2024



Printed Program Sponsors



IMAGINE

# A World Without Waste

We're not just adapting to a sustainable future—we're actively shaping it.

Last year alone, we composted over 684,000 tons of organics at our eight processing facilities. By keeping waste out of landfills, we're serving the circular economy and contributing to a healthier planet—delivering valuable nutrients back to the earth and the food we eat.



Learn more at  
[Recology.com/Sustainability](https://www.Recology.com/Sustainability)





# Letter from Chamber San Mateo County Leaders and Progress Seminar Co-Chairs

Welcome to the Progress Seminar! This is our 55th year in presenting this seminal program to convene the region's thought leaders and decision-makers to tackle some of our community's lasting problems and explore possibilities to harness eminent opportunities to continue to make San Mateo County a great place to work, live and visit. This Progress Seminar is where business, government, labor and education are represented by a dynamic mix of nearly 300 attendees from all communities of San Mateo County.

Our planning team has worked diligently to craft an agenda and highlight topics that are top-of-mind, impactful and in need of a broader community conversation to frame a future that not only surfaces inequities and mitigates potential risks but also leverages possibilities and opportunities. As an attendee this year, you will have an opportunity to learn more about and discuss topics such as strengthening democracy, philanthropy, federal funding, artificial intelligence, and the need for strong transit systems.

Our goal is to leave you and all attendees with fresh ideas, newfound partnerships, and revitalized energy that drive improved public policy, stronger alliances, and a culture of listening, understanding and collaboration. This happens because there is no other county that brings people together in a forum like the Progress Seminar and fosters a positive approach to accomplishing collective goals.

As our region continues to adjust to new economic, workforce, political, social, cultural and environmental realities, Chamber San Mateo County, through the Progress Seminar and its other programs, is excited to continue its role in helping shape our collective future. The Chamber embraces this mantle with enthusiasm, focus and a spirit of collaboration and with an eye on meaningful results for our community.

We hope you find the 2024 Progress Seminar to be informative, thought-provoking and a supportive resource in your community leadership role. If there is anything we can do to make your experience more rewarding or enjoyable, please let us know.

Sincerely,



**Rosanne Foust**

Progress Seminar Co-Chair  
President & CEO, San Mateo County Economic Development Association (SAMCEDA)



**Julie Lind**

Progress Seminar Co-Chair  
Executive Secretary-Treasurer, San Mateo Labor Council



**Mike Callagy**

Progress Seminar Co-Chair  
County Executive Officer, County of San Mateo



**Dr. Jamillah Moore**

Progress Seminar Co-Chair  
Vice President of Student Affairs and Enrollment Management, San Francisco State University



**Lennies Gutierrez**

Chair of the Board, Chamber San Mateo County  
Director of Government Affairs, Comcast



**Amy Buckmaster**

President & CEO, Chamber San Mateo County

# Thank You to Our Sponsors!

## Principal Sponsors



## Saturday Night Soiree Sponsor



## Premier Sponsors



## General Session Sponsors



## Program Sponsors



## Media Sponsors



## Badge Sponsor



## Mid-Morning Break Sponsor



## Corporate Sponsors





# Schedule of Events

## Friday, April 19

Time	Event	Location
4:00pm – 6:00pm	Registration	Alexander Valley Foyer
6:00pm – 9:00pm	Welcome Reception and Dinner	Knights Valley Garden

## Saturday, April 20

Time	Event	Location
7:30am – 8:30am	Registration	Alexander Valley Foyer
7:45am – 9:30am	Opening General Session and Breakfast	Alexander Valley Ballroom
9:40am – 10:30am	Session 1 (Breakouts A – D)	See session descriptions on pages 6-8
10:30am – 11:20am	Session 2 (Breakouts A – D)	
11:20am – 11:30am	Mid-morning Break	Alexander Valley Foyer
11:30am – 12:20pm	Session 3 (Breakouts A – D)	See session descriptions on pages 6-8
12:20pm – 1:10pm	Session 4 (Breakouts A – D)	
1:10pm – 2:45pm	Luncheon General Session	Alexander Valley Ballroom
2:45pm – 6:00pm	Unscheduled Time – Networking	
6:00pm – 7:00pm	Reception	Sonoma Valley Courtyard
7:00pm – 8:30pm	Soiree and Dinner	Alexander Valley Ballroom

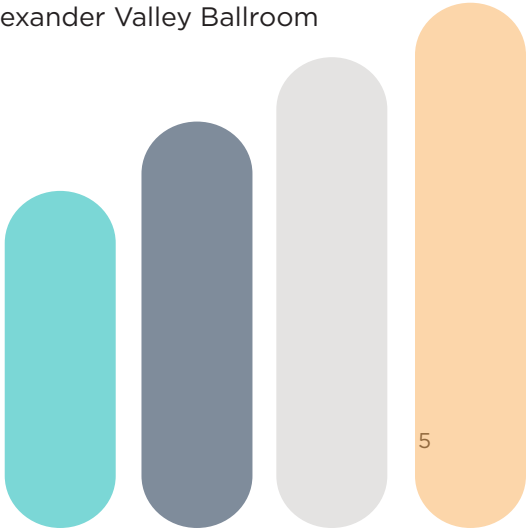
## Sunday, April 21

Time	Event	Location
8:30am – 11:00am	Closing General Session and Breakfast	Alexander Valley Ballroom

### Throughout the Progress Seminar

Visit the Frontier Energy Food Service Technology Center, which will demystify induction cooktops with a demonstration designed to explain induction cooking and highlight the benefits of this efficient electric technology.

Location: Russian River Valley I



# Session Descriptions

## Opening General Session

### State of Philanthropy in Silicon Valley: A Conversation with Nicole Taylor, President & CEO, Silicon Valley Community Foundation

Location: Alexander Valley Ballroom

#### Moderators

- Rosanne Foust, President & CEO, SAMCEDA and Progress Seminar Co-Chair
- Dr. Jamillah Moore, Vice President of Student Affairs and Enrollment Management, San Francisco State University and Progress Seminar Co-Chair

## Breakout Session A

### Strengthening Democracy: Country and Community

Location: Alexander Valley Ballroom III

According to the Center for Revitalizing American Institutions at Stanford's Hoover Institution, the heart of representative government is the role of individuals in their relationships with democratic institutions and practices at all levels of government. As such, one component of this theme will be work on public opinion and behavior, including on electoral accountability – both for candidates and voters alike. Additionally, it will be concerned with the development of individuals' commitments to constitutional democracy, their understanding of the rights and responsibilities of American citizenship, and preparing individuals for informed, active, and ethical participation in democratic processes.

In this session, participants will examine the challenges facing our democracy, its institutions, processes and practices, and will explore strategies to mitigate and reverse negative trends that threaten the longevity of our democratic values at local and national levels.

#### Panelists

- Rafael Avendaño, Executive Director, Redwood City Together
- Thomas J. Schnaubelt, Assistant Director, Hoover Institution Center for Revitalizing American Institutions Stanford University
- Mark Simon, Columnist, San Mateo Daily Journal
- Catherine Lew, Esq, Principal, The Lew Edwards Group

#### Moderators

- Mitchell Bailey, Owner & Principal Consultant, MBailey Advisors, LLC (Sessions 1 & 2)
- Lennies Gutierrez, Chair of the Board, Chamber San Mateo County, and Director of Government Affairs, Comcast (Sessions 3 & 4)

## Breakout Session B

### Everyone Works from Home...Why We Still Need Strong Transit Systems

Location: Alexander Valley Ballroom IV

The COVID-19 pandemic changed how Bay Area residents live, work, and travel. It hit public transit systems hard, decimating transit ridership and the transit fare revenue we rely on to keep trains running.

We are in an unprecedented moment, with the survival of public transit at risk. While many workers, students, and neighbors who depend on public transit continue to ride, including many from underrepresented communities with less economic and political capital, others have returned to transit more slowly and less frequently. The Bay Area has the highest work-from-home rates in the nation, and the slowest downtown recovery, resulting in fewer commute trips.

Public transit agencies are now running services using one-time federal emergency funds that will run out in 2025/2026. Even with belt-tightening, we can't cut our way out of the crisis. That is because transit has high fixed costs to maintain our infrastructure and low marginal costs driven by changes in service.

In this session, participants will examine the challenges facing public transit systems, the equity imperative for ensuring a vibrant and sustainable public transit option for residents, and the fiscal realities that we must confront as a region to not only strengthen but grow our public transit networks.

#### Panelists

- Kristine A. Zortman, Executive Director, Port of Redwood City
- Casey Fromson, Chief of Staff, Caltrain
- Jessica Epstein, Director, Government and Community Affairs, San Mateo County Transit District

#### Moderators

- Don Cecil, Principal, MC2 Bay Area Public & Government Affairs Consulting (Sessions 1 & 2)
- Gina Papan, Councilmember, City of Millbrae and Metropolitan Transportation Commission (Sessions 3 & 4)

# Session Descriptions (Continued)

## Breakout Session C

### Why is Artificial Intelligence (AI) a Positive?

Location: Dry Creek Valley Ballroom I

Marc Benioff, CEO of Salesforce, recently praised the Bay Area (San Francisco) as the world's "Number One A.I. city," highlighting its growing AI scene and the presence of innovative startups. This sentiment is echoed by other tech leaders and entrepreneurs who are drawn to the San Francisco Bay Area's unique intellectual community and the advantages it offers for startup success. The city's reputation as a prime location for AI innovation continues to attract attention and investment from the tech industry.

In this session, participants will discuss the evolving potential of AI with the realities of its use, governance and threats, and how the continued realities of an AI-influenced world could be cradled in the San Francisco Bay Area.

#### Panelists

- Ray Mueller, Supervisor, San Mateo County
- Annie Tsai, Chief Operating Officer, Interact and Columnist, San Mateo Daily Journal
- Vishal Verma, Edgewood Ventures LLC

#### Moderators

- Jim Hartnett, CEO, HJSR Solutions LLC (Sessions 1 & 2)
- Rosanne Foust, President & CEO, SAMCEDA and Progress Seminar Co-Chair (Sessions 3 & 4)

## Breakout Session D

### Follow the Federal Dollars – Funding our Local Future

Location: Dry Creek Valley Ballroom II

Over the last few years, President Biden has proposed, and the U.S. Congress has passed, several significant pieces of legislation that invest in America's people, its cities, infrastructure and natural environment, through the American Rescue Plan (2021), the Infrastructure Investment and Jobs Act (2021) and the Inflation Reduction Act of 2022. This portfolio of legislation positions America to be more competitive globally, and enhances the health, welfare and prosperity of American families while rebuilding our aging infrastructure and combatting climate change. Each community in America stands to benefit from the funding, projects and initiatives in these bills, and for the Bay Area, these federal dollars are going to be critical to securing our future, protecting our residents and creating an environment for workers and families to thrive.

In this session, participants will explore ways in which San Mateo County and the Bay Area have established successful models of regional entities intended to tackle major infrastructure, sustainability, climate, and other policy challenges. For example, the San Francisco Bay Restoration Authority, One Shoreline, Peninsula Clean Energy, transit infrastructure, efforts related to workforce development and expanding apprenticeships programs, and many more examples. Yet these worthy efforts have often lacked adequate funding. San Mateo County is now poised to benefit from these large federal funding programs if we work regionally and cooperatively to get our fair share.

#### Panelists

- Dave Pine, Supervisor, San Mateo County
- Emily Douglas, Regional Director, Engie
- Van Ton Quinlivan, CEO, Futuro Health

#### Moderators

- Marlena Sessions, Executive Director, NOVAworks (Sessions 1 & 2)
- Shawn Marshall, CEO, Peninsula Clean Energy (Sessions 3 & 4)





# Session Descriptions (Continued)

## Luncheon General Session

### Understanding Healthcare San Mateo County: Connecting, Collaborating and Caring

#### Panelists

- Dr. Kismet Baldwin-Santana, Health Officer, San Mateo County Health
- Dr. Edward Kao, Physician in Chief, Kaiser Permanente
- Dr. Lisa Chamberlain, MPH, Professor of Pediatrics, Stanford School of Medicine

#### Moderators

- Mike Callagy, County Executive Officer, San Mateo County
- Diane Papan, Assemblymember, California Assembly

## Closing General Session

### Candidate Forums for California 16th Congressional District and San Mateo County 4th Supervisorial District

#### California 16th Congressional District Candidates\*

- Sam Liccardo, former Mayor of San Jose
- Joe Simitian, Supervisor, Santa Clara County
- Evan Low, Assemblymember, California Assembly

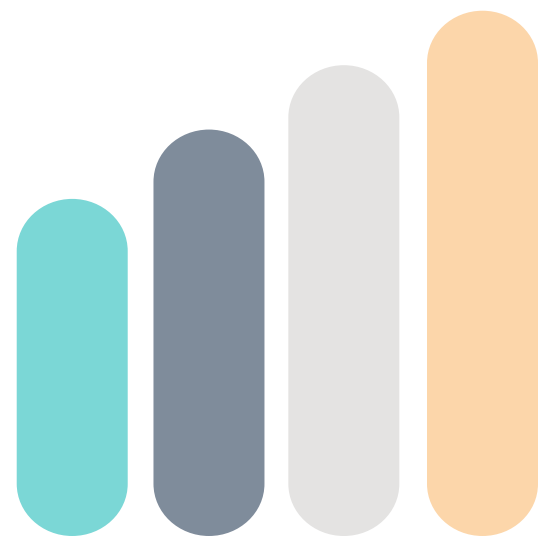
#### San Mateo County 4th Supervisorial District

- Lisa Gauthier, Councilmember, City of East Palo Alto
- Antonio Lopez, Mayor, City of East Palo Alto

#### Moderators

- Rosanne Foust, President & CEO, SAMCEDA and Progress Seminar Co-Chair
- Julie Lind, Executive Officer/Executive Secretary-Treasurer, San Mateo County Central Labor Council and Progress Seminar Co-Chair

\*As of the time of printing of this program, there are three candidate who have qualified for the general election ballot for this race. All three candidates have been invited to participate in this candidate forum. Should circumstances change regarding the general election qualifications, adjustments will be made accordingly.



# Progress Seminar Attendees

**Note:** Names in **bold, teal** signify a Chamber San Mateo County Board Member. Names in **bold, black** signify a first-time Progress Seminar attendee.

Name	Title	Representing
Alicia Aguirre	Councilmember	City of Redwood City
<b>Aaron Aknin</b>	<b>Partner</b>	<b>Good City Company</b>
Adam Alberti	Managing Director	Singer Associates
Valerie Alsip	Executive Vice President, Chief Operating Officer	Monterra Credit Union
Tom Ames	Board of Directors	San Mateo County Event Center
J.D. Anagnostou	Development Acquisitions	RealSmart Properties
<b>Amanda Anthony</b>	<b>Economic Development Manager</b>	<b>City of Redwood City</b>
<b>Alex Arnold</b>	<b>Manager of Programs and Marketing</b>	<b>Chamber San Mateo County</b>
<b>Ana Avendaño</b>	<b>Executive Director</b>	<b>El Concilio of San Mateo County</b>
<b>Rafael Avendaño</b>	<b>Executive Director</b>	<b>Redwood City Together</b>
<b>Mitchell Bailey</b>	<b>Owner &amp; Principal Consultant</b>	<b>MBailey Advisors, LLC</b>
<b>Dr. Kismet Baldwin-Santana</b>	<b>Health Officer</b>	<b>San Mateo County Health</b>
Felicia Basques	Operations Manager	Chamber San Mateo County
Diana Bautista	Government Relations Manager	Lucile Packard Children's Hospital
Emily Beach	Vice Mayor	City of Burlingame
<b>Kelly Beggs</b>	<b>Principal Planner</b>	<b>Good City Company</b>
<b>Kristina Bell</b>	<b>Chief of Police</b>	<b>Redwood City Police Department</b>
Laura Bent	Chief Executive Officer	Samaritan House
Lauren Berman	Project Manager	BKF Engineers
<b>Chris Bernhardt</b>	<b>Senior Management Analyst</b>	<b>NOVAworks</b>
<b>Eric Bet</b>	<b>Associate Principal</b>	<b>Lane Partners</b>
Tygarjas Bigstyk	Councilmember	City of Pacifica
<b>Christine Boles</b>	<b>Councilmember</b>	<b>City of Pacifica</b>
<b>Glen Bongi</b>	<b>General Manager</b>	<b>Recology of the Coast</b>
<b>Ronaldo Bonilla</b>	<b>Chief Strategy Officer</b>	<b>Voler Strategic Advisors</b>
<b>Evan Boyd</b>	<b>Vice President and Regional Manager</b>	<b>Recology, Inc.</b>
Elaine Breeze	Senior Vice President	SummerHill Apartment Communities
<b>Amy Buckmaster</b>	<b>President and Chief Executive Officer</b>	<b>Chamber San Mateo County</b>
David Buckmaster	Airport Account Executive	Salesforce Marketing Cloud
Mitch Bull	Economic Development Director	City of Brisbane
<b>Melissa Burke</b>	<b>Director Community Relations</b>	<b>Lucile Packard Children's Hospital</b>
David Burruto	District Director	Office of Assemblymember Diane Papan
Bill Butler	Chief Executive Officer	W.L. Butler Construction
Elliott Butler	Business Development Manager	W.L. Butler Construction
Joel Butler	Vice President of Pre-Construction	W.L. Butler Construction
<b>Clarrissa Cabansagan</b>	<b>Executive Director</b>	<b>Silicon Valley Bicycle Coalition</b>
Angelina Cahalan	Councilmember	City of Millbrae
Mike Callagy	County Executive, Progress Seminar Co-Chair	County of San Mateo
Alex Campomanes	Senior Project Manager	Longfellow Real Estate Partners
<b>Gustavo Castillo</b>	<b>Community Relations Manager</b>	<b>Monterra Credit Union</b>
<b>Don Cecil</b>	<b>Principal</b>	<b>MC2 Bay Area Public &amp; Government Affairs Consulting</b>

# Progress Seminar Attendees

Name	Title	Representing
<b>Dr. Lisa Chamberlain</b>	<b>Professor of Pediatrics</b>	<b>Stanford University</b>
<b>April Chan</b>	<b>General Manager/Chief Executive Officer</b>	<b>San Mateo County Transit District</b>
Virginia Chang Kiraly	Commissioner	San Mateo County Harbor District
Bill Chiang	Local Government Affairs	Pacific Gas & Electric
Noah Christman	Partner	Lighthouse Public Affairs
Heather Cleary	Chief Executive Officer	Peninsula Family Service
Jim Cogan	Strategic Partner	Unite Strategies
James Coleman	Mayor	City of South San Francisco
Ron Collins	Councilmember	City of San Carlos
Kate Comfort Harr	Executive Director	HIP Housing, Inc.
Noelia Corzo	Supervisor	County of San Mateo
<b>Leah Cowan</b>	<b>Government Affairs Manager</b>	<b>Sutter Health</b>
Terrie Crenshaw	Employer Engagement Liaison	JobTrain
<b>Eric Cruz</b>	<b>Business Development</b>	<b>Comcast</b>
<b>Danielle Cwirko-Godycki</b>	<b>Recruiter, Amazon</b>	<b>San Mateo City Council Candidate</b>
<b>Vikki Davis</b>	<b>Chief Human Resources Officer</b>	<b>Peninsula Family Service</b>
Mitzy De La Pena Medina	Associate Director of Local Government Affairs, West	Bristol Myers Squibb
Monica Devincenzi	Municipal Manager, Sales	Republic Services
Lisa Diaz Nash	Mayor	City of San Mateo
Pamela DiGiovanni	Councilmember	City of Daly City
Emily Douglas	Regional Director	Engie
Roderick Daus-Magbual	Vice Mayor	City of Daly City
Marci Dragun	Chief of Staff	Office of Supervisor Warren Slocum
<b>Michelle Droz</b>	<b>Executive Director</b>	<b>San Mateo County API Caucus</b>
<b>John Dugan</b>	<b>Mayor</b>	<b>City of San Carlos</b>
<b>Kathy Duong</b>	<b>Public Policy Manager</b>	<b>Amazon</b>
Kaia Eakin	Councilmember	City of Redwood City
<b>Brad Ehikian</b>	<b>Partner</b>	<b>Premier Properties</b>
Jessica Epstein	Director, Government and Community Affairs	San Mateo County Transit District
Marisol Escalera	Policy Director	Office of Supervisor Ray Mueller
<b>Theresa Faapuaa</b>	<b>Board of Directors</b>	<b>San Mateo County Event Center</b>
Christina Falla	Legislative Aide	Office of Supervisor Noelia Corzo
Georgia Farooq	Executive Director	Thrive Alliance
Nicole Fernandez	District Director	Office of State Sen. Josh Becker
Sarah Fields	Director of Community Engagement and Public Affairs	LifeMoves
<b>Sarah Fishleder</b>	<b>Director of Real Estate Development, NorCal</b>	<b>Clear Channel Outdoor</b>
Michelle Flaherty	Assistant City Manager	City of Redwood City
Eddie Flores	Vice Mayor	City of South San Francisco
<b>John Fong</b>	<b>Partner</b>	<b>Kenson Ventures</b>
<b>Rosanne Foust</b>	<b>President &amp; Chief Executive Officer</b>	<b>SAMCEDA</b>
Marina Fraser	Chair	Samtrans Board of Directors
<b>Casey Fromson</b>	<b>Chief of Staff</b>	<b>Caltrain</b>
Anders Fung	Mayor	City of Millbrae



# Progress Seminar Attendees

Name	Title	Representing
Jason Galisatus	Account Director	Singer Associates, Inc.
<b>Jerome Gallegos</b>	<b>Trustee</b>	<b>Jefferson Union High School District</b>
Nicole Gallosa	Operations and Programs Coordinator	Chamber San Mateo County
Papia Gambelin	Managing Director – State & Local Government Affairs – Western Region	United Airlines
<b>Kevin Gardiner</b>	<b>Community Development Director</b>	<b>City of Burlingame</b>
<b>Dani Gasparini</b>	<b>Owner</b>	<b>GB Consulting</b>
Lisa Gauthier	Councilmember, City of East Palo Alto	Candidate for San Mateo County Board of Supervisors Race District 4
<b>Jeff Gee</b>	<b>Division Manager</b>	<b>Swinerton Management &amp; Consulting</b>
Alane Gilbrech	Executive Officer / Office Manager	San Mateo County Association of Realtors
Jon Goldman	President	Premier Properties
Maurice Goodman	Vice Mayor	City of Millbrae
<b>Bill Graham</b>	<b>President</b>	<b>Dignity Health Sequoia Hospital</b>
<b>Desiree Green</b>	<b>Administrative Assistant</b>	<b>San Mateo County Building &amp; Construction Trades Unions</b>
<b>Greg Greenway</b>	<b>Executive Director</b>	<b>Seaport Industrial Association</b>
<b>Lennies Gutierrez</b>	<b>2024 Chair of the Board Chamber San Mateo County/Director of Government Affairs</b>	<b>Comcast</b>
Tom Hamilton	Councilmember	City of San Bruno
<b>Charles Hansen</b>	<b>Chief Program Officer</b>	<b>Peninsula Family Service</b>
Kaarin Hardy	Co-President	Leadership Council San Mateo County
<b>Darian Harris</b>	<b>Chief Executive Officer, Mills Peninsula Medical Center</b>	<b>Sutter Health</b>
<b>Jim Hartnett</b>	<b>Chief Executive Officer</b>	<b>HJSR Solution LLC</b>
Jeannette Haskell	Business Analyst	Recology South Region
<b>Patricia Hatcher</b>	<b>Area Operations, Director</b>	<b>Palo Alto Medical Foundation, Sutter Health</b>
<b>Barrie Hathaway</b>	<b>Chief Executive Officer</b>	<b>JobTrain</b>
<b>Stacey Hawver</b>	<b>Executive Director</b>	<b>Legal Aid Society of San Mateo County</b>
Rich Hedges	Councilmember	City of San Mateo
<b>Patrick Heisinger</b>	<b>Assistant City Manager</b>	<b>City of Redwood City</b>
Sandy Herrera	Customer Service Manager	Recology San Mateo County
Marc Hershman	Director of Government Affairs	Peninsula Clean Energy
Sam Hindi	Councilmember	City of Foster City
<b>Sarah Hubbard</b>	<b>Executive Director</b>	<b>Sustainable San Mateo County</b>
Davina Hurt	Councilmember	City of Belmont
John Hutar	President and Chief Executive Officer	The San Francisco Peninsula
Anne Im	Senior Director, Community Partnerships	Silicon Valley Community Foundation
Leonard Iniguez	Board of Directors	San Mateo County Event Center
Nori Jabba	Housing Coordinator	City of Foster City
<b>Dawn Jedkins</b>	<b>Associate Principal</b>	<b>DES</b>
<b>Stacy Jimenez</b>	<b>Vice Mayor</b>	<b>City of Foster City</b>
<b>Carol Johnson</b>	<b>Planning Director</b>	<b>Good City Company</b>
<b>Dana Johnson (They/them/he)</b>	<b>LGBTQIA+ Commissioner/Board Member</b>	<b>County of San Mateo/CoastPride</b>
<b>Cathy Jordan</b>	<b>Vice President</b>	<b>Mid-Peninsula Water District</b>
Connie Juarez-Diroll	Chief Legislative Officer	County of San Mateo
Sean Kali-rai	Managing Partner	Unite Strategies

# Progress Seminar Attendees

Name	Title	Representing
<b>Dr. Edward Kao</b>	<b>Physician-in-Chief</b>	<b>Kaiser Permanente</b>
Lorianna Kastrop	Chairperson, Port Commission	Port of Redwood City
Mike Kastrop	Principal Architect	The Kastrop Group Architects
Kathleen Kavanaugh	Director, Real Estate Development	Stanford University
Rabiah Khalid	Manager of Community Investment	Comcast
Alex Khojikian	City Manager	City of San Mateo
Art Kiesel	Councilmember	City of Foster City
<b>Veronica Klein</b>	<b>Director</b>	<b>Tishman Speyer</b>
Suzanne Knowlton	Vice President, Marketing & Community Relations	Monterra Credit Union
<b>Amy Koo</b>	<b>Trustee</b>	<b>Sequoia Union High School District</b>
<b>Tara Korlipara</b>	<b>Director of Development and Market Lead</b>	<b>Longfellow Real Estate Partners</b>
Joe La Mariana	Executive Director	RethinkWaste
Matt Larson	Principal	M Larson Consulting
Gina Latimerlo	Councilmember	City of Belmont
Charles Lavery	District Representative	Operating Engineers Local Union No.3
Wayne Lee	Trustee	San Mateo County Community College District
Jeremy Levine	Policy Manager	Housing Leadership Council of San Mateo County
<b>Catherine Lew</b>	<b>Principal</b>	<b>The Lew Edwards Group, Political Consulting Firm</b>
<b>Sam Liccardo</b>	<b>Former Mayor, City of San Jose</b>	<b>Candidate for United States Congressional Race 16th District</b>
Andrew Lie	Trustee	Jefferson Union High School District
Yayu Lin	President, Commercial Development + Advisory	Sares Regis
<b>Julie Lind</b>	<b>Executive Officer/Executive Secretary Treasurer</b>	<b>San Mateo County Central Labor Council</b>
<b>Sarah Lind</b>	<b>Deputy Court Executive Officer</b>	<b>San Mateo County Superior Court</b>
<b>Kim Lopez</b>	<b>President</b>	<b>Cañada College</b>
Kitty Lopez	Executive Director	First Five San Mateo County
Antonio Lopez	Mayor, City of East Palo Alto	Candidate for San Mateo County Board of Supervisors Race District 4
Adam Loraine	Councilmember	City of San Mateo
<b>Pilar Lorenzana</b>	<b>Vice President, Community Action, Initiatives &amp; Policy</b>	<b>Silicon Valley Community Foundation</b>
<b>Evan Low</b>	<b>Assemblymember, California State Assembly, District 24</b>	<b>Candidate for United States Congressional Race 16th District</b>
<b>Chris Lunny</b>	<b>Director of North America Facilities</b>	<b>Meta</b>
Avery Lyford	City of Belmont Parks & Recreation Commssioner	CEO, Silicon Valley Exchange
<b>Stephen Maduli-Williams</b>	<b>Economic Development Senior Manager</b>	<b>Amazon</b>
<b>Yasmeen Magaña</b>	<b>Community Outreach Cordinator</b>	<b>Meta</b>
Nancy Magee	Superintendent of Schools	San Mateo County Office of Education
Juslyn Manalo	Mayor	City of Daly City
<b>Shawn Marshall</b>	<b>Chief Executive Officer</b>	<b>Peninsula Clean Energy</b>
<b>Ivan Martinez</b>	<b>Executive Director</b>	<b>Pal Center</b>
Julia Mates	Mayor	City of Belmont
Cassandra Matter	Communications Director	Office of Supervisor Ray Mueller
Tom Mattusch	Commissioner	San Mateo County Harbor District
Stan Maupin	Vice Chair, Port Commission	Port of Redwood City

# Progress Seminar Attendees

Name	Title	Representing
David Mauro	Business Representative	IBEW 617
Jim McGowan	Vice President of Government Relations	YMCA of Silicon Valley
Alex McIntyre	City Manager	City of San Bruno
Camryn McNab	Senior Associate	BMW Campaigns
Rowena Meafua	Board Member	San Mateo County Event Center
Marty Medina	Councilmember	City of San Bruno
Rico Medina	Mayor	City of San Bruno
Sailesh Mehra	Chief Executive Officer	SK8 - Land Use   Entitlements   Development
Aubrey Merriman	Chief Executive Officer	LifeMoves
Nevada Merriman	Director of Policy	MidPen Housing
Deborah Miller	Chief Advancement Officer	Peninsula Family Service
Ana Miscolta	Director of Community Resilience	Thrive Alliance
Teresa Montgomery	Sustainability Manager	South San Francisco Scavenger Company
Jamillah Moore	Vice President of Student Affairs & Enrollment Management	San Francisco State University
Melissa Moreno	Interim Chancellor	San Mateo County Community College District
Kate Mosley	Owner	Orangetheory Fitness
Ray Mueller	Supervisor, District 3	County of San Mateo
Seamus Murphy	Executive Director	WETA
Mark Murray	Principal	Lane Partners
Mark Nagales	Councilmember	City of South San Francisco
Rob Newsom	Deputy Mayor	City of San Mateo
Hung Nguyen	Business Development	Comcast
Flor Nicolas	Councilmember	City of South San Francisco
Sathvik Nori	Trustee	Sequoia Union High School District
Diana O'Dell	Director, Land Use Planning	Stanford University
Mike O'Neill	Legislative Aide	Office of Supervisor Ray Mueller
Erin O'Toole	Vice President of Financial Development	YMCA of Silicon Valley
Larisa Ocaña	Marketing, Communications and Operations Manager	SAMCEDA
Afshin Oskoui	City Manager	City of Belmont
Christine Padilla	Director	Build Up San Mateo County
Wade Painter	President & Chief Executive Officer	Monterra Credit Union
Robin Pang-Maganaris	Councilmember	City of Belmont
Bart Pantoja	Financial Secretary-Treasurer	San Mateo County Building and Construction Trades Council
Diane Papan	Assemblymember, District 21	California State Assembly
Gina Papan	Councilmember	City of Millbrae
Kathy Parmer-Lohan	Executive Director	San Carlos Education Foundation
Moises Pelayo	President	San Mateo County Association of Realtors
Fernando Peña	Government Affairs Director	San Mateo County Association of Realtors
Kevin Perkey	Senior Manager	NOVAworks
Michaela Petrik	Government & Community Affairs Officer	SamTrans
Dave Pine	Supervisor	County of San Mateo
Kirsten Pinochi	General Manager	Recology San Bruno
Mary Prem	Chief Executive Officer	South San Francisco Chamber of Commerce
Toni Presta	Superintendent	Jefferson Union High School District



# Progress Seminar Attendees

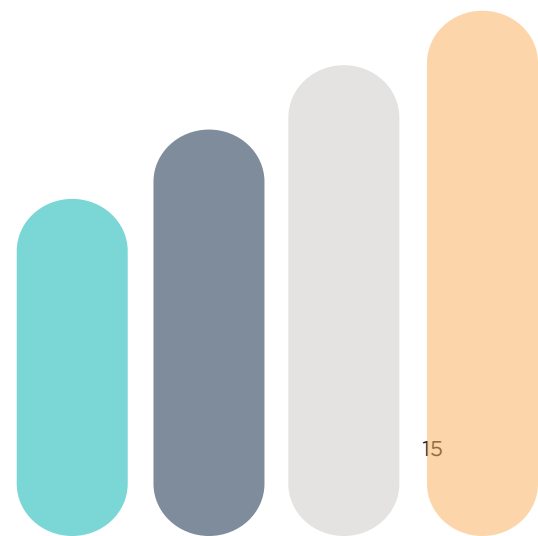
Name	Title	Representing
Rebecca Prozan	Director, Government Affairs + Public Policy, West Region	Google
Jim Pruett	General Manager	San Mateo County Harbor District
Gina Quiney	Chief of Staff	Office of Supervisor Ray Mueller
Ashley Quintana	Public Policy Manager, U.S. Policy	Meta
<b>Patty Rally</b>	<b>Chief Development Officer</b>	<b>YMCA of Silicon Valley</b>
<b>Victoria Ramirez</b>	<b>Director of State and Local Government Affairs</b>	<b>Stanford Health Care</b>
Sharon Ranals	City Manager	City of South San Francisco
Mario Rendon	District Director	Office of Congressman Kevin Mullin
Jacki Rigoni	Senior Legislative Aide	Office of Supervisor Noelia Corzo
Alexandra Rinear	Waste Zero Manager	Recology San Mateo County
Jill Rodby	Public Affairs & Gov't Relations Manager	Sims Metal
Mia Rossi	Community Outreach Manager	Recology San Mateo County
Corey Rostad	Real Estate	Kenson Ventures
Elmer Martinez Saballos	Councilmember	City of Redwood City
Kalimah Salahuddin	Board President	Jefferson Union High School District
Juan Salazar	Director, Public Policy	Meta
<b>Emily Salgado</b>	<b>Senior District Representative</b>	<b>Office of Assemblymember Diane Papan</b>
Armando Sanchez	Executive Director	HEART of San Mateo County
Nicole Sandkulla	Chief Executive Officer	Bay Area Water Supply and Conservation Agency
<b>Mary Esther Schnaubel</b>	<b>Assistant Director for Residential Experience</b>	<b>Stanford University</b>
<b>Thomas J. Schnaubelt</b>	<b>Assistant Director</b>	<b>Hoover Institution Center for Revitalizing American Institutions, Stanford University</b>
Marlena Sessions	Executive Director	NOVAworks
Gina Simi	Public Policy and Regulatory Affairs	Zoox
Joe Simitian	Supervisor, County of Santa Clara	Candidate for United States Congressional Race 16th District
Mark Simon	Columnist	San Mateo Daily Journal
Kathryn Slater-Carter	Commissioner	San Mateo County Harbor District
Jeff Smith	Director Development	Sares Regis Group
<b>Suzanne St. John-Crane</b>	<b>Chief Executive Officer</b>	<b>American Leadership Forum Silicon Valley</b>
<b>Jenny Stahler</b>	<b>Business Manager</b>	<b>Redwood City Police Department</b>
Catherine Stefani	Supervisor	County of San Francisco
Dana Stoehr	Chief Executive Officer	San Mateo County Event Center
<b>Charles Stone</b>	<b>Partner</b>	<b>Goethals Legal, Pc</b>
Chris Sturken	Council Member	City of Redwood City
Patrick Sullivan	Mayor	City of Foster City
Glenn Sylvester	Councilmember	City of Daly City
<b>Nicole Taylor</b>	<b>President &amp; Chief Executive Officer</b>	<b>Silicon Valley Community Foundation</b>
Cecilia Taylor	Mayor	City of Menlo Park
<b>Kathryn Tekulve</b>	<b>General Manager</b>	<b>Republic Services</b>
<b>Amar Tiwari</b>	<b>Clean Energy Development Manager</b>	<b>ENGIE</b>
Van Ton-Quinlivan	Chief Executive Officer	Futuro Health
Jennifer Torai	Director of Local Government Affairs	Stanford Health Care
Auggie Torres	Director, Local Government Affairs	Stanford University
<b>Hugo Torres</b>	<b>Vice President</b>	<b>San Mateo County Office of Education</b>

# Progress Seminar Attendees

Name	Title	Representing
Randy Torrijos	Legislative Aid	Office of Supervisor Dave Pine
<b>Rob Trujillo</b>	<b>Vice President</b>	<b>Dirtmarket</b>
<b>Eddie Truong</b>	<b>Partner</b>	<b>Unite Strategies</b>
<b>Annie Tsai</b>	<b>Chief Operating Officer</b>	<b>Interact</b>
Peter Tsai	Senior Vice President, Real Estate Development	The Sobrato Organization
<b>Adam Van de Water</b>	<b>Executive Director</b>	<b>Transbay Joint Powers Authority</b>
Sue Vaterlaus	Mayor	City of Pacifica
Joey Vaughan	Senior Manager of Community Partnerships	Lucile Packard Children's Hospital
Michael Verdone	Director	San Mateo County Association of Realtors
Vishal Verma	General Partner	Edgewood Ventures LLC
<b>Stacey Wagner</b>	<b>Director - Public Affairs</b>	<b>Kaiser Permanente</b>
Devon Wardlow	Vice President of Public Affairs	Embarc
<b>Leila Watkins</b>	<b>Director of Development</b>	<b>CASA of San Mateo County</b>
<b>Charlie Weidanz</b>	<b>President &amp; Chief Executive Officer</b>	<b>Palo Alto Chamber of Commerce</b>
Lucy Wicks	Assistant Vice President, Office of Government Affairs	Stanford University
Linda Wolin	Chief of Staff	Office of Supervisor Dave Pine
<b>Erica Wood</b>	<b>President &amp; Chief Executive Officer</b>	<b>San Mateo Area Chamber of Commerce</b>
<b>Kat Wuelfing</b>	<b>General Manager</b>	<b>Mid-Peninsula Water District</b>
<b>Alex Youn</b>	<b>Director of Government Affairs, Northern Peninsula and SF</b>	<b>Comcast</b>
<b>Richard Young</b>	<b>Director of Outreach</b>	<b>Frontier Energy</b>
Renee Zimmerman	Senior Executive Director	YMCA of Silicon Valley
John Zirelli	General Manager	Recology San Mateo County
Kristine Zortman	Executive Director	Port of Redwood City

## 2023 Annual Report

Scan the QR code to Read Chamber San Mateo County's 2023 Annual Report.



# Progress Seminar Presenters



## Rafael Avenado

### Executive Director, Redwood City Together

Rafael Avenado was raised in South San Francisco and recently celebrated 20 years of being in public service here in the Bay Area. Rafael currently lives and works in Redwood City and is currently the Executive Director of Redwood City Together, a collective impact organization that advances the success of youth and families in Redwood City and North Fair Oaks through community collaboration.

Rafael's drive, unique teaching ability, and belief in the power of mentorship have been instrumental to his journey. He holds a bachelor of science degree in Public Management with a specialization in Human Resources from Colorado State University and has earned his master's degree in Organization and Leadership from the University of San Francisco. In his free time, Rafael loves spending time with family, attending church, playing sports, practicing martial arts and volunteering in the Redwood City and North Fair Oaks communities as a board member of the St. Francis Center and Redwood City Child Development Program.



## Mitchell Bailey

### Owner & Principal Consultant, MBailey Advisors, LLC

Mitchell Bailey is owner and principal consultant of MBailey Advisors, LLC, a consulting practice that supports non-profit, higher education and public organizations. He previously served as Vice Chancellor and Chief of at the San Mateo County Community College District, where he oversaw the development of additional workforce housing and the passage of SB893, which made community college free for residents in San Mateo County. Previously, Mitch served as Chief of Staff at Sinclair Community College in Dayton, Ohio, and four years in government operations at the Ohio Department of Administrative serving in a number of policy and management positions, along with leading several government-wide initiatives for the Ohio Governor's Office. From 2000 - 2006, Mitch was a local, state and national executive for a non-profit, civics and voter education program in Ohio, Kentucky and Arizona.

Mitch is involved in various community and professional activities, including serving on the boards of Chamber San Mateo County and Ombudsman Services of San Mateo County. Mitch was named as one of the "Forty Under 40" business and community leaders by the Dayton Business Journal in 2015 and has a commission in the Honorable Order of Kentucky Colonels. He earned an associate degree in communication from Sinclair Community College, a bachelor's degree in public administration from Capital University and a master's degree in public administration (MPA) from Wright State University.



## Dr. Kismet Baldwin-Santana

### Health Officer, County of San Mateo

Dr. Kismet Baldwin-Santana joined San Mateo County as health officer in 2023. Most recently the interim health officer in Sonoma County, Dr. Baldwin-Santana has been a deputy health officer in Sonoma County, a health officer in San Joaquin County, and a quarantine medical officer for the Centers for Disease Control and Prevention.

Dr. Baldwin-Santana has been deeply involved in public health work since earning her bachelor's degree in microbiology and a Doctor of Medicine degree at the Ohio State University. She completed her pediatric residency at Sinai Hospital and her neonatology fellowship at UCLA. She did post-doctoral work at UCLA where she studied ways to reduce the incidence of sickle cell disease through gene therapy. During the pandemic, she also completed a master's degree in public health at the University of California, Berkeley.

Dr. Baldwin-Santana is dedicated to addressing social determinants of health that affect the health and well-being of those who live and work in the county. She is interested in finding creative ways to collaborate with county stakeholders to address issues such as the opioid epidemic, specifically better coordination of medication assisted treatment across patient encounters and increasing access to MAT, homelessness and housing instability, adverse childhood experiences, preparedness, climate change, the built environment and increasing sexually transmitted infections all while using a health equity lens.



## Mike Callagy

### County Executive Officer, County of San Mateo

As County Executive Officer, Mike Callagy oversees the efficient running of daily County operations and carries out policies established by the Board of Supervisors. Mike joined the County in 2013 as a Deputy County Manager and was named Assistant County Manager in April 2016. In November 2018, he assumed the role of County Manager after being appointed by the Board of Supervisors. In this role, Mike has made ending homelessness a key priority and has deemed 2022 "The Year of Working Together to End Homelessness."

Mike has more than 37 years of public sector service experience. Before joining the County, Mike spent 29 years with the San Mateo Police Department where he ran day-to-day operations as the deputy police chief until his retirement. He is a licensed attorney in the state of California and in addition to his law degree from Santa Clara University, holds a bachelor of arts and master's degrees in public administration from the College of Notre Dame and a master's degree in homeland defense and security from the Naval Postgraduate School. A San Mateo County native, he lives in Foster City with his family.



# Progress Seminar Presenters



## Dr. Lisa Chamberlain

**Professor of Pediatrics, Stanford University**

Lisa Chamberlain, MD, MPH is Professor of Pediatrics, Associate Chair of Policy and Community, director of the Office for Child Health Equity in Stanford's Department of Pediatrics and Associate Director of the Stanford Center for Early Childhood. Her academic focus is on reducing pediatric disparities. As Stanford's Harman Faculty Scholar she studies the evidence base for "Kinder Ready Clinics", bridging the early childhood education and pediatric sectors to reduce educational inequity. Her health services research examines children with medical complexity, which led her to work Sacramento around Title V reform, increasing access to care in California. Nationally, she serves on the American Academy of Pediatrics' Child Health Financing committee which crafts official recommendations to federal Medicaid/CHIP policy.

Dr. Chamberlain is founder of the Stanford Pediatric Advocacy Track, a nationally replicated program training pediatricians to address child poverty through community and policy engagement, now a national requirement. She co-founded the California Collaborative which trains over 800 pediatricians a year, now modeled in 8 other states. She was selected for membership into the American Pediatric Society and was then elected to the executive board. Dr. Chamberlain is the recipient of many national and local awards for her work, including the inaugural Child Advocacy Award at Stanford's Department of Pediatrics. A frequent Stanford lecturer, she has been awarded two of its highest teaching awards.



## Don Cecil

**Principal, MC<sup>2</sup> Bay Area Public Affairs Consulting**

Don Cecil has been providing public and government affairs consulting to corporations, public agencies, trade associations and nonprofits in the Bay Area for the past 15 years. In his consulting practice, MC<sup>2</sup> Public Affairs, Don brings innovative and strategic thinking, as well as meticulous attention to detail, to clients including Comcast, Dignity Health, Castilleja School, Chevron, PG&E and the Palo Alto Housing Corporation. The projects and initiatives advanced by Don's work have helped to improve local government, build strong communities and foster a commonsense balance between a strong local economy, smart development and quality of life.

Prior to starting his own firm, Don managed more than 30 successful campaigns for city council, the board of supervisors and state assembly; as well as ballot measures that have secured more than \$1 billion in funds for local school facilities, the new Valley Medical Center Hospital, and transportation improvements. Don works successfully on behalf of clients and issues by maintaining positive relationships - even among people who may not see eye-to-eye - and always being honest and above-board with all parties.



## Emily Douglas

**Regional Director, ENGIE**

Emily Douglas is a regional director for distributed energy solutions at ENGIE. Emily has a proven track record of developing and implementing clean energy programs for public agencies, and leads a diverse team developing local energy projects in California. ENGIE's purpose is to accelerate the energy transition, from grid-scale renewables to local energy solutions, from renewable gasses to energy management and flexible grid services. With a deep understanding of markets for energy and environmental technology, Emily is dedicated to building a profitable and sustainable future for clean energy.



# Progress Seminar Presenters



## Jessica Epstein

### Director of Government and Community Affairs, San Mateo County Transit District

Jessica Epstein is the Director of Government and Community Affairs for the San Mateo County Transit District, focusing on SamTrans bus and paratransit service and San Mateo County Transportation Authority (TA) projects. She leads the State and Federal Legislative Program, city and regional engagement, and communications efforts for planning and construction projects.

In her time at the District, she worked on multiple San Mateo county-wide engagement efforts such as Get Us Moving SMC, which led to the successful Measure W sales tax, the TA Strategic Plan 2020-2024, which defined how tax dollars would be spent, and Reimagine SamTrans a project to redesign the entire SamTrans bus network. Jessica works with technical staff, stakeholders, community-based organizations, and the community at large to ensure agency projects reflect community input and have broad-based multilingual outreach.

Prior to joining the Transit District Jessica worked in Government Affairs, on multiple political campaigns, and as a trial attorney.



## Rosanne Foust

### President & CEO, San Mateo County Economic Development Association (SAMCEDA)

As President and CEO of SAMCEDA, Rosanne Foust directs conversations important to maintaining a strong local and regional economy, attracting and retaining major employers and good jobs, and creating partnerships between business and government to address the critical issues of affordable housing, mobility improvements and maintaining a good quality of life.

Previously, Rosanne had a twenty-year career with Alsace Development International USA, Inc. in multiple positions including Regional Manager, Director U.S. Operations, Executive Vice President North America & Treasurer of the Corporation. She directed and managed U.S. offices in Boston, Los Angeles and Redwood City and an international office in Sydney, Australia for the economic development authorities of Alsace, France.

Committed to public and community service, Rosanne served for twelve years on the City Council in Redwood City, including as Mayor and Vice Mayor. She has also served on and led numerous boards and commissions, including First Five Commission San Mateo County, San Mateo County Community College District Bond Oversight Committee, Measure W Citizens' Oversight Committee, Chamber San Mateo County, Supervisory Committee of Provident Credit Union, NOVAworks, San Mateo County Event Center, Notre Dame de Namur University, and the Redwood City Improvement Association.

Rosanne holds a master's degree in public administration, bachelor of arts degree in International Studies and Economics. The San Francisco Business Times has honored Ms. Foust as one of the "Most Influential Women in Business in the Bay Area" (from 2009 until the present), "Businesswoman and Person of the Year" by Chamber San Mateo County, Notre Dame de Namur University's first "Alumna of Distinction," named "Woman of the Year" by then Assembly Speaker Pro Tempore Kevin Mullin, and was inducted to the San Mateo County Women's Hall of Fame in 2024.



## Casey Fromson

### Chief of Staff, Caltrain

Casey Fromson serves as Chief of Staff for Caltrain and oversees the external affairs for the agency in addition to supporting the Executive Director in implementing the goals and vision for the agency.

Over the last decade, Casey has held many different roles at the San Mateo County Transit District and has played instrumental roles in securing federal and state funding to electrify Caltrain, passage of local sales tax Measures W and RR, regional support for the Caltrain Business Plan and countywide engagement on SamTrans' new bus network called "Reimagine SamTrans." In 2019, Mass Transit magazine listed her as one of its "40 Under 40" for her demonstrated leadership qualities and commitment to making an impact in transit.

Before moving to California and joining the District in 2013, Casey worked for seven years in Washington, D.C., for U.S. Senator Patty Murray (WA) as a Legislative Aide and U.S. Rep. Anna Eshoo (CA-18) as Chief of Staff and Legislative Director.

Casey lives in Pacifica and loves going on outdoor adventures with her husband and two children (6 and 3 years old).

# Progress Seminar Presenters



**Lisa Gauthier**  
Councilmember, City of East Palo Alto

Lisa Gauthier was elected to the East Palo Alto City Council in 2012, and previously held the positions of Vice Mayor in 2014, 2018 and 2022 and Mayor in 2015, 2019 and 2023. Lisa is the Senior Vice President of Inclusion & Belonging for the Silicon Valley Leadership Group, where she leads the Workforce/Education, Racial Justice & Equity, and Healthcare policy areas.

Lisa is an active board member with The Health Trust, Live in Peace, CCAG, San Mateo County Office of Emergency Services, Stanford Medicine Community Council, San Mateo County's One Shoreline Agency, and the San Francisco JPA. She is a graduate of Emerge, a leadership program for democratic women, and a Regional Area Director for BWOPA (Black Women Organized for Political Action). She was awarded the Athena Award from the Mountain View Chamber of Commerce in 2018. She was chosen as one of Silicon Valley's 100 Women of Influence in 2020 by Silicon Valley Business Journal and received the Women of the Year Award from Assemblymember Marc Berman in 2022.

In 2019, she earned her bachelor's degree in business administration with a focus on general management from Thomas Edison University in New Jersey. She is the proud mother of three young adults, a longtime resident of East Palo Alto, and an active community volunteer.



**Lennies Gutiérrez**  
Director of Government Affairs for South Bay and Southern Peninsula, Comcast

Lennies is the Director of Government Affairs for Comcast for the South Bay and Southern Peninsula areas since February 2010 and previously at the California State Capitol. She is currently Chair of the Board of Chamber San Mateo County and on the San Jose Chamber Board, the Bay Area Women's Sports Initiative and the Latino Leadership Alliance. She also serves as an advisory board member of the Chicano Latino Youth Leadership Project and the Latina Coalition of Silicon Valley. Lennies has participated in several leadership programs and is currently part of the American Leadership Forum of Silicon Valley Class of XXXVI - Urban Innovation Network. She is a graduate of UC Davis and the Lorenzo Patino Law School of Sacramento. Lennies enjoys watching and playing sports, running, going salsa dancing, and spending time with her husband and son.



**Jim Hartnett**  
CEO, HJSR Solutions, LLC

Jim Hartnett is an attorney and the CEO of HJSR Solutions LLC, which provides consulting on crisis communications, strategy and organizational issues. He is the former Chief Executive Officer, General Manager and Executive Director of the San Mateo County Transit District, San Mateo County Transportation Authority, and Caltrain Joint Powers Agency (March 2015-April 2021). He is also a former member and vice-Chair of the California High Speed Rail Authority Board. Jim worked as an attorney for 35 years in Silicon Valley and has served as a Mayor and Councilmember for the City of Redwood City.

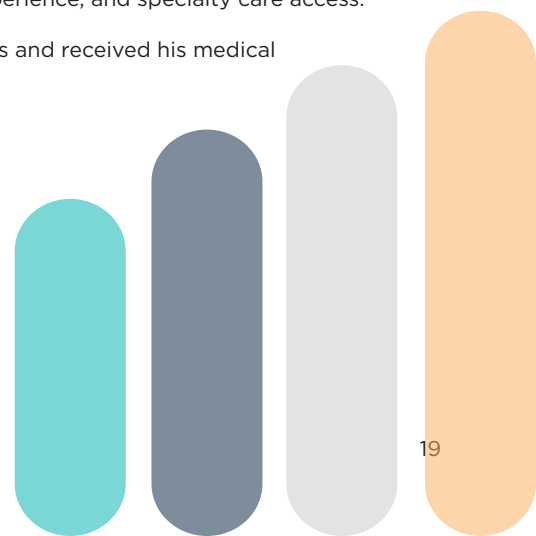


**Edward Kao, MD**  
Physician-in-Chief, Kaiser Permanente South San Francisco Medical Center

Edward Kao, MD, serves as Physician-in-Chief at the Kaiser Permanente South San Francisco Medical Center, where he leads and oversees the physicians and clinical care delivery operations that serve patients and members in South San Francisco.

Dr. Kao, a Radiologist, joined Kaiser Permanente South San Francisco in 2009. He became the Chief of Radiology in 2011, where he helped to increase access to high-quality care for members and patients. In 2017, Dr. Kao was promoted to Assistant Physician-in-Chief overseeing performance improvement, care experience, and specialty care access.

Dr. Kao graduated from Stanford University with a degree in biological sciences and received his medical degree from the University of California, Davis.



# Progress Seminar Presenters



## Catherine Lew

### Co-Founder & Principal Consultant, The Lew Edwards Group

With over three decades of experience in community organizing and politics, Catherine Lew is known as one of California's toughest and most successful communications and campaign consultants. In 2018, she was named by the Sacramento Bee as a California Influencer, joining selected statewide leaders in politics, policy, and government shaping election dialogue through the Bee/McClatchy news mediums.

A veteran of over 800 political campaigns and ballot measures, Catherine and her firm, The Lew Edwards Group (LEG) has worked extensively throughout California with a significant footprint in San Mateo County. Formerly the California Deputy Political Director of the Clinton-Gore campaign, Catherine and Team LEG has represented the California Democratic Party, California Labor Federation, California Nurses and California Teachers associations, along with Assembly and city council candidates and agencies throughout San Mateo County.

As a small business owner, Catherine is particular proud of her firm's work to assist clients with building broad based coalitions that transcend party affiliation and ideology, often embracing and engaging Labor, Business, BIPOC and youth constituencies as well as the public at large, to find common ground in maintaining healthy local economies and quality of life.

A graduate of the University of California, Berkeley and the University of San Francisco School of Law, Catherine Lew is also a member of the California State Bar.



## Sam Liccardo

### Former Mayor, City of San Jose

Sam Liccardo is running for Congress to focus Washington on the big issues like homelessness, crime, and the punishing cost of living. As Mayor of San José, Liccardo's innovative efforts to confront homelessness include pioneering the conversion of motels to housing. He piloted the development of quick-build prefabricated housing communities that were constructed at a fraction of the time and cost of traditional apartments. Liccardo also launched a successful program that employs unhoused residents cleaning the city in exchange for housing and pay.

In his two terms, San José enjoyed the greatest expansion of tech growth in its history, with new or expanded campuses of leading employers such as Google, Adobe, Amazon, Apple, Microsoft, and Zoom. He pushed for solutions to reduce barriers to job growth and transit-oriented housing development. Liccardo led the California Big City Mayors coalition for two years, spearheading efforts by cities to secure unprecedented statewide funding for more rapid homelessness and pandemic response.

Prior to his service in elected office, Liccardo prosecuted felony crimes of sexual assault and child exploitation in the Santa Clara County District Attorney's Office, and served as a federal prosecutor in the Southern District of California. He is a graduate of Harvard Law School, Harvard's John F. Kennedy School of Government, and Georgetown University. He and his wife, Jessica García-Kohl, live in San José.



## Julie Lind

### Executive Secretary-Treasurer, San Mateo County Central Labor Council

Julie Lind is a fourth-generation union member and is proudly in her fourteenth year with the San Mateo Labor Council. Julie began her career over 20 years ago working as a legislative staffer, first with Congresswoman Zoe Lofgren, then Assemblywoman Rebecca Cohn and finally with Senator Ellen Corbett. Julie came to the San Mateo Labor Council in 2010 as the Political Director and took over as the head of the organization in the Fall of 2016. The San Mateo Labor Council represents 99 affiliate unions and nearly 85,000 members and their families countywide.

Julie currently serves as a member of the State Federation/Central Labor Council Advisory Committee to the AFL-CIO, Chair of the Board of the San Mateo County Union Community Alliance, is a Vice President of the California Labor Federation, a member of the UC Berkeley Labor Center Advisory Board, the UC Berkeley Labor Occupational Health Project Advisory Board, the Trades Introduction Program Advisory Committee and was part of the San Mateo County Charter Review Commission in 2018. Julie has a bachelor's degree in English and a master's degree in public administration from San Jose State University, is a 2008 graduate of Emerge California, a 2020 Graduate of Chamber SMC's Leadership Program, serves on the NOVAworks Board and the Board of Chamber SMC, is Vice Chair of the County's Measure W Citizens Oversight Committee and has proudly served as a Co-Chair of the San Mateo County Progress Seminar since 2021. Julie was named as the 2023 Woman of the Year by Chamber San Mateo County.

A Bay Area native, she currently resides in Castro Valley with her husband and 6-year-old daughter.

# Progress Seminar Presenters



**Antonio López**  
Mayor, City of East Palo Alto

Antonio López is first generation American and the proud son of Mexican immigrants. He earned his Bachelors at Duke University, a masters from Rutgers-Newark and another from the University of Oxford as a Marshall Scholar. He is currently finishing his PhD at Stanford University.

In 2020, in the height of the COVID-19 pandemic, Antonio returned to hometown to give back. Seeing the enormous needs that remain in East Palo Alto, he successfully ran for office, winning his election by just 69 votes, and thereby becoming the youngest councilmember to currently serve on the city council. From 2021-2023, he also served as district representative for CA State Senator Josh Becker (D-13), working specifically on creating greater inroads for veterans, the Latinx community, as well as the local Muslim community here in the San Francisco Peninsula.

Since 2020, Antonio has served on the board of directors for several organizations: El Concilio Latino de San Mateo, Reaching and Inspiring Success Through Education (RISE), the Bay Area Water Supply & Conservation Agency (BAWSCA), and Mannakin Dance Theater. Having experienced firsthand the transformative power of education, Antonio has also supported and campaigned on behalf of bond measures in support of our local school districts, including Measure I, which will provide \$161M in infrastructure improvements for the Ravenswood City School District, and Measure W, which in turn will bring \$591M to the Sequoia Union High School District.



**Evan Low**  
Assemblymember, California State Assembly

Evan Low represents District 26 in the California State Assembly after first being elected in 2014. At the time, Assemblymember Low was the youngest Asian American legislator ever elected to the Assembly. District 26 includes the cities of Cupertino, San José, Santa Clara, and Sunnyvale, and the unincorporated Santa Clara County districts of Burbank and Fruitvale.

Assemblymember Low was born and raised in Silicon Valley, and these roots inspired him to pursue a career in service. His work in the community and deep understanding of issues concerning residents led him to run for a seat on the Campbell City Council in 2006. His election victory made him the first Asian American to serve on the City Council.

In 2010, Assemblymember Low made history once again as the youngest openly LGBTQ+ mayor in the country at age 26. He has also served as a community college instructor at De Anza Community College, where he taught American Government and Political Science.

Assemblymember Low attended local public schools and earned degrees from De Anza and San José State University. He went on to graduate from Harvard University's Senior Executives in State and Local Government Program.



**Shawn Marshall**  
Chief Executive Officer, Peninsula Clean Energy

As Chief Executive Officer of Peninsula Clean Energy (PCE), Shawn Marshall leads a team of 50 mission-driven professionals providing affordable, clean electricity to over 310,000 customers in San Mateo County and the City of Los Banos, CA. She also leads the agency's cutting-edge commitment to offering 100% renewable energy on a 24/7 hourly basis while reducing customers' energy rates, and to decarbonizing the State's transportation and building sectors. Prior to becoming CEO, Shawn served as PCE's first Chief Operating Officer.

Before joining Peninsula Clean Energy, Shawn was the Director of Market Development & External Affairs at Calpine Energy Solutions, expanding the company's west coast community choice aggregation (CCA) business to the northeast. From 2010-2020, Shawn served as founder and executive director of LEAN Energy US, a national organization that provides support and expertise for states and communities wishing to pursue CCA and/or start organizations like Peninsula Clean Energy.

As an early pioneer in the California energy choice movement, Shawn served on the task force and was founding Vice Chair of MCE Clean Energy, the first CCA in California and the first in the US with a clean energy mission. She is a former Mayor and councilmember from the City of Mill Valley and held several management positions at Federal Reserve Bank of San Francisco after having lived and worked for nearly a decade in Washington, DC.

Shawn received her undergraduate degree from University of CA at Davis and completed post graduate coursework at the Federal Reserve Board of Governors and most recently, UC Berkeley. She is the proud mother of twin sons and enjoys time spent in the great outdoors.



# Progress Seminar Presenters



## Jamillah Moore, Ed.D.

### Vice President for Student Affairs & Enrollment Management, San Francisco State University

Jamillah Moore, Ed.D., is vice president for Student Affairs & Enrollment Management at San Francisco State University. Previously, Dr. Moore served as the president of Cañada College in Redwood City from 2016 to 2021. At Cañada College, a few of her many accomplishments include establishing the campus' anti-racist framework, a program to support Latinx students with transfer pathways to San Francisco State and co-chairing the San Mateo County Community College District's Basic Needs Task Force.

Dr. Moore previously served as vice chancellor of Educational Services and Planning at the San Mateo Community College District, chancellor of the Ventura Community College District, president of Los Angeles City College, interim superintendent/president of Compton Community College and senior vice chancellor for Governmental and External Relations for the California Community College Chancellor's Office. She spent a decade as a legislative staffer and policy analyst in the California State Senate and is a former director of Governmental Relations for the Los Angeles County Office of Education.

A native Californian, Moore holds two degrees from California State University, Sacramento: a bachelor's degree in Communication and a master's degree in Intercultural Communication and Public Policy. She also earned a doctorate from the University of San Francisco in International and Multicultural Education.



## Ray Mueller

### Supervisor, County of San Mateo

In 2022, Supervisor Ray Mueller was elected to represent District 3 on the San Mateo County Board of Supervisors. In his first year on the job, Ray and his staff have rolled up their sleeves and dived into serving his community. Together they have responded to unprecedented challenges brought from winter storm systems and tackling public health safety issues facing the District. Supervisor Mueller has taken the lead in repairing coastal infrastructure and building healthy and safe farmworker housing.

Ray also serves on numerous boards of directors in his role for the County, including SamTrans, the Caltrain Peninsula Corridor Joint Powers Board, Peninsula Clean Energy, the San Mateo County Transit District and County Transportation Authority, Housing Our People Effectively, the San Mateo Health Commission, One Shoreline, the FEMA Emergency Food & Shelter Program Local Board and more.

Prior to his election to the Board of Supervisors he served 10 years as a City Councilmember, gaining re-election 3 times. Supervisor Mueller is a graduate of University of California, Hastings College of the Law and UC Berkeley and holds a certificate in Diversity and Inclusion from Cornell University's online platform, eCornell. A commitment to public service is shared in Ray's household, as his wife and high school sweetheart Kristen, was named public school administrator of the year in the San Mateo and San Francisco counties in 2015. Together they are raising their two school aged children and feel blessed to live in San Mateo County.



## Diane Papan

### Assemblymember, California State Assembly

Diane Papan was first elected to the California State Assembly in November 2022. She represents the 21st Assembly District, which includes the entire Bayside of San Mateo County from Brisbane to East Palo Alto. In the Assembly, Papan serves as Chair of the Assembly Committee on Water, Parks & Wildlife and serves on the Committees on Transportation and Governmental Organization.

Prior to her election to the State Assembly, Papan served as mayor and city councilmember for the City of San Mateo where she was a recognized regional leader championing investment in infrastructure, transit and climate adaptation among many policy pursuits.

Papan is a native of San Mateo County raised in both Daly City and Millbrae, California. She earned a B.A. in political science from the University of California, Los Angeles, in 1985 and a J.D. from the University of California, Hastings College of Law in 1988. Her career experience includes working as an attorney in several different firms, including her own private practice representing small businesses. She also works as an executive director of the nonprofit John's Closet in Daly City, California providing new clothing to children in need.

Papan and her husband Dan are proud parents of a teenage daughter.

# Progress Seminar Presenters



**Gina Papan**  
Councilmember, City of Millbrae

Gina Papan is a former three-term mayor of the city of Millbrae, and is unwavering in her commitment to serving the needs of the most vulnerable Californians and the people of her city. She grew up in Millbrae and graduated from Capuchino High School and the University of California, Santa Barbara, obtaining a degree in Business Economics. She earned her law degree from McGeorge School of Law and later completed the Senior Executives in State and Local Government program at Harvard University, Kennedy School of Government.

As a Millbrae City Councilmember, Gina champions disaster preparedness, community health, public safety, and quality of life services that protect children, families, local businesses, and economic vitality. She also serves as a Metropolitan Transportation Commissioner, and was recently appointed to serve on the Blue Ribbon Transit Recovery Task Force. Gina's prior work includes serving as a California Deputy Attorney General and former Deputy Director of a state agency, helping establish "Amber Alert" to locate missing children, funding programs to fight against elder and child abuse and establishing safe routes to schools.

In her spare time, Gina is a Director of John's Closet, a community nonprofit that has assisted over 20,000 underprivileged children and their families with free clothing, other basic needs, and scholarships.



**Dave Pine**  
Supervisor, County of San Mateo

Dave Pine was first elected to the San Mateo County Board of Supervisors in a special election in May 2011, and subsequently reelected in 2012, 2016 and 2020. He served as Board President in 2014, 2018 and 2023. He represents District 1 which includes Burlingame, Hillsborough, Millbrae, and portions of San Bruno and South San Francisco; the unincorporated communities of San Mateo Highlands, Baywood Park and Burlingame Hills; and the San Francisco Airport.

Supervisor Pine previously was a school board member for the Burlingame School District from 2003 to 2007 and the San Mateo Union High School District from 2007 to 2011. He is also a past president of the San Mateo County School Boards Association.

Before focusing his career on public service, Pine worked as an attorney representing start-up and high-growth technology companies. After working in private practice with Fenwick & West, he served as Vice President and General Counsel for Radius, Excite@Home, and Handspring.

Originally from New Hampshire, Pine is a graduate of Dartmouth College, where he was awarded a Harry S. Truman scholarship and was elected, at age 19, to the New Hampshire State House of Representatives. Following his undergraduate studies Pine earned his Juris Doctorate from the University of Michigan Law School.



**Thomas (Tom) Schnaubelt, PhD**  
Assistant Director, Center for Revitalizing American Institutions at the Hoover Institution at Stanford University

Tom Schnaubelt, PhD, is the Assistant Director of the Center for Revitalizing American Institutions at the Hoover Institution at Stanford University. While at Stanford, Tom has also been the Senior Advisor on Civic Education at the Deliberative Democracy Lab and the Center on Democracy, Development, and the Rule of Law, and the Executive Director of the Haas Center for Public Service. Prior to coming to Stanford in 2009, Tom served as Dean for Community Engagement & Civic Learning at the University of Wisconsin-Parkside, the founding Director of Wisconsin Campus Compact, and launched and led several national service and service-learning programs in Mississippi.



**Marlena Sessions**  
Director, NOVAWorks

Marlena Sessions began serving the City of Sunnyvale as Director of NOVAWorks in November 2021. Marlena has also served as Senior Vice President for Grant Associates, and as Chief Executive Officer for the Workforce Development Council of Seattle King County from 2009-2017.

Marlena has long advocated for career pathways and self-sufficiency for all and strategic talent pipeline development for all industries. She has testified in front of the U.S. Senate and House multiple times on these issues. Marlena currently serves on the California Workforce Association's Executive Committee. She also serves on the John J. Heidrich School of Workforce Development National Advisory Committee at Rutgers University.

Marlena holds a bachelor's degree from Whitworth University and a master of arts in Organizational Leadership from Gonzaga University. She is married to Paul Ringo and they have two children, Isabel and Isak.

# Progress Seminar Presenters



**Joe Simitian**  
Supervisor, County of Santa Clara

Santa Clara County Supervisor Joe Simitian represents the Fifth District which includes Cupertino, Los Altos, Los Altos Hills, Los Gatos, Monte Sereno, Mountain View, Palo Alto, Saratoga, Stanford, portions of San Jose and unincorporated communities in the Santa Cruz Mountains. He was elected to the Santa Clara County Board of Supervisors in 2012 and re-elected in 2016 and 2020.

Joe's previous public service includes election to the California State Senate and the California State Assembly, Mayor of Palo Alto, President of the Palo Alto School Board, and an earlier term on the Santa Clara County Board of Supervisors. He served as an election observer/supervisor in El Salvador and Bosnia and participated in refugee relief and resettlement efforts in Albania and Kosovo.

Raised in Palo Alto and a graduate of Palo Alto ("Paly") High, Joe's roots are in the South Bay and Midpeninsula. His community involvement includes service with local organizations such as Adolescent Counseling Services, Acterra, Leadership Mountain View, and the Markkula Center for Applied Ethics.

Joe received his bachelor of arts degree, with academic honors, from The Colorado College. He also holds a master of arts degree in International Policy Studies from Stanford University; a master's degree in City Planning degree from the University of California at Berkeley; and a law degree from the University of California at Berkeley.



**Mark Simon**  
Columnist, San Mateo Daily Journal

Mark Simon is a veteran journalist with more than 45 years of experience as a daily newspaper columnist, political writer and news reporter. He currently writes a weekly column on local news, politics and issues for the San Mateo Daily Journal. His journalism background has been enhanced by 15 years working in the public sector on special assignments, communications and executive management.

A fourth-generation native of San Francisco, Simon began his career at the San Diego Union and then joined Electronic News, a national newspaper that covered the emerging Silicon Valley technology industry. He subsequently worked for the Redwood City Tribune and the Peninsula Times Tribune (Palo Alto, CA) as a local, regional and national political reporter. He covered every race for Peninsula partisan office from 1976-1992, as well as six national conventions and several campaigns for president, governor and U.S. senator. In 1990, he became the lead daily columnist for the Times Tribune. In 1993, Simon joined the staff of the San Francisco Chronicle as an award-winning daily columnist covering Peninsula news, personalities and trends.

In 2004, Mark left the news business to join the staff of the San Mateo County Transit District as special assistant to the CEO. He subsequently held the position of Executive Officer for Public Affairs, and in 2015, he was named Chief of Staff, continuing his role as a strategic advisor to the CEO and the agency's three boards of directors. Mark retired from the transit district in late 2017 and launched his own writing and communications business, Simon Communications. For 18 months, he wrote a column online and in print for a Redwood City-based general interest magazine, Climate. He also has written extensively for San Francisco Magazine.

Mark serves on the board of directors of two nonprofit organizations: Bay Area Cancer Connections and Redwood City-based scholarship organization Sequoia Awards.



**Nicole Taylor**  
President and CEO, Silicon Valley Community Foundation

Nicole Taylor, President and CEO of Silicon Valley Community Foundation (SVCF), has been named to the inaugural Silicon Valley Business Journal Power 100 List, a roster of the most influential business people and leaders working in Silicon Valley.

Taylor has led SVCF in working with donors to build a culture of effective philanthropy with a focus on local giving. Taylor created a Community Advisory Council made up of 20+ local community leaders of color to help ensure a genuine understanding of the challenges their communities face, giving them a platform to continually influence the foundation's strategies, policies and grantmaking. Additionally, the foundation has shifted its strategy to provide more general operating support and capacity-building grants to support a broader range of organizations led by and serving people of color.

Recently, Taylor was named Inside Philanthropy's 2022 'Community Foundation Leader of the Year' for her work "righting the ship" at SVCF and "shifting its overall strategy to advance gender, racial and economic justice in the vastly unequal Silicon Valley." She was also included in the 2022 Forbes 50 Over 50-Impact list, which highlights women who are breaking barriers and achieving success over the age of 50.

Before SVCF, Taylor served as deputy vice president and dean of students at Arizona State University before serving as vice president of the ASU Foundation. Prior to her time at ASU, Taylor was the associate vice provost of student affairs and dean of community engagement and diversity at Stanford University, after serving as president and CEO of Thrive Foundation for Youth in Silicon Valley and president and CEO of the East Bay Community Foundation.

# Progress Seminar Presenters



**Annie Tsai**  
Chief Operating Officer, Interact

Annie Tsai serves the San Mateo County community as weekly columnist for the San Mateo Daily Journal and is on her second term with the Housing and Community Development Committee. By day, Annie is Chief Operating Officer at Interact, a marketing software company that launched its AI offering in 2022, and part-time partner at The House Fund.



**Van Ton-Quinlivan**  
CEO, Futuro Health

Van Ton-Quinlivan is a nationally recognized thought leader in workforce development and a catalyst for economic mobility through higher education. Her distinguished career spans the public, private, and nonprofit sectors.

Currently, Ton-Quinlivan is the CEO of Futuro Health, whose nonprofit mission is to improve the health and wealth of communities by growing the largest network of allied healthcare workers in the nation. She is an appointee of Governor Newsom to the Health Workforce Education and Training Council responsible for coordinating California's health workforce education and training to meet the state's needs.

In 2013, Ton-Quinlivan was named a White House Champion of Change under the Obama administration in recognition of her notable career in industry, education, and service as a community leader. She received the California Steward Leader Award in 2017 for her dedication to collaboration and work with public, private, and civic leaders to support economic and social mobility for state residents. From 2019-2022, she served as a mediaX Distinguished Visiting Scholar at Stanford University.

Ton-Quinlivan serves on the boards of the National Student Clearinghouse and Silicon Valley Community Foundation. She is a member of the International Women's Forum. Ton-Quinlivan is a podcast host and author of best-seller book, *WorkforceRx: Inclusive and Agile Strategies for Employers, Educators and Workers during unsettled Times*. Ton-Quinlivan and her family are residents of Menlo Park.



**Vishal Verma**  
General Partner, Edgewood Ventures, LLC

Vishal Verma is a General Partner at Edgewood Ventures, LLC. (a single-family office) and Redwood Collective, LLC. (a fund of funds for venture), and on the Board of Directors / Advisors of Darwin Ventures, Fortinet, Opthealth and Witt Security. Vishal is also a Senior Advisor to former U.S. House Democratic Leader Dick Gephardt and former U.S. Homeland Security Secretary Michael Chertoff on their International Strategy.

Vishal continues to be an active member of The Chicago Club and The Indus Entrepreneurs, and is also a member of the US India Cyber-Security Track 1.5 Dialogue hosted by the Council of Foreign Relations (CFR) and Observer Research Foundation (ORF).

Vishal is passionate about building strong education systems for our future, and serves as an active at the University of California at Merced. Vishal is a member of the Leadership Council at the RFK Foundation and a member of Best Buddies. Vishal holds a bachelor degree in science degree in Marketing from Santa Clara University and a master's degree in Business Administration in Finance from the University of Chicago Booth School Of Business.



**Kristine Zortman**  
Executive Director, Port of Redwood City

Kristine A. Zortman is the executive of the Port of Redwood City where she is responsible for implementing long-range organizational goals and policies for the seventh largest port in California. While serving in this role, Zortman has spearheaded several key initiatives that have positioned south San Francisco Bay's only deep-water port for long-term success. This includes developing the port's first-ever strategic vision plan, which will guide the port's development through 2025.

Zortman's port experience also includes eight years at the Port of San Diego where she worked on commercial real estate negotiations for cargo and maritime trade growth. She also served as vice president of neighborhood investment for Civic San Diego, a non-profit economic development agency. She began her career working in the environmental and biological realms for the National Park Service and Heitman Financial, a real estate investment management firm in Los Angeles.

Zortman was named the 2021 Chamber San Mateo County's Businesswoman of the Year; serves as president of the California Association of Port Authorities; and is a board member for the Bay Planning Coalition, California Marine Affairs & Navigation Conference, and the San Francisco Marine Exchange. Her unique ability to navigate the complex intersection of public and private interests has led to the successful implementation of pioneering policies, including cost recovery initiatives, environmentally conscious practices and unique development opportunities. She holds a degree in biology from George Mason University and has pursued graduate studies from the University of Utah and University of California Los Angeles.





Formerly San Mateo Credit Union

# Here is a nice chunk of *change*.

## Turn spending into *earning*.

Get a checking account that pays. Open a Premium Checking account through April 30. Earn \$50 for each of these requirements in the first calendar month after opening:

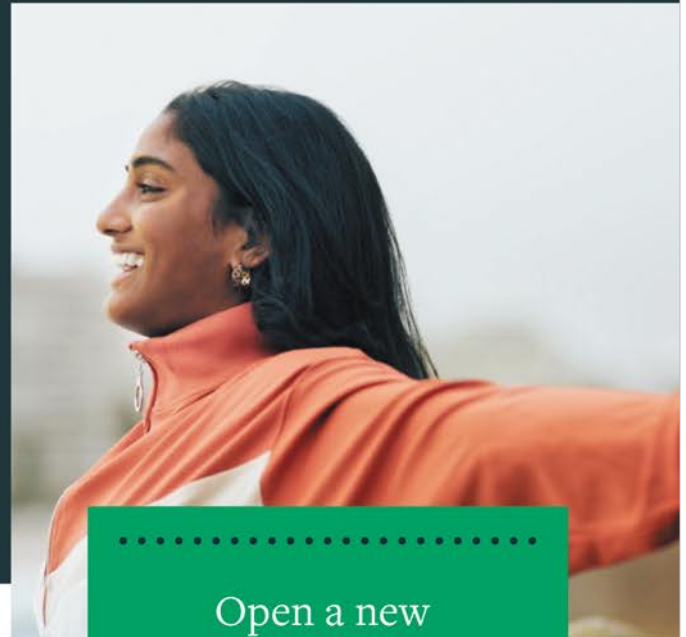
- Make 10 or more debit card transactions monthly.
- Have at least one monthly direct deposit, payroll deposit, or ACH transfer.
- Select to receive eStatements.

Achieve all three and enjoy a **\$150 cash bonus!**

### *What a difference a day makes!*

Enroll in direct deposit and receive your payroll deposit one day sooner.

**BANKING. LENDING. INVESTING IN YOU**



Open a new  
Premium Checking  
account by April 30  
and earn up to a

**\$150**  
**CASH BONUS\***

Get started by scanning or visiting  
[monterra.org/checking150](https://monterra.org/checking150)



To qualify for a \$50 cash bonus, open a new Monterra Credit Union Premium Checking account and meet the following requirements within the first full calendar month: Make 10 or more debit card transactions, have at least one monthly direct deposit, payroll deposit, or external ACH transfer, and select to receive eStatements. Joint accounts count as combined debit card purchases. Offer not available to existing Monterra Premium Checking account holders as of 2/25/2024. Limit one bonus-eligible checking account per member. Cash bonus paid within 31 days after the qualification period, provided the account has a positive balance. Monterra classifies the bonus as interest, and any applicable taxes are the account holder's responsibility. \*\*APY = Annual Percentage Yield and is effective as of 2/25/2024. Limit one Premium Checking account per member. Rates subject to change. Offer may change without notice. Conditions and restrictions apply.

Federally insured by NCUA.  
© 2024 Monterra Credit Union.



Meta is Proud to Sponsor  
Chamber San Mateo County's  
2024 Progress Seminar



# More pediatric practices than a toddler can count.

65 locations & virtual visits



Children's Health

[stanfordchildrens.org](https://stanfordchildrens.org)



# WELCOME TO STANFORD

## ENGAGE *with Stanford*

### WE LOOK FORWARD TO CONNECTING WITH YOU!

#### **Athletics and Recreation**

[gostanford.com](http://gostanford.com)

[dish.stanford.edu](http://dish.stanford.edu)

#### **Arts**

[arts.stanford.edu](http://arts.stanford.edu)

[museum.stanford.edu](http://museum.stanford.edu)

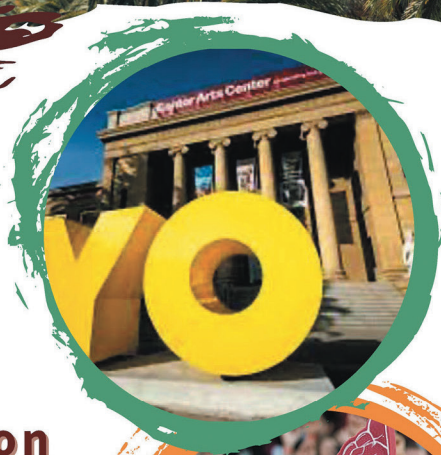
[live.stanford.edu](http://live.stanford.edu)

[anderson.stanford.edu](http://anderson.stanford.edu)

#### **Events and News**

[events.stanford.edu](http://events.stanford.edu)

[news.stanford.edu](http://news.stanford.edu)



PLAN YOUR VISIT AND CONNECT WITH OUR TEAM!

FOLLOW US @STANFORD:



**[community.stanford.edu](http://community.stanford.edu)**

# Supporting the community

## Because we're part of the community

When it comes to building stronger communities, there's strength in numbers. PG&E proudly supports Chamber San Mateo County's annual Progress Seminar. Together, we can achieve something better.



"PG&E" refers to Pacific Gas and Electric Company, a subsidiary of PG&E Corporation. © 2024 Pacific Gas and Electric Company. All rights reserved.





**Bringing people together for the greater good**  
– that's where transformation happens.

**We are proud to support San Mateo County's 55th Annual Progress Seminar**  
so that together we can help create a more equitable community.



**[siliconvalleycf.com](https://siliconvalleycf.com)**





## Working hand-in-hand with local partners to **build strength in our community.**

At Amazon, we look to leverage our scale for good to help strengthen local communities. That means combining our strengths with those of community partners, working together to find creative solutions that have a lasting impact. Thank you to **Chamber San Mateo County** for your impact in the community.

---

To learn more, visit [aboutamazon.com](https://aboutamazon.com)



# Exceptional care never stops.

Mills-Peninsula Medical Center



America's 50 Best Hospitals  
(Top 1%), 2024 | Healthgrades



[sutterhealth.org/mills](https://sutterhealth.org/mills)



LONGFELLOW

# Proud member of the Peninsula community

Longfellow's existing Bay Area portfolio has created over 2 million square feet of lab and office space with over 3 million square feet in the development pipeline, helping meet the need in key submarkets such as Redwood City, Millbrae, Palo Alto, San Mateo and more.

Research Triangle • Durham • Boston • New York City • Philadelphia • Rockville • San Diego • Bay Area • United Kingdom

Longfellow partners with leading universities, institutions and companies to deliver holistic real estate solutions for life sciences and technology organizations. We invest in and develop real estate assets to create transformational work environments. We provide leasing, facilities and property management services for our tenant partners.

[lfrep.com](http://lfrep.com)



THIS IS THE STORY OF

# LIONEL

who makes time to take  
the next generation of pilots  
under his wing.

Captain Lionel, San Francisco  
First Officer Eugene, Chicago

THIS IS THE STORY  
OF AN AIRLINE WHEN

# GOOD LEADS THE WAY

UNITED

© 2023 United Airlines, Inc. All rights reserved.  
Eugene was a First Officer at time of filming.



A STAR ALLIANCE MEMBER

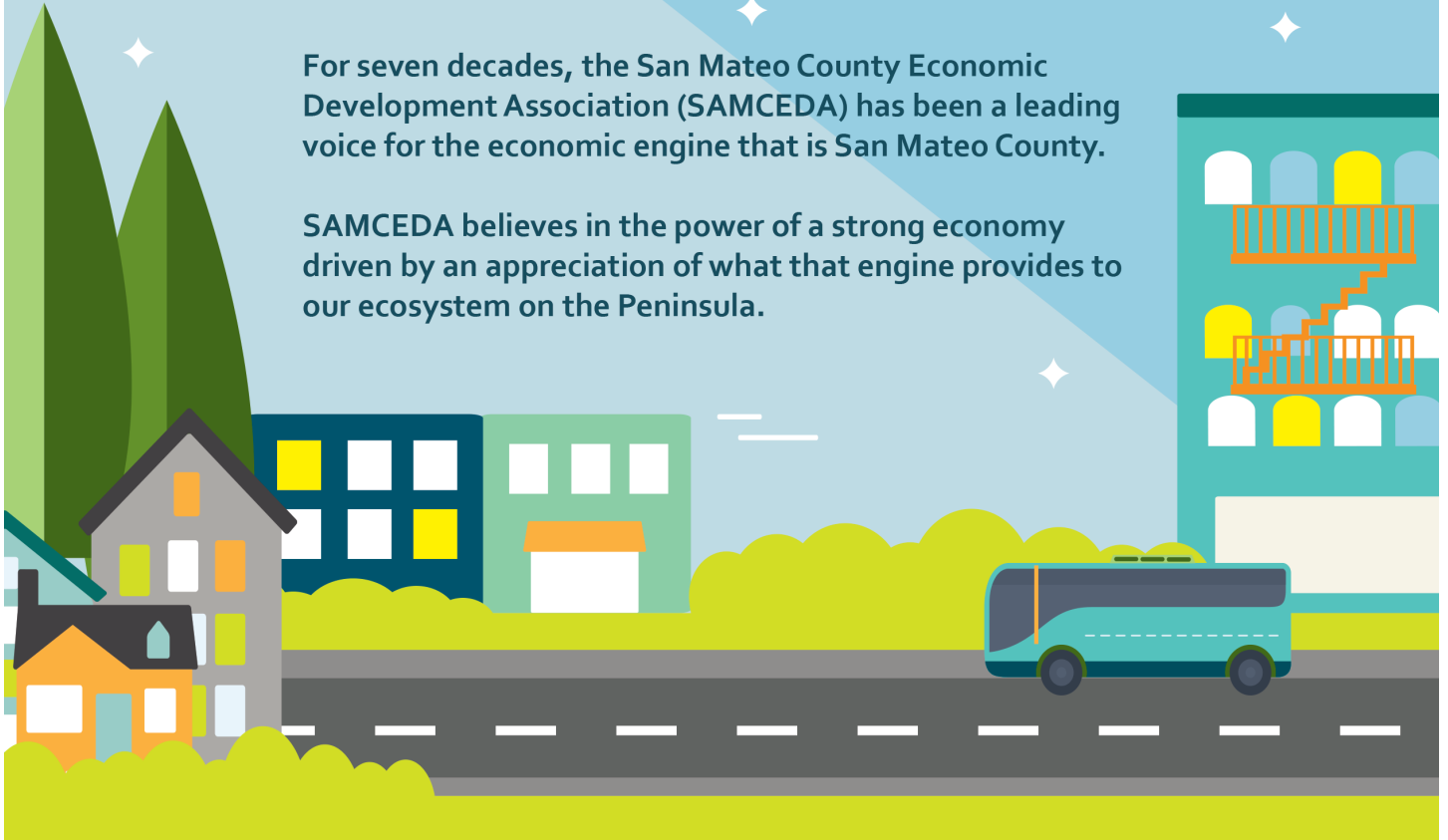


# SAMCEDA

San Mateo County Economic Development Association

For seven decades, the San Mateo County Economic Development Association (SAMCEDA) has been a leading voice for the economic engine that is San Mateo County.

SAMCEDA believes in the power of a strong economy driven by an appreciation of what that engine provides to our ecosystem on the Peninsula.



VISIT OUR  
WEBSITE



SAMCEDA  
ANNUAL UPDATE



FOLLOW US ON  
SOCIAL MEDIA

LEARN ABOUT OUR  
SIGNATURE EVENTS



REDEFINING THE  
NARRATIVE



"THRED"  
TALKS

71<sup>ST</sup> SAMCEDA  
ANNUAL MEETING

FEATURING "THRED TALKS"  
WEAVING OUR REGION TOGETHER



SAVE THE DATE  
TUESDAY, JUNE 25



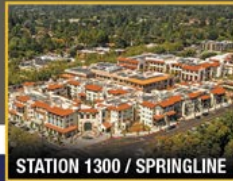


### BUILDING WHAT MATTERS™ SINCE 1975

W. L. Butler is a full-service general contractor committed to **Building What Matters** by creating relationships and providing superior quality and services that exceed expectations. We take enormous pride in the buildings we construct, the communities we support, and the long-term partnerships they are built on.

CA LIC. #355353 | CA LIC. #409080

[www.wlbutler.com](http://www.wlbutler.com)



650.361.1270

# Humankindness lives here.

At Dignity Health – Sequoia Hospital, you'll always be treated with heartfelt compassion and commitment. From minor emergencies to more serious issues, we are here to support you on your path to wellness.

Learn more about our comprehensive services at [DignityHealth.org/Sequoia](http://DignityHealth.org/Sequoia).



**Dignity Health.**  
Sequoia Hospital



## Care For All That is You

Health care should be hassle free.

At Kaiser Permanente it is. With connected teams and flexible ways to access care, it's easy to get the support you need to stay healthy.

Kaiser Permanente is a proud sponsor of Chamber San Mateo County's Annual Progress Seminar.

Learn more at [kp.org](http://kp.org)



**KAISER PERMANENTE®**



## Pick-A-Term Certificate

Up To **4.75%** APY\*

### Grow Your Money Quickly

- ✓ Secure 4.75% APY with a **3, 6, or 9 month term**
- ✓ Earn a 4.50% APY with a **12 month term**
- ✓ Take advantage of our limited-time offer

\*APY (Annual Percentage Yield). Rate effective March 26, 2024.

Penalty for early withdrawal may be assessed and may reduce earnings for all term share certificates. 3, 6, 9 or 12 Month Pick-A-Term Certificates: Limited time offer. Dividend rates are fixed for the term of the certificate and are not subject to a tiered rate. The minimum opening deposit is \$10,000. Deposits cannot be added to this certificate once it has been opened. Institutional deposits are not eligible. 3 Month Pick-A-Term Certificate will automatically renew to the 3 Month Pick-A-Term Certificate fixed rate. 6 Month Pick-A-Term Certificate will automatically renew to the 6 Month Pick-A-Term Certificate fixed rate and the 9 Month and 12 Month Pick-A-Term Certificates will renew to the 12 Month Pick-A-Term Certificate fixed rate in effect at that time.



Scan Me  
to Learn  
More



(877) 728-8472  
Providentcu.org/pickaterm

**PROVIDENT**  
CREDIT UNION

## TRANSITIONING TO 100% ZERO EMISSION FLEET



Zero Emissions, Infinite Possibilities



CALIFORNIA APARTMENT  
ASSOCIATION  
proudly supports the 2024  
Progress Seminar and the  
regional efforts to tackle our  
community's biggest challenges.

[www.caanet.org](http://www.caanet.org)

Google

LANE PARTNERS

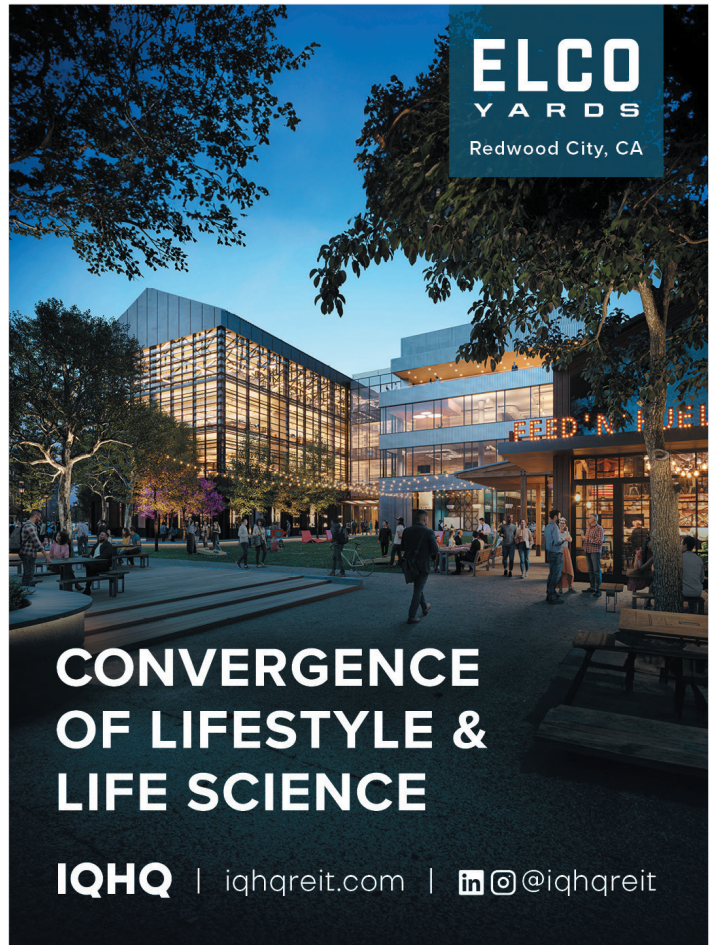


A proud member of the Redwood City community for more than 40 years.

**Helping  
our community  
recycle today  
for a better  
tomorrow.**

Visit [www.simsmm.com](http://www.simsmm.com) to learn more about us and our sustainability efforts.

**ELCO  
YARDS**  
Redwood City, CA



**CONVERGENCE  
OF LIFESTYLE &  
LIFE SCIENCE**

**IQHQ** | [iqhqreit.com](http://iqhqreit.com) | [in](#) [ig](#) @iqhqreit

# The **SOBRATO** Organization


Building a Strong and Vibrant  
Silicon Valley Community  
through Business and  
Philanthropic Leadership

***We appreciate your  
support for Caltrain  
Electrification.***

*Learn more about the future of  
Caltrain coming September 2024  
at [caltrain.com/electrification](http://caltrain.com/electrification)*







Mobile built  
for how you  
do business

COMCAST  
BUSINESS

**Savings** - See if you can save up to 75% a year on your wireless bill.

**Flexibility** - Easy to switch — bring your own eligible device with no annual contracts.

**Reliability** - Get mobile on the most reliable 5G network nationwide so you can be ready for what's next.

**Visit [ComcastBusiness.com/Mobile](https://ComcastBusiness.com/Mobile) to learn more.**

Savings comparison to weighted average of top 3 carriers based on optimized pricing. Comcast Business Internet required. After monthly data threshold included with your data option, speeds reduced. Data thresholds and actual savings vary. Restrictions apply. Not available in all areas. Comcast Business Mobile requires Comcast Business Internet service. Up to 20 lines. Pricing subject to change. In times of congestion, your data may be temporarily slower than other traffic. Actual savings vary and are not guaranteed. For Comcast Business Mobile Disclosures visit: [www.xfinity.com/mobile/policies/broadband-disclosures](https://www.xfinity.com/mobile/policies/broadband-disclosures). Comcast Business Mobile utilizes the network with the highest RootMetrics® 5G reliability rankings in 2H '23. WiFi not tested. Results may vary. Not an endorsement. © 2024 Comcast. All rights reserved.