



Celebrating 52 years of collaboration on regional issues!



Business, Government and Labor coming together for solutions

OCTOBER 29, 2021

8:45 AM - 11:30 AM

NOVEMBER 5, 2021

8:45 AM - 11:45 AM

2021 PROGRESS SEMINAR CO-CHAIRS

Assembly Speaker pro Tem Kevin Mullin
CA State Assembly, District 22

Rosanne Foust
President & CEO, SAMCEDA

Supervisor Carole Groom
San Mateo County Board of Supervisors, District 2

Julie Lind
Executive Secretary-Treasurer, San Mateo Labor Council

2021 PROGRAM SPONSORS

San Mateo County
TRANSIT DISTRICT



2021 Principal Sponsors





Help make your Comcast Business Internet more secure by adding Comcast Business SecurityEdge™.

Get a powerful all-in-one cybersecurity solution for your business.

Call or go to ComcastBusiness.com/SecurityEdge to learn more.

**COMCAST
BUSINESS**

Powering Possibilities™

Restrictions apply. Not available in all areas. Comcast Business SecurityEdge™ requires Comcast Business Internet and leased router for additional monthly charge. SecurityEdge™ does not prevent access to Internet sites if connected via public WiFi, virtual-private-network technology or non-Comcast DNS services. Call for restrictions and complete details. ©2021 Comcast. All rights reserved.

2021 PROGRESS SEMINAR SCHEDULE

FRIDAY, OCTOBER 29, 2021

8:45 - 9:00 AM

WELCOME

Amy Buckmaster, President & CEO, Chamber San Mateo County

9:00 - 10:15 AM

Leadership in a Crisis

PRESENTED BY



Mike Callagy, County Manager, County of San Mateo

Nancy Magee, Superintendent of Schools, San Mateo County Office of Education

Srija Srinivasan, Deputy Chief, San Mateo County Health

Moderated by Rosanne Foust, President & CEO, SAMCEDA

10:15 - 10:30 AM

BREAK

10:30 - 11:30 AM

Mental Health is Critical for Your Success

PRESENTED BY



Dr. Grace Gengoux, Ph.D., BCBA-D, Clinical Professor, Director of the Autism

Intervention Clinic & the Well-Being Director, Stanford University's Department of Psychiatry & Behavioral Sciences

Introduced by Rosanne Foust, President & CEO, SAMCEDA

FRIDAY, NOVEMBER 5, 2021

9:00 - 10:15 AM

Preparing for New Challenges: Wildfire Mitigation & Climate Resiliency

PRESENTED BY



Dan Belville, Director, San Mateo County Office of Emergency Services

Jonathan Cox, Deputy Chief, CAL FIRE San Mateo Division

Hilary Papendick, Climate Change Program Manager,
San Mateo County Office of Sustainability

Moderated by Julie Lind, Executive Secretary-Treasurer, San Mateo Labor Council

10:15 - 10:30 AM

BREAK

10:30 - 11:45 AM

CA Politics 2021- the Recall, Recovery, and Redistricting

Paul Mitchell, Political Consultant and Owner, Redistricting Partners

Mindy Romero, Director of the Center for Inclusive Democracy,
University of Southern California Sol Price School of Public Policy

Erica Walters, Partner, CleanSweep Campaign

Moderated by Assembly Speaker pro Tem Kevin Mullin

PRINCIPAL SPONSORS

FACEBOOK



PREMIER SPONSORS

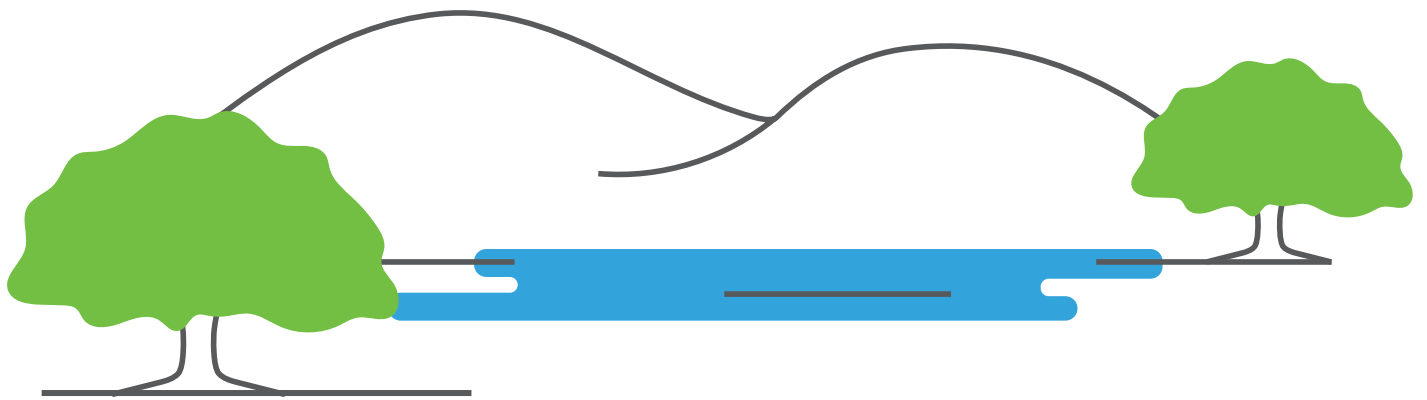


Stanford University





Recology is proud to sponsor the 52nd Annual Progress Seminar



Compost Changes Everything

- Improves Water Retention
- Boosts Soil Health
- Helps Fight Climate Change



2021 Progress Seminar Attendees



SEMINAR CO-CHAIRS

Kevin Mullin
Carole Groom
Rosanne Foust
Julie Lind

Speaker pro Tem, District 22
 District 2 Supervisor
 President & Chief Executive Officer
 Executive Officer

California State Assembly
 County of San Mateo
 SAMCEDA
 San Mateo Labor Council

By Alpha

<u>Attendee</u>	<u>Title</u>	<u>Representing</u>
Mark Addiego	Mayor	City of South San Francisco
Alicia Aguirre	Councilmember	City of Redwood City
Aaron Aknin	Principal	Good City Company
Adam Alberti	Managing Partner	Singer Associates
Valerie Alsip	Executive Vice President & COO	San Mateo Credit Union
Tom Ames	Board Member	San Mateo County Event Center
Cheryl Angeles	President & CEO	San Mateo Area Chamber of Commerce
Rhovy Lyn Antonio	Vice President of Public Affairs	California Apartment Association
Dillion Auyoung	Director of Government Affairs	Comcast
Wendi Baker	Principal	Harmonie Park Development
Michael Barber	Legislative Aide	Office of SMC Supervisor Dave Pine
Felicia Basques	Office Administrator	Chamber San Mateo County
Diana Bautista	Government Relations Manager	Stanford Children's Health /Lucile Packard Children's Hospital Stanford
Emily Beach	Councilmember	City of Burlingame
Alyn Beals	CEO & Co-Founder	Beals Martin
Sue Beckmeyer	Mayor	City of Pacifica
Lauren Berman	Project Manager	BKF Engineers
Shweta Bhatnagar	Senior Director of Government Affairs	Stanford University
Mary Bier	Mayor Pro Tem	City of Pacifica
Tygarjas Bigstyk	Councilmember	City of Pacifica
Jeffrey Birdwell	President - Commercial Division	Sares Regis Group of Northern California
Joanne Bohigian	Chair of the Board	Foster City Chamber of Commerce
Carlos Bolanos	Sheriff	San Mateo County Sheriff's Office
Rick Bonilla	Councilmember	City of San Mateo
Chelsea Bonini	Trustee	San Mateo County Office of Education
Christopher Bright	Campus Director - Redwood City	Stanford University
Shauntae Bronner	Development Administrator, Real Estate	Stanford University
Amy Buckmaster	President & CEO	Chamber San Mateo County
Raymond Buenaventura	Councilmember	City of Daly City
David Burruto	Chief of Staff	Office of SMC Supervisor Dave Pine
Mike Callagy	County Manager	County of San Mateo
Hector Camacho	President	San Mateo County Office of Education
Don Cecil	Principal	MC2 Bay Area Public & Gov't Affairs Consulting
Martina Center-Goodman	Director of Middle College	Skyline College
Alan Chamorro	Senior Vice President	Lowe
Erin Chazer	Assistant Executive Officer	San Mateo Labor Council
Sam Cheikh	Managing Director	Hines
Jennifer Chen	Economic Development Manager	City of San Mateo
Marie Chuang	Councilmember	Town of Hillsborough
Michael Claire	Chancellor	San Mateo County Community College District
Heather Cleary	CEO	Peninsula Family Service
Jim Cogan	Consultant	AgTech Ventures, LLC
James Coleman	Councilmember	City of South San Francisco
Ron Collins	Councilmember	City of San Carlos
Marah Curry	Director, Operations & Administration	Foster City Chamber of Commerce
Carrie Dallman	Legislative Aide	Office of SMC Supervisor Don Horsley
Roderick Daus-Magbual	Vice Mayor	City of Daly City
Fran Dehn	President & CEO	Menlo Park Chamber of Commerce

2021 Progress Seminar Attendees



SEMINAR CO-CHAIRS

Kevin Mullin
Carole Groom
Rosanne Foust
Julie Lind

Speaker pro Tem, District 22
 District 2 Supervisor
 President & Chief Executive Officer
 Executive Officer

California State Assembly
 County of San Mateo
 SAMCEDA
 San Mateo Labor Council

By Alpha

Attendee

Tammy Del Bene
 Monica Devincenzi
 John Donahoe
 Emily Douglas
 Carrie Du Bois
 Steve Elliott
 Lissette Espinoza-Garnica
 Jessica Eva
 Maggie Fahey
 Christina Falla
 Georgia Farooq
 Nicole Fernandez
 Casey Finch
 Joe Fitzgerald
 Eddie Flores
 John Fong
 John Ford
 Anders Fung
 Mike Futrell
 Dani Gasparini
 Jeff Gee
 Beverly Gerard
 Alane Gilbrech
 Tom Gilman
 Rich Ginn
 Joe Goethals
 Javier Gonzalez
 Maurice Goodman
 Bill Graham
 Deanne Green
 Greg Greenway
 John Gutierrez
 Lennies Gutierrez
 Giselle Hale
 Maia Harris
 Jim Hartnett
 Marc Hershman
 Beth Hester
 Reuben Holober
 Richard Holober
 Christopher Hom
 Dave Hopkins
 Diane Howard
 Chip Huggins
 Brae Hunter
 Chris Hunter
 Davina Hurt
 John Hutar

Title

Senior Administrative Manager
 Municipal Relationship Manager
 Director, Planning and Entitlements
 Senior Program Development Manager
 Board of Trustees Vice President
 Managing Director
 Councilmember
 President-Elect
 Marketing, Programs, & Communications Manager
 Legislative Aide
 Executive Director
 District Director
 Associate
 Assistant Business Manager
 Councilmember
 Partner
 Executive Director
 Councilmember
 City Manager
 Owner
 Division Manager/General Manager & Vice President
 Trustee
 Executive Officer/Office Manager
 President
 Trustee
 Councilmember
 Head of Local Government Affairs & Public Policy
 Trustee
 President
 Director of Community Development
 Executive Director
 Senior Director of Regulatory Affairs
 Director of Government Affairs
 Vice Mayor
 Director, Special Projects
 CEO
 Director of Government Affairs
 Vice President of External Affairs
 Councilmember
 Trustee
 Director, Real Estate & Facilities
 COO, Residential Development
 Mayor
 President & CEO
 Legislative Aide
 Chief of Staff
 Councilmember
 President & CEO

Representing

Recology San Mateo County
 Republic Services
 Stanford University
 ENGIE Services
 Sequoia Union High School District
 Stanford University
 City of Redwood City
 SAMCAR
 Chamber San Mateo County
 Office of SMC Supervisor Carole Groom
 Thrive Alliance
 Office of Senator Josh Becker
 Hines
 IBEW Local 617
 City of South San Francisco
 Kenson Ventures
 Commute.org
 City of Millbrae
 City of South San Francisco
 GB Consulting
 Swinerton Management & Consulting
 San Mateo County Office of Education
 SAMCAR
 DES Architects + Engineers
 Sequoia Union High School District
 City of San Mateo
 Google
 San Mateo County Community College District
 Sequoia Hospital Dignity Health
 Thomas James Homes
 Seaport Industrial Association
 Comcast
 Comcast
 City of Redwood City
 Jay Paul
 HJSR Solutions LLC
 Peninsula Clean Energy
 Comcast
 City of Millbrae
 San Mateo County Community College District
 Facebook
 Sares Regis
 City of Redwood City
 Hope Services
 Office of SMC Supervisor Don Horsley
 Office of SMC Supervisor Don Horsley
 City of Belmont
 San Mateo County/Silicon Valley CVB

2021 Progress Seminar Attendees



SEMINAR CO-CHAIRS

Kevin Mullin
Carole Groom
Rosanne Foust
Julie Lind

Speaker pro Tem, District 22
District 2 Supervisor
President & Chief Executive Officer
Executive Officer

California State Assembly
County of San Mateo
SAMCEDA
San Mateo Labor Council

By Alpha

Attendee

Ray Iverson
Nori Jabba
Matt Jacobs
Dawn Jedkins
Connie Juarez-Diroll
Sean Kali-rai
Ellen Kamei
Lorianna Kastrop
Mike Kastrop
Alex Khojikian
Suzanne Knowlton
Olya Krasnykh
Paul Krupka
Marjorie Lassen-Hoch
Amourence Lee
Warren Leiberma
Kitty Lopez
Alisa MacAvoy
Nancy Magee
Juslyn Manalo
Julia Mates
Carter Mau
Stan Maupin
Kate Mosley
Ray Mueller
Mark Muenzer
Seamus Murphy
Mark Nagales
Anu Natarajan
Buenaflo Nicolas
Liza Normandy
Simon North
Michael O'Neill
Fergus O'Shea
Larisa Ocañada
Mitchell Oster
Christine Padilla
Wade Painter
Diane Papan
Gina Papan
Mary Morrissey Parden
Kathy Parmer-Lohan
Laura Parmer-Lohan
Alex Parnia
John Pimentel
Dave Pine
Kirsten Pinochi
Kristine Piñon

Title

Fire Chief
Compliance and Business Development Manager
Community and Government Relations Manager
Associate Principal
Legislative Officer
President/Founder
External Affairs Area Manager
Commissioner
Founder / Principal Architect
Assistant City Manager
Vice President, Marketing & Community Relations
Assistant Vice President
Principal
Senior Director of Business Marketing
Councilmember
Councilmember
Executive Director
Board of Trustees President
Superintendent of Schools
Mayor
Vice Mayor
Acting General Manager/CEO
CEO
Owner
Councilmember
Community Development & Transportation Director
Executive Director
Vice Mayor
Housing Initiative Lead
Councilmember
CEO
Principal
Councilmember
Director, Campus Development
Marketing, Communications & Operations Manager
Community Relation Manager
Director
President & CEO
Councilmember
Councilmember
President & Board Member
Executive Director
Mayor
Vice President, Marketing & Enrollment Services
Trustee
Supervisor, District 1
General Manager
President & CEO

Representing

Redwood City Fire Department
HIP Housing
Kaiser Permanente
DES Architects + Engineers
County of San Mateo
Silicon Valley Cannabis Alliance
AT&T
Port of Redwood City
The Kastrop Group, Inc. Architects
City of Redwood City
San Mateo Credit Union
Sares Regis
Krupka Consulting
Comcast
City of San Mateo
City of Belmont
First 5 San Mateo County
Redwood City School District
San Mateo County Office of Education
City of Daly City
City of Belmont
San Mateo County Transit District
Maupin Consulting, LLC
OrangeTheory Fitness
City of Menlo Park
City of Redwood City
SF Bay Area Water Emergency Transportation Authority
City of South San Francisco
Facebook
City of South San Francisco
South San Francisco Chamber of Commerce
BKF Engineers
City of Pacifica
Facebook
SAMCEDA
San Mateo Credit Union
Build Up for San Mateo County's Children
San Mateo Credit Union
City of Millbrae
City of San Mateo
Belmont Chamber of Commerce
San Carlos Education Foundation
City of San Carlos
Notre Dame de Namur University
San Mateo County Community College District
County of San Mateo
Recology San Bruno/Recology Peninsula Services
San Bruno Chamber of Commerce

2021 Progress Seminar Attendees



SEMINAR CO-CHAIRS

Kevin Mullin
Carole Groom
Rosanne Foust
Julie Lind

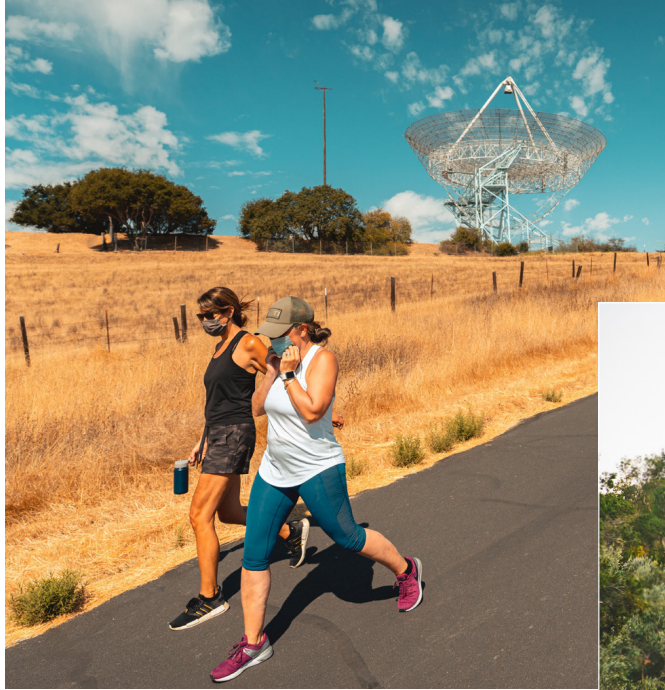
Speaker pro Tem, District 22
 District 2 Supervisor
 President & Chief Executive Officer
 Executive Officer

California State Assembly
 County of San Mateo
 SAMCEDA
 San Mateo Labor Council

By Alpha

<u>Attendee</u>	<u>Title</u>	<u>Representing</u>
Josh Portner	Director, Real Estate District Development	Google
Rebecca Prozan	Head - West Coast Region, Gov't Affairs & Public Policy	Google
Mario Puccinelli	Executive Vice President & COO	Recology
Gina Quiney	Legislative Aide	Office of SMC Supervisor Carole Groom
Ashley Quintana	Public Policy Manager	Facebook
Veronica Ramirez	City Attorney	City of Redwood City
Diana Reddy	Councilmember	City of Redwood City
Mario Rendon	District Director	Office of Assembly Speaker Pro Tem Kevin Mullin
Alex Rinear	Lead Waste Zero Specialist	Recology San Mateo County
Heather Rockwood	Waste Zero Specialist	Recology San Mateo County
Eric Rodriguez	Mayor	City of San Mateo
Mia Rossi	Waste Zero Manager	Recology San Mateo County
James Ruigomez	Vice President	San Mateo Labor Council
Kalimah Saladdah	Trustee	Jefferson Union High School District
Juan Salazar	Director of Local Policy & Community Engagement	Facebook
Nicole Sandkulla	CEO	Bay Area Water Supply & Conservation Agency
Sherri Sager	Senior Vice President & Chief Government Relations Officer	Lucile Packard Children's Hospital Stanford
Alan Sarver	Board of Trustees President	Sequoia Union High School District
Ann Schneider	Mayor	City of Millbrae
Dan Shea	Group Manager	Recology San Francisco and South Groups
Lena Silberman	Legislative Aide	Office of SMC Supervisor Don Horsley
Lisa Carol Simpson	Associate Director, Campus Services	Stanford University
Niraj Singh	COO	Kaiser Permanente
Michael Smith	Councilmember	City of Redwood City
Sierra Sousa	Development Associate	The Sobrato Organization
Shawneece Stevenson	Trustee	Sequoia Union High School District
Melissa Stevenson Diaz	City Manager	City of Redwood City
Dana Stoehr	CEO	San Mateo County Event Center
Charles Stone	Mayor	City of Belmont
Rochelle Swanson	Government Affairs Manager	Cornw Castle
Glenn Sylvester	Councilmember	City of Daly City
Sonja Tappan	Vice Chair - Finance	Foster City Chamber of Commerce
Judy Taylor	Member	SAMCAR
Chris Thomsen	Trutee	Sequoia Union High School District
Auggie Torres	Community Engagement Manager, State Policy	Facebook
Randy Torrijos	Legislative Aide	Office of SMC Supervisor Dave Pine
Sue Vaterlaus	Councilmember	City of Pacifica
Andrea Vizenor	Dean - Strategic Partnerships & Workforce Development	Skyline College
Simon Vuong	Economic Development Manager	City of Redwood City
Stacey Wagner	Public Affairs Director	Kaiser Permanente
Lucy Wicks	Assistant Vice President, Government Affairs	Stanford University
Tom Williams	City Manager	City of Millbrae
Dr. Darnise Williams	Superintendent	Sequoia Union High School District
Gina Zari	Government Affairs Director	SAMCAR
David Zigal	President	SAMCAR
Kristine Zortman	Executive Director	Port of Redwood City

Welcome!



Walking at the Stanford Dish.

Visit our Stanford campuses now to discover, experience and create right in your own backyard.



San Francisco Ballet performing at the Frost Amphitheater.



Stanford Women's Basketball: 2021 NCAA Champions.

Every day Stanford offers community activities and services such as **classes, concerts, art galleries, family days, eateries, sports, health care, hiking** and more.

Open a world of opportunity by learning more about the free and affordable resources available to you at Stanford.

Connect with us:

Subscribe to our community newsletter at: foryou.stanford.edu

Find out more at: community.stanford.edu

Follow us on social media: [@stanford](https://twitter.com/stanford)

Stanford

2021 PROGRESS SEMINAR Co-Chairs

State Assemblymember and Speaker pro Tempore Kevin Mullin California State Assembly, District 22



Kevin Mullin is Speaker pro Tem of the California State Assembly, and has represented San Mateo County since 2012. He was born and raised in San Mateo County and is a 4th generation Californian. His legislative priorities have focused on elections reform and democracy, housing and transportation, clean energy and climate resiliency. He has championed All-Vote-By-Mail elections, and was author of the landmark DISCLOSE Act so voters can easily see who is paying for political advertisements on TV and social media.

He has been a mayor and councilmember in South San Francisco, a small business owner, and television host and commentator. He graduated from Serra High School and the University of San Francisco and has a master's degree from San Francisco State University. He studied leadership at Harvard's Kennedy School of Government and has served as an aide to his political mentors, Congresswoman Jackie Speier when she was a state legislator, and his father, former Assemblymember Gene Mullin.

Kevin and his wife Jessica live in South San Francisco with their twin boys, Liam & Landon.

Supervisor Carole Groom San Mateo County Board of Supervisors, District 2 Supervisor



Carole Groom was elected to the Board of Supervisors in June 2010, served as President of the Board in 2011 and 2015. Prior to Supervisor Groom's appointment in 2009, she served nine years on the San Mateo City Council, including two terms as Mayor, and on the San Mateo Planning and Public Works Commissions.

Supervisor Groom's legislative priorities include expanded access to quality preschool and literacy, improved access to healthcare for all, environmental protection, preservation of County's parks, and growing the local economy. In December 2012, she was appointed to the California Coastal Commission by then California State Assembly Speaker, John Perez.

In 2009 she launched "Active San Mateo County," which convenes an annual Fall conference that explores the health and wellbeing of residents through planning, recreation, and policy, as well as the annual countywide event, "Streets Alive! Parks Alive!" In 2012, the San Mateo County Parks & Recreation Directors Association honored her for her efforts with their "Champion of the Community" award.

Since 2011, she has worked with the San Mateo County Office of Education and Silicon Valley Community Foundation to increase the reading proficiency of third graders countywide. This initiative, called The Big Lift, was formally launched in 2013 and seeks to raise the reading proficiency of third grade students in San Mateo County from 58% to 80% by 2020 through key interventions including access to preschool, inspiring summer experiences, reducing chronic absenteeism and increasing family engagement from preschool to third grade.

In 2014, Supervisor Groom and Supervisor Dave Pine began the process of establishing Peninsula Clean Energy (PCE), a community choice energy program to provide consumers with an option for more renewable energy sources. With the support of the Board of Supervisors and participation of all 20 San Mateo County cities, a feasibility study was completed in 2015 and, in 2016, the Joint Powers Authority was formally created to launch Peninsula Clean Energy. In 2017, PCE served over 288,000 residential and business accounts across San Mateo County.

Her professional experience includes 18 years as a Vice President of Mills-Peninsula Health Services. She also serves on the Boards of Directors of the San Mateo Police Activities League and Leadership San Mateo/Foster City/Burlingame/Hillsborough. Supervisor Groom resides in the city of San Mateo.

2021 PROGRESS SEMINAR Co-Chairs

Rosanne Foust

President & Chief Executive Officer

SAMCEDA - San Mateo County Economic Development Association



As the President & CEO of the San Mateo County Economic Development Association (SAMCEDA), Ms. Foust is a leading voice of the business community in San Mateo County and across the Bay Area on issues important to maintaining a strong local and regional economy, attracting and retaining major employers and good jobs, and creating partnerships between business and government to address the critical issues of affordable housing, mobility improvements, and maintaining a good quality of life.

Previously, Ms. Foust had a twenty-year career with Alsace Development International USA, Inc. As Executive Vice President & Treasurer of the Corporation she managed offices in Boston, Los Angeles, Redwood City and Sydney, Australia.

Ms. Foust served for twelve years on the City Council in Redwood City, including as Mayor and Vice Mayor. During her tenure she successfully negotiated the Development Agreement to bring Stanford University to the community, oversaw the building of a brand new Public Library in Redwood Shores, and approved a \$90 million recycled water plant and secured funding to restore Bair Island. She is also credited with working tirelessly on Redwood City's Downtown Precise Plan which served as the catalyst for the transformation of Redwood City's downtown. Ms. Foust also served on the boards of the San Mateo County Transportation Authority for ten years, five as Chair and seven years on the San Francisco Bay Restoration Authority.

Today Ms. Foust serves on the boards of the Bay Area Council Economic Institute, First Five San Mateo County, NOVA-Workforce Investment Board which encompasses northern Santa Clara County and San Mateo County, the Redwood City Improvement Association, Peninsula Television, Casa de Redwood-senior affordable housing complex, and Chamber San Mateo County.

Ms. Foust holds an MA in Public Administration; BA in International Studies and Economics; completed multiple Executive Education programs at Stanford University's Graduate School of Business and the Executive Management program at UCLA's Anderson Graduate School of Management.

Ms. Foust has been honored by the San Francisco Business Times as one of the "Most Influential Women in Business in the Bay Area" from 2009 until the present.

Julie Lind

Executive Treasurer-Secretary

San Mateo Labor Council



Julie Lind is a fourth-generation union member, and is proudly in her tenth year with the San Mateo Labor Council and as a member of the Office and Professional Employees International Union Local 29. Julie began her career working as a legislative staffer, first with Congresswoman Zoe Lofgren, then Assemblywoman Rebecca Cohn and finally with Senator Ellen Corbett.

Julie came to the San Mateo Labor Council in 2010 as the Political Director, and took over as the head of the organization in the Fall of 2016. Julie currently serves as a member of the State Federation/Central Labor Council Advisory Committee to the AFL-CIO, Chair of the Board of the San Mateo County Union Community Alliance, Co-Chairs the San Mateo Labor Paper Editorial Board, is a member of the CA Labor Federation Strategic Planning Committee, the UC Berkeley Labor Center Advisory Board, the Labor Occupational Health Project Advisory Board, and was part of the San Mateo County Charter Review Commission in 2018. Julie also received the 2020 Mayor's Award from the City of San Mateo. Julie has a BA in English and a Master's

Administration from San Jose State University, is a 2008 graduate of Emerge California, a 2020 graduate of Leadership Redwood City, - Belmont - Menlo Park - San Carlos, serves on the County's Economic Recovery Committee of the COVID-19 related County Recovery Initiative, and is a member of the board of the Boys and Girls Club of North San Mateo County.

2021 PROGRESS SEMINAR Panelists

Friday, October 29, 2021

Leadership in a Crisis

PANELISTS



MIKE CALLAGY, County Manager, County of San Mateo

As County Manager, Mike Callagy oversees the efficient running of daily County operations and carries out policies established by the Board of Supervisors. Mike joined the County in 2013 as a Deputy County Manager and was named Assistant County Manager in April 2016. In November 2018, he assumed the role of County Manager after being appointed by the Board of Supervisors.

Mike has more than 35 years of public sector service experience. Before joining the County, Mike spent 29 years with the San Mateo Police Department where he ran day-to-day operations as the deputy police chief until his retirement. He is a licensed attorney in the state of California and in addition to his law degree from Santa Clara University, holds a Bachelor of Arts and Master's in public administration from the College of Notre Dame and a Master's in homeland defense and security from the Naval Postgraduate School.

A San Mateo County native, he lives in Foster City with his family.



NANCY MAGEE, Superintendent of Schools, San Mateo County Office of Education

Bringing 37 years of educational experience and leadership to her role, Superintendent Magee has served as the elected County Superintendent since 2018. As county superintendent she both supports the San Mateo County Office of Education (SMCOE) and provides expertise and technical assistance to San Mateo County's 23 public school districts. Superintendent Magee is deeply committed to equity in education and believes that for students to truly thrive in their future, our communities must work together every day to achieve social, racial, and environmental justice.

Superintendent Magee began her career as a 20-year high school English teacher. As district administrator, she managed a federal Readiness and Emergency Management for Schools (REMS) grant serving six San Diego County school districts which prepared her to create and lead the San Mateo County Coalition for Safe Schools and Communities. Under her leadership, the Coalition has developed and implemented emergency response and suicide prevention protocols, an active student threat assessment team, and provided training for educators in the prevention of sexual exploitation of students, all now the gold standard in San Mateo County.

In close partnership with San Mateo County Health, Superintendent Magee has led San Mateo County's COVID-19 response for schools, supporting safe protocols for the return to in-person learning, advancing digital connectivity, supporting additional resources for mental health recovery, and helping to facilitate vaccinations for staff and students. Her regional leadership includes service as a First 5 Commissioner, co-chair of the Child Care Partnership Council, a core leader of The Big Lift, and as an advocate for workforce housing with the Home for All Steering Committee and as a board member of The Housing Endowment and Regional Trust (HEART).

2021 PROGRESS SEMINAR Panelists



SRIJA SRINIVASAN, Deputy Chief, San Mateo County Health

Srija Srinivasan is the deputy chief of San Mateo County Health, supporting the operations of its divisions and programs. Under her leadership, San Mateo County Health has reduced the number of uninsured residents, piloted innovative approaches to health care delivery, reduced the burden of persistent health disparities, and partnered with stakeholders to create more equitable communities.

Srinivasan joined the San Mateo County Health executive team thirteen years ago to direct the newly forming Planning and Policy unit, which was launched to address strategic health issues in partnership with the community.

She has more than twenty years' experience in health policy and community health issues and has served in senior roles in the public, nonprofit, and philanthropic sectors.

Srinivasan has a bachelor's degree in human biology and a MBA from Stanford University.

She grew up in Lawrence, Kansas, and is a big fan of University of Kansas Jayhawks basketball. She enjoys early morning runs.





~SAN MATEO~
CREDIT UNION

San Mateo County is our home, too.

We proudly support the communities we serve.

Since 1952, San Mateo Credit Union has been dedicated to serving our members and keeping our communities strong.

Whether it's for you or your employees, membership with San Mateo Credit Union pays dividends: checking, savings, auto loans, home loans, credit cards, and a commitment to financial education and community support.

Ready to make the switch to not-for-profit banking?

Join or offer SMCU to your employees today!

(650) 562-1282 | communityrelations@smcu.org



2021 PROGRESS SEMINAR Keynote

KEYNOTE SPEAKER

Mental Health is Critical for Your Success



GRACE GENGOUX, Ph.D., BCBA-D, Clinical Professor, Director of the Autism Intervention Clinic & the Well-Being Director, Stanford University's Department of Psychiatry & Behavioral Sciences

Grace Gengoux, Ph.D., BCBA-D, is a Clinical Professor, Director of the Autism Intervention Clinic, and Well-being Director for the Department of Psychiatry and Behavioral Sciences at Stanford University. Dr. Gengoux has co-authored a book focused on professional well-being and practical strategies to promote resilience for providers of mental health care. In her work as Department Well-being Director, Dr. Gengoux leads a taskforce charged with developing solutions to combat burnout by improving efficiency of practice and cultivating a stronger culture of wellness in the Department of Psychiatry. Dr. Gengoux is also a licensed clinical psychologist with expertise in naturalistic developmental behavioral intervention for children with Autism Spectrum Disorder. Dr. Gengoux serves as Associate Editor for the Journal of Positive Behavior Interventions. Dr. Gengoux received her Ph.D. in Clinical Psychology from the University of California Santa Barbara and completed her clinical internship and postdoctoral fellowship at the Yale Child Study Center, before joining the Stanford University School of Medicine clinical faculty in 2010.





Jay Paul Company is a proud sponsor of the 2021 Chamber San Mateo County Progress Seminar.



As a commercial real estate developer, Jay Paul is committed to positively impacting the communities where we live and work.

2021 PROGRESS SEMINAR Panelists

Friday, November 5, 2021

Preparing for New Challenges: Wildfire Mitigation & Climate Resiliency

PANELISTS



JONATHAN COX, Deputy Chief, CAL FIRE San Mateo Division

Jonathan oversees fire operations at the San Mateo County Division of CAL FIRE, which includes San Mateo County Fire Department and Coastside Fire Protection District.

His passion for the fire service started young, prior to his current role he worked both municipal and wildland fire field operations with CAL FIRE at Coastside Fire District, San Mateo County Fire Department and San Luis Obispo County Fire Department.

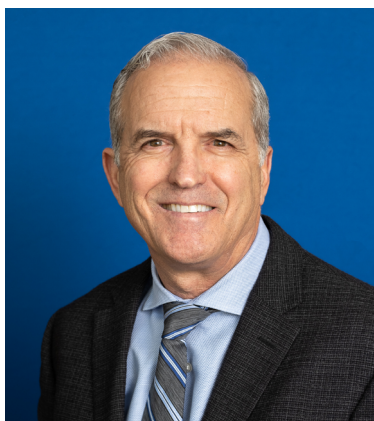
In addition, he spent several years as the Northern California spokesperson for CAL FIRE. Jonathan was also a founding member for CAL FIRE's land use planning program at the Office of the State Fire Marshal (OSFM), working with local jurisdictions to make informed land use decisions related to the threat of wildfire.

Jonathan also responds to, and manages, some of California's largest disasters. He spent five years as a member of CAL FIRE's Incident Management Team 6 (FEMA Type 1), where he served on the command staff in the capacity of Public Information Officer (PIO1).

He holds a Bachelors Degree from Cal Poly, San Luis Obispo and a Masters Degree from the University of Copenhagen, Denmark. He has also completed an intensive training at the United Nations Institute for Training and Research (UNITAR) in Geneva, Switzerland. Jonathan is a State of California (OSFM) certified Chief Officer and Registered Instructor.

Additionally, Jonathan is an emergency response educator and trainer in the field of emergency management and crisis communications. He has been a subject matter expert speaker at numerous conferences, including the National Fire Protection Association. His work has spanned five countries and involved working with hundreds of professionals.

He has lived in the US, Denmark and the United Kingdom.



DAN BELVILLE, Director, San Mateo County Office of Emergency Services

Bio coming soon.

2021 PROGRESS SEMINAR Panelists



HILARY PAPENDICK, Climate Change & Adaption Program Manager, San Mateo County Office of Sustainability

Hilary Papendick is the Climate Change & Adaptation Program Manager at San Mateo County Office of Sustainability. She holds a Master of Public Administration and Master of Science with an emphasis on climate change & coastal management. Hilary works on efforts to prepare the county for climate change impacts and reduce greenhouse gas emissions from county operations and unincorporated areas. She led the development of the 2018 San Mateo County Sea Level Rise Vulnerability Assessment. In addition, Hilary oversaw the development of the County's Government Operations Climate Action Plan, one of the most aggressive in the state, and is currently overseeing the update of the Community Climate Action Plan for unincorporated areas. She is passionate about inclusive community engagement, and working toward ensuring climate resilient, equitable communities in San Mateo County and beyond.

Hilary previously worked for the California Coastal Commission, where she focused on developing a sea level rise policy guidance document. In her free time, Hilary loves mountain biking and spending time at the beach with her daughter, husband, and dog.

CA Politics 2021- the Recall, Recovery, and Redistricting

PANELISTS



PAUL MITCHELL, Political Consultant & Owner, Redistricting Partners

Mitchell has conducted the redistricting for more than 35 cities, school boards and community college districts, including the Los Angeles Unified School District, and most recently, the Cities of Santa Ana, Davis and Napa. The firm's work on racially polarized voting analysis and demographics has aided dozens of agencies as they navigate the California and Federal Voting Rights Acts.

Mitchell also works with nonprofit organizations, such as the Irvine Foundation, American Civil Liberties Union, the Advancement Project, and others in building community engagement and working throughout California on elections and voting issues.

Mitchell has been regularly cited in the media as an expert on elections and redistricting, including as the subject of a CNN Presents special on the decennial redistricting process, being interviewed on the PBS News Hour election coverage in 2020, participating in the 538 Podcast series on redistricting reform, and as a regular analyst on California-based network TV election coverage.

For the past 8 years, Mitchell has also served as Vice President of the bi-partisan Political Data Inc where he works with both political parties, campaigns, nonprofits and universities, with a specialty in polling and survey data.

Mitchell earned his Associate's Degree from Orange Coast College, an Undergraduate from American University, and a Master's in Public Policy from USC.

2021 PROGRESS SEMINAR Panelists



MINDY ROMERO, Director of the Center for Inclusive Democracy, University of Southern California Sol Price School of Public Policy

Mindy Romero is the founder and director of the Center for Inclusive Democracy (CID), formerly known as the California Civic Engagement Project, which is part of the USC Sol Price School of Public Policy and is based in Sacramento, California. Romero is a political sociologist and holds a Ph.D. in Sociology from the University of California, Davis. Her research focuses on political behavior and race/ethnicity, and seeks to explain patterns of voting and political underrepresentation, particularly among youth and communities of color in California and the U.S.

Romero has been invited to speak about civic engagement and political rights in numerous venues, testifying before the National Commission on Voting Rights and the California Legislature, among others. Her research has been cited in major news outlets, including The New York Times, Washington Post, Los Angeles Times, Sacramento Bee, Politico and the Huffington Post. She has also been a frequent guest on National Public Radio, Capital Public Radio, and several other NPR-affiliated stations in California. She is a regular op-ed contributor to the Sacramento Bee and CalMatters.

Romero works with a wide array of policymakers, elected officials, voter education groups and community advocates to strengthen political participation and representation. She is currently an adjunct fellow of the Public Policy Institute of California (PPIC) and former member of their Statewide Survey Advisory Committee. Romero is a member of the California Secretary of State's Taskforce on the Voter's Choice Act. She is the former Chair of Mutual Housing California and former Vice-Chair of the Social Services Commission for the City of Davis.

Romero can be reached at msromero@usc.edu



ERICA WALTERS, Partner, CleanSweep Campaign

Erica Walters is a partner at CleanSweep Campaign, a San Francisco-based direct mail, general consulting and online advertising firm serving Democrats and progressive causes nationally.

Walters joined the firm in 1998 and has been a partner since 2003. She specializes in candidate work, ballot measures and independent expenditures. She has participated in over 350 winning campaigns in nearly every state and is proud to have helped win pro-choice, pro-child, pro-worker elections at every level from school board to the presidency.

She managed her first campaign at 19, a state legislative race in Connecticut, but received the bulk of her early political training in Montana working on caucus races, and managed numerous races around the country before moving to San Francisco.

When not working, she enjoys hanging out with her stepsons and husband, cooking, eating, boxing, traveling and running. Actually, she hates running, but does it anyway because she enjoys cooking and eating so much.

THANK YOU to our SPONSORS!



Comprehensive care with a healthy dose of kindness.

At Dignity Health – Sequoia Hospital, you'll always be treated with heartfelt compassion and commitment. From minor emergencies to more serious issues, we are here to support you on your path to wellness. Learn more about our comprehensive services at DignityHealth.org/Sequoia.



Dignity Health®
Sequoia Hospital

THANK YOU to our SPONSORS!

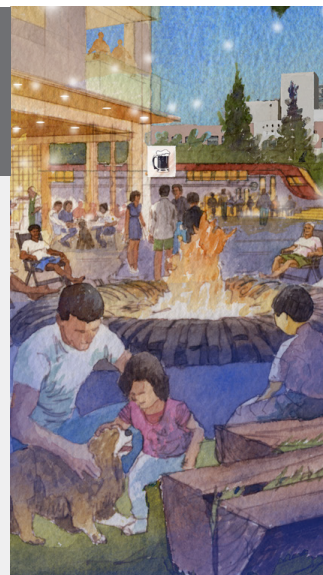
The **SOBRATO** Organization

Building a Strong and Vibrant
Silicon Valley Community
through Business and
Philanthropic Leadership

REIMAGINING SEQUOIA STATION

Lowe and Eden Housing are proud partners on the redevelopment of Sequoia Station, a once-in-a-generation opportunity to:

- Plan and build for the future of regional rail
- Provide over 600 homes, including 40% affordable homes
- Create a vibrant workplace and retail experience for all ages



Learn more about this
transformational project by visiting:
sequoiacentervision.com

LOWE

**EDEN
HOUSING**

THANK YOU to our SPONSORS!



**New Marshall
Medical
Offices
NOW OPEN**

Over 30 departments including Ob/Gyn, Pediatrics, and our Advanced Neuroscience Center have moved into a spacious 4-story medical office building next to our hospital.

New Marshall Medical Offices
905 Maple St., Redwood City



KAISER PERMANENTE®

kp.org/redwoodcity



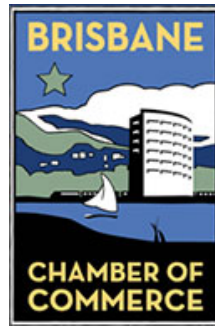
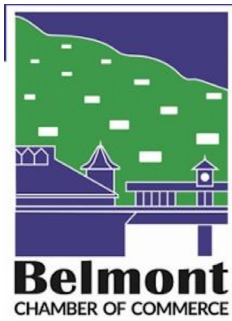
**SIMS
METALS**

A proud member of the Redwood City community
for more than 40 years.

**Helping our community recycle
today for a better tomorrow.**

Visit simsmm.com to learn more about
us and our sustainability efforts.

Thank You to Our Longtime Event Partners



PROGRESS SEMINAR

Thank You Sponsors for Your Continued Support and Belief in the Value of the Progress Seminar

Principal Sponsors



Premier Sponsors



Notebook Sponsor



General Session Sponsors

Name Badge Sponsor



Program Sponsors

Tech Sponsor



Mid-Morning Break Sponsor



Corporate Sponsors

